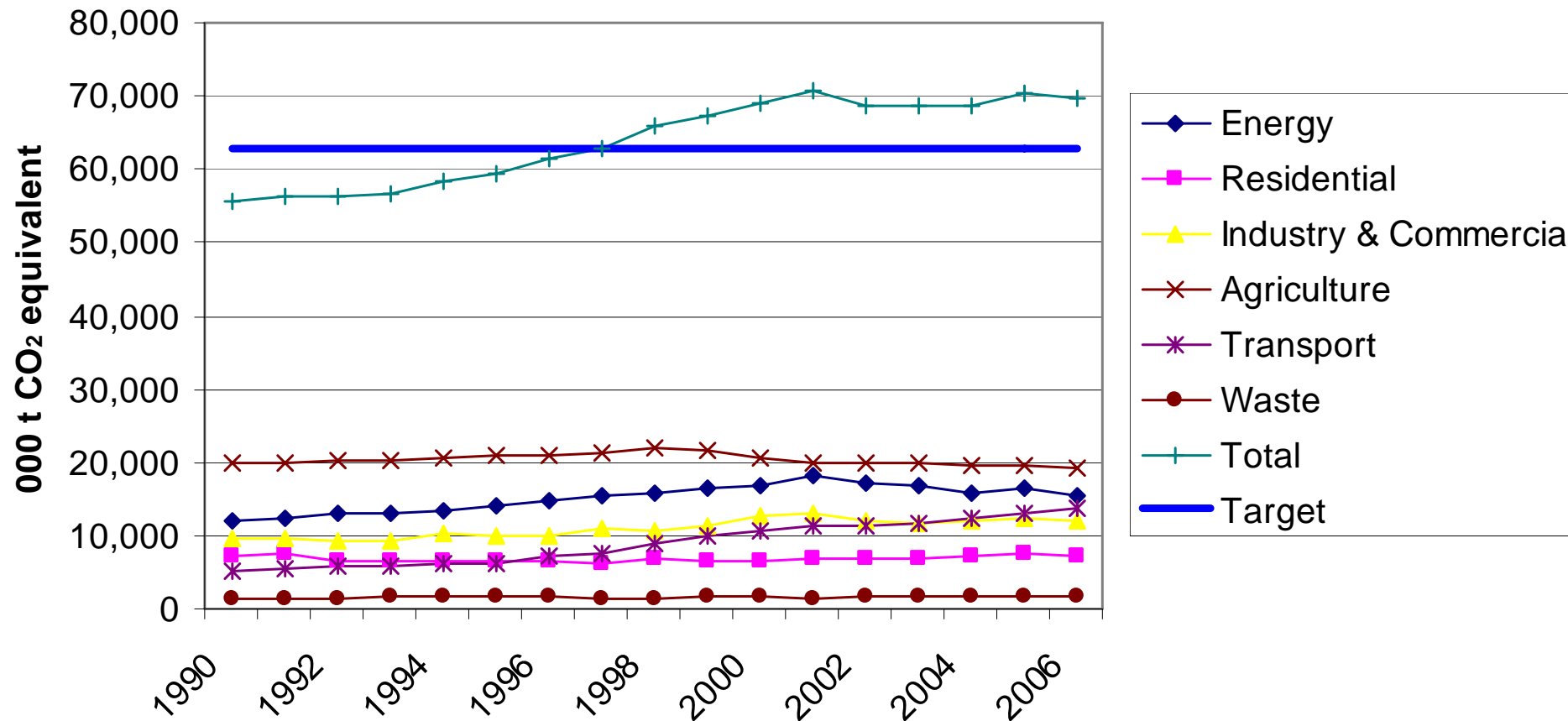


Greenhouse gas emissions - a role for Agriculture



Ireland's GHG story so far



Critical point for climate change issue

- 2007 Spring Council meeting of EU leaders
 - Unilateral reduction in GHG of 20% by 2020 compared to 1990
 - 20% of total energy and 10% of road fuel from renewables by 2020
- January 2008 – EU proposals on burden sharing
- March 2008 Council meeting
 - Leaders reaffirmed commitment to targets and agreed to try and reach agreement on to reach targets by Dec 08.

GHG burden sharing proposals

- Base year:
 - Want a 20% cut on 1990 emissions
 - Emissions had fallen by 6% by 2005
 - 2005 set as new base year, so emissions must fall by 14%
- Emissions traded sector (energy, heavy industry)
 - Must drop by 21%
 - Will be managed at EU level
- Non ETS sector (agriculture, transport, residential, some industry)
 - Must drop by 10% across EU
 - Ireland given a higher target of -20% because of high GDP
 - Carbon credits limited to 3% of non ETS sector (will relax this)

What the target means for Ireland

- Non ETS sector produced 48.3 m tonne CO₂ in 2005, so must drop by 9.7 m tonne to 38.7m tonne

What will emissions look like in 2020 according to NCCS

	2020 – NCCS baseline
Energy (non-ETS)	2.12
Transport	13.64
Residential	6.66
Ind/Com/Services (non-ETS)	9.09
Agriculture	17.05
Waste	0.85
Sub-total	49.41
Sequestration	-4.65
Net total (minus sequestration)	44.76
Distance to 2020 target of 38.665 mt	6.1

What will emissions look like in 2020 according to NCCS

	2020 – NCCS baseline
Energy (non-ETS)	2.12
Transport	13.64 (actual out-turn in 2005 = 13.0)
Residential	6.66
Ind/Com/Services (non-ETS)	9.09
Agriculture	17.05 (actual out-turn in 2005 = 19.6)
Waste	0.85
Sub-total	49.41
Sequestration	-4.65
Net total (minus sequestration)	44.76
Distance to 2020 target of 38.7 mt	6.1

Key questions

- How is agriculture likely to develop over the next 10-15 years?
- What share (if any) of the burden should agriculture bear?
- What reductions can agriculture deliver?
- What role for forestry and renewable energy crops?
- What are research and technology transfer priorities for agricultural emissions?