



Animal Health Ireland

Teagasc / ICOS Dairy Expansion Seminar

*Animal health and milk quality:
challenges and opportunities*

Joe O'Flaherty (CEO)

23/01/15

CellCheck



CellCheck

AnimalHealthIreland.ie



Programme objective

Programme Objective:

Enable the dairy industry to maintain a national average bulk milk somatic cell count of 200,000 cells/mL or less by 2020

Economics of SCC control

SCC cells/ml	<100,000 cells/ml	100,001-200,000 cells/ml	200,001-300,000 cells/ml	300,001-400,000 cells/ml	>400,000 cells/ml
Net farm profit, €	31,252	26,771	19,661	16,936	11,748

Table 4: The inverse relationship between net farm profit and SCC

Economics of SCC control

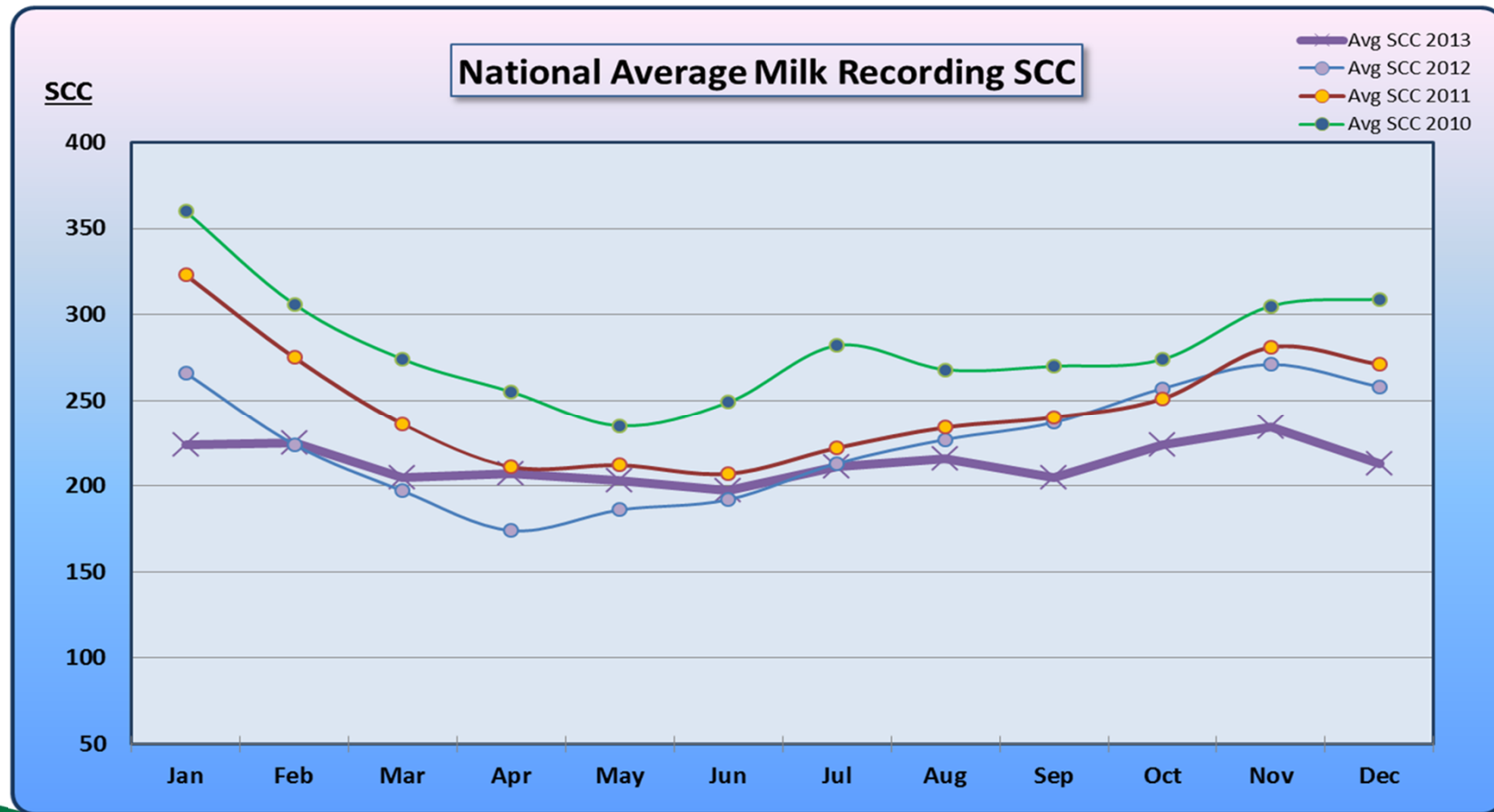
Producers and processors

A reduction from $>400,000$ to $<100,000$ cells/mL, \rightarrow

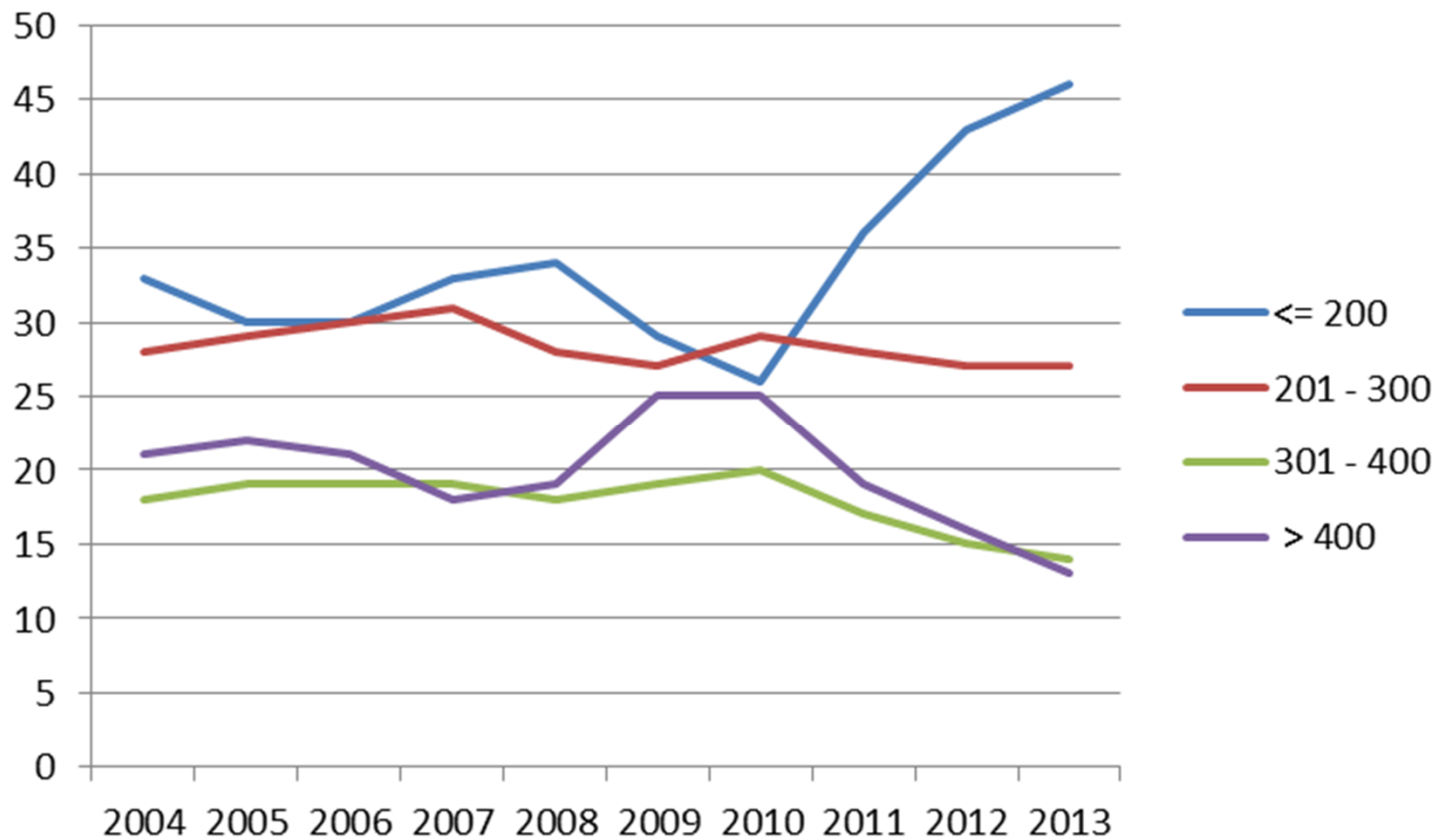
Increase in overall returns to the farm of 4.8 c/L (farm and processor)

A 10% reduction in national cell count \rightarrow €37.6 million savings for the Irish dairy industry

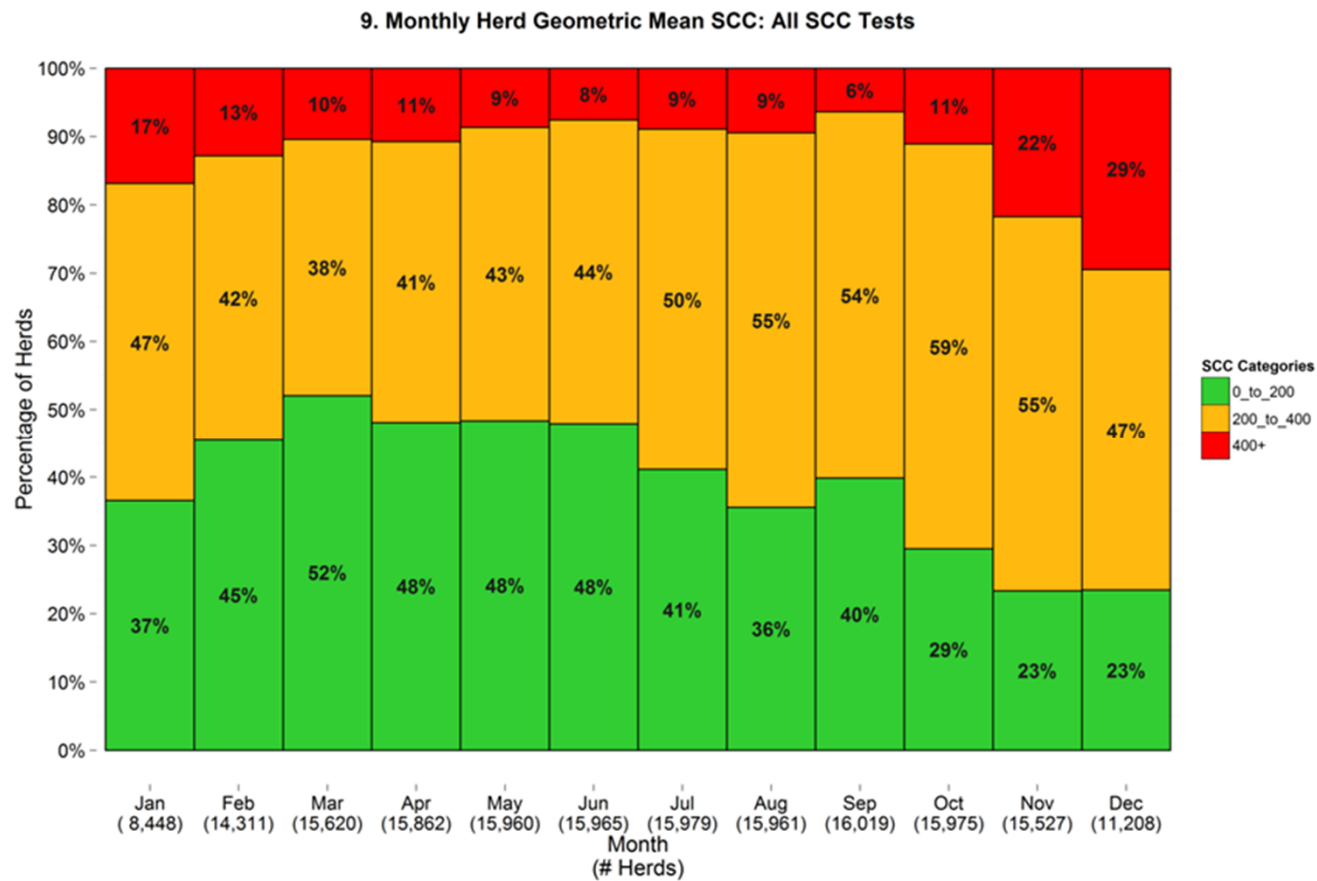
SCC performance of milk-recorded herds



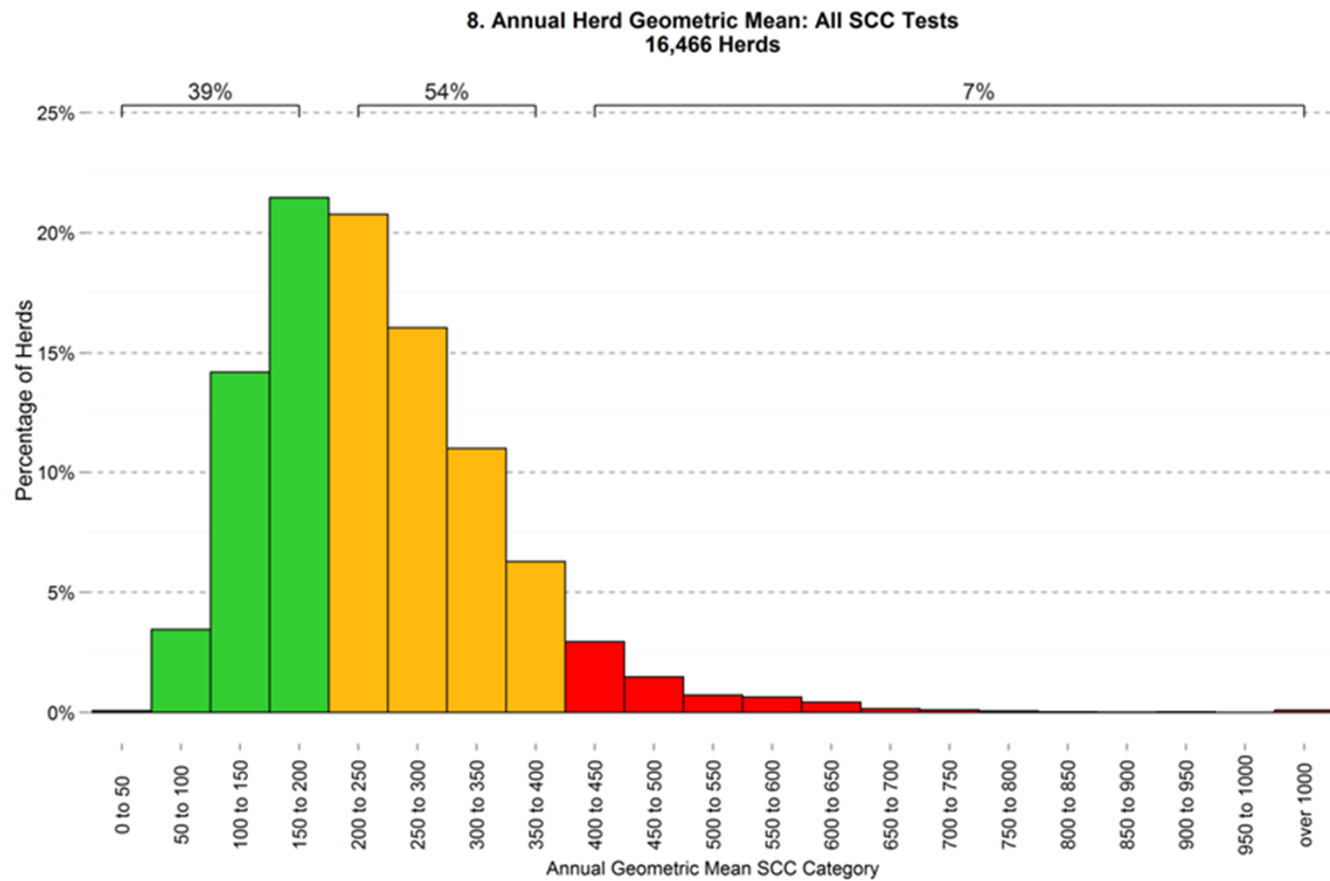
SCC performance of milk-recorded herds



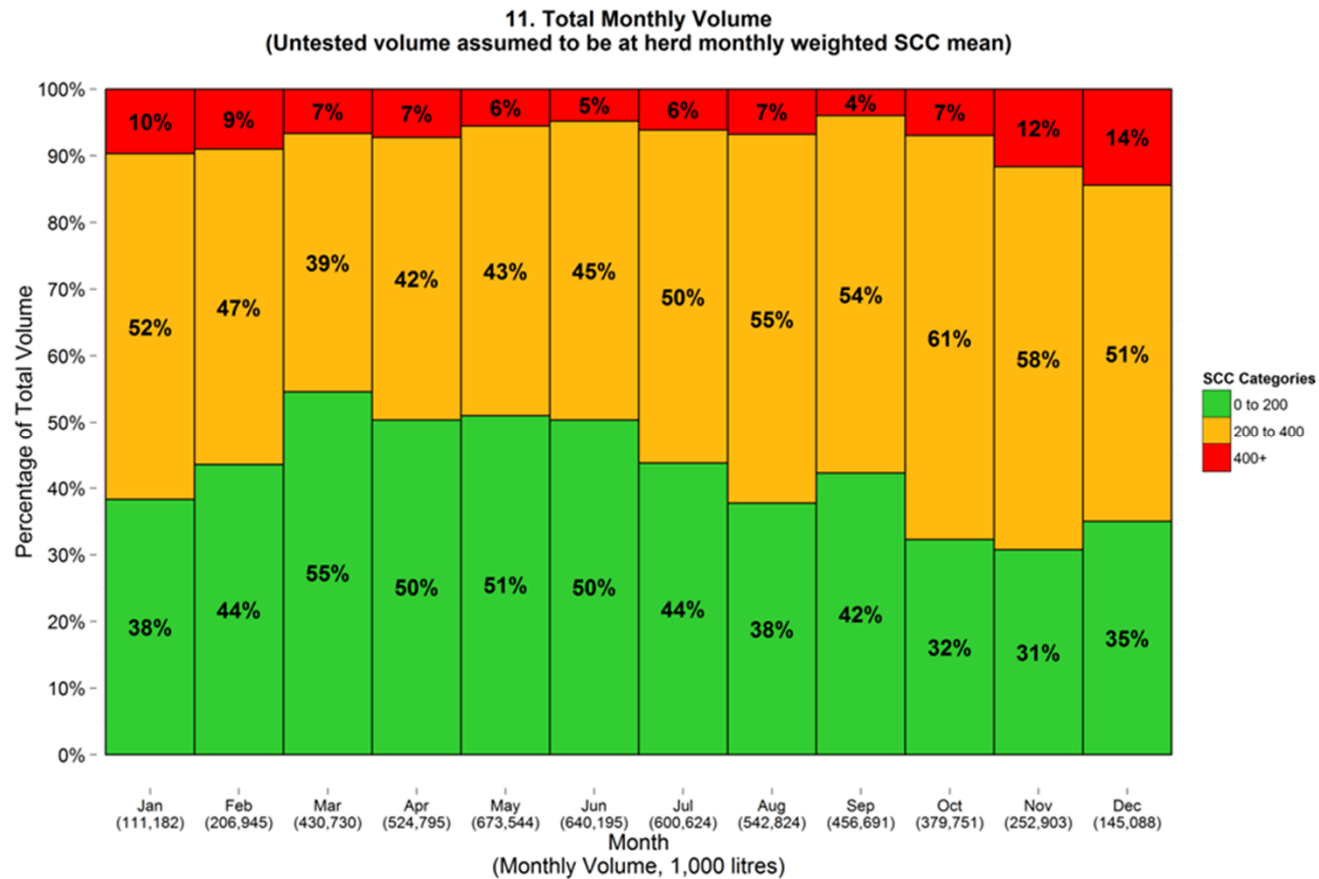
National SCC database (2013) HERDS



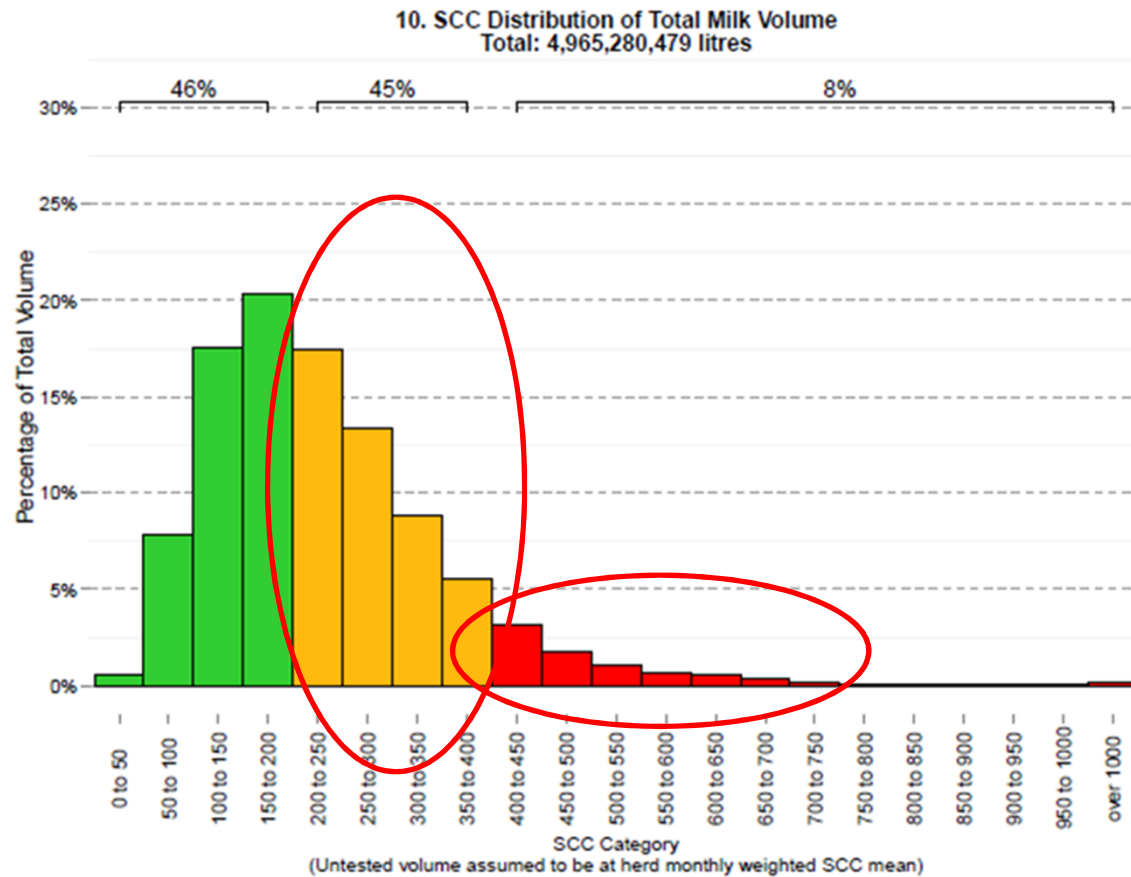
National SCC database (2013) HERDS



National SCC database (2013) VOLUME



National SCC database (2013) VOLUME



Johne's disease



Clinical effects

Depressed milk production

Increased cull rates

Increased susceptibility to
other diseases

Diarrhoea & weight loss



International perspectives

Global constraint on livestock production

Eradication is NOT feasible for any
endemically infected country/region

Control IS feasible at least at the individual
farm level

Overall programme objective

Programme Objective:

To establish a voluntary national programme for Johne's disease that enables participating herd owners to:

Have increasing confidence in the absence of infection in their herds; and

To achieve significant control or elimination where present.

Pilot programme components

~ 400 vets trained

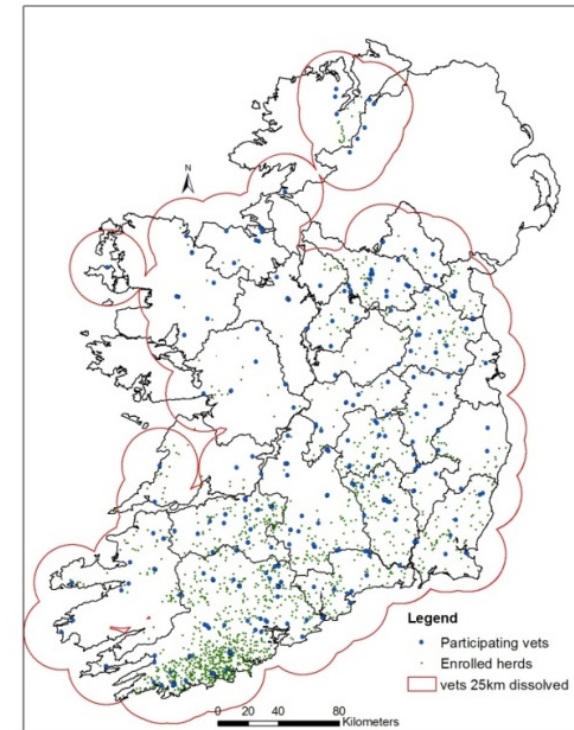
~ 1,800 herds enrolled

9 processors participating

Cost sharing

Significant research

Major review in 2015



Pilot programme components

Enrolment

On-farm risk assessment

Annual individual animal testing

Blood (1 sample)

Milk (2 samples)

Data sharing with ICBF database

Disposal of positive animals

On-farm risk assessment

