

## How and why do we measure calf behaviour?

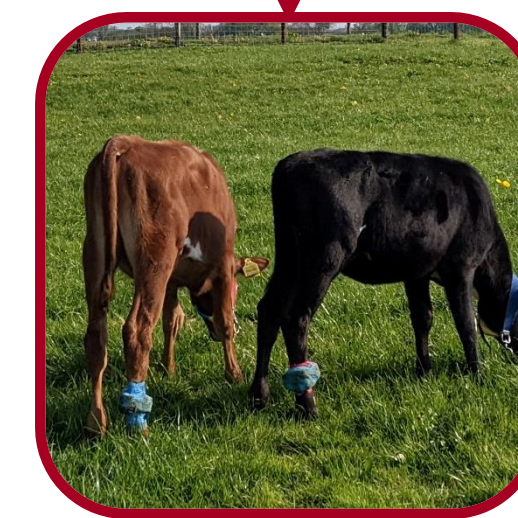
- Behaviour of animals is used to monitor their health and welfare
- Instead of observing animals for short time periods accelerometers allow continuous measurement of behaviour
- Deviation from normal behaviour can indicate compromised welfare

### Examples of accelerometers

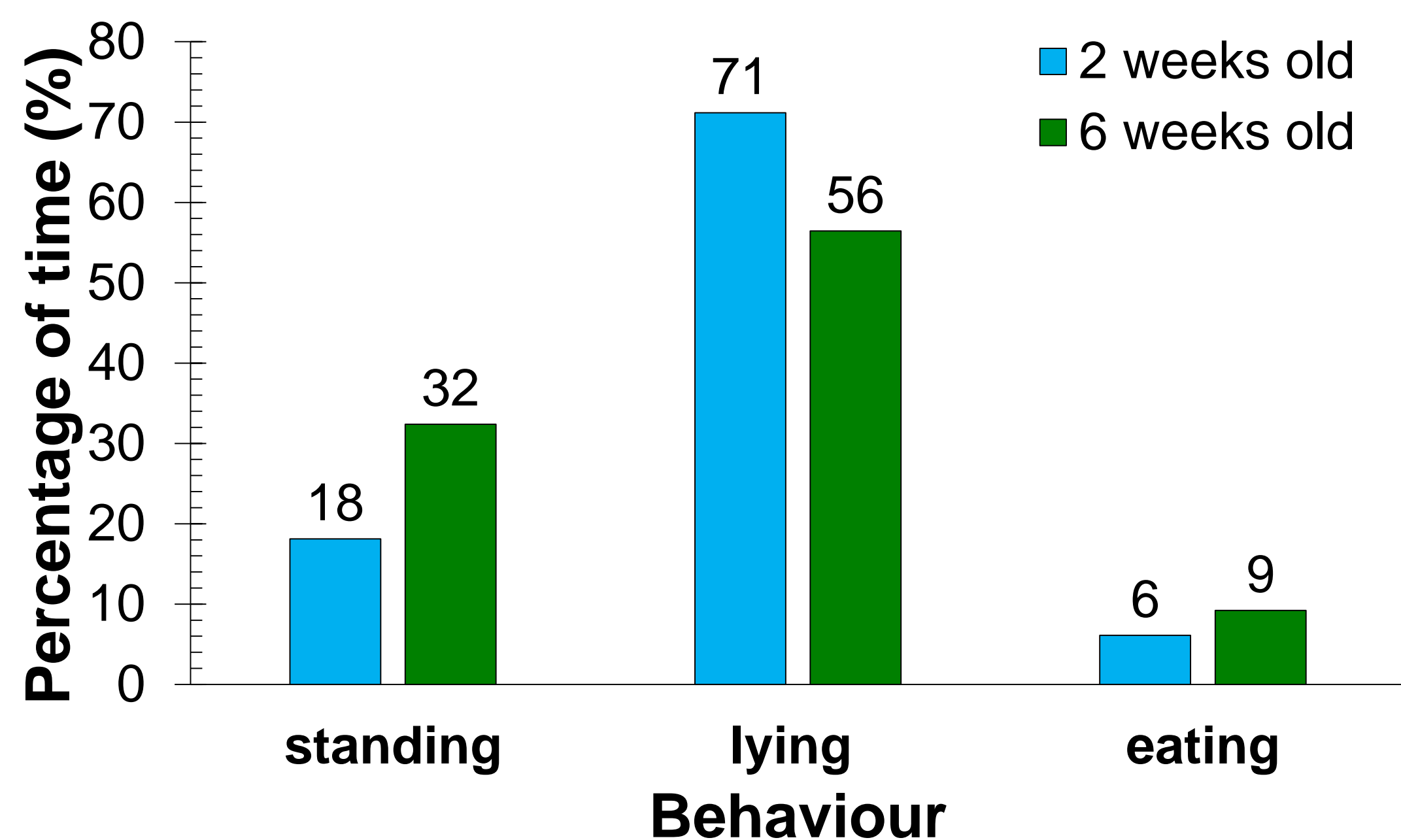
Axivity  
AX3



IceRobotics  
Icetag



## What has measuring calf behaviour shown us?



- Calves get more active as they grow
- Calves start ruminating & eating more forage from 2 - 3 weeks of age