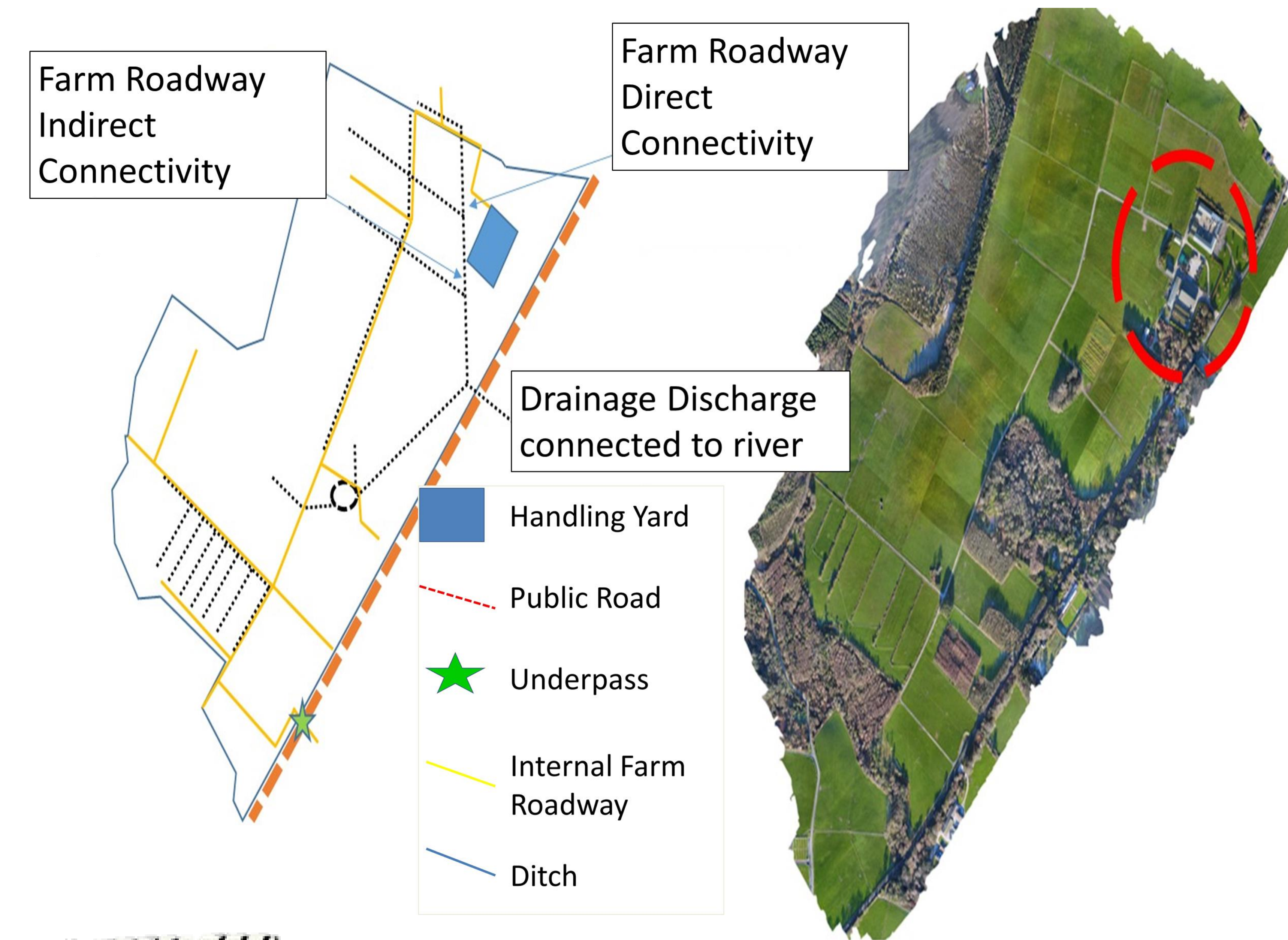


## Map roadway & ditches on farm



## Timing

- Visually note where connections to waters occurs all year round

## Background

- Since 1<sup>st</sup> Jan 2021 roadway runoff within farms is not permitted to enter waters
- Internal farm roadways and ditches can be pathways for mobilised nutrient and sediment loss to waters.
- Need to find these “pinch points” and manage them.

## Take home messages

- ✓ Open drains need to be ranked in terms of their connectivity risk for N & P loss to waters
- ✓ Open drains are highest ranked risk connected to the farmyard and roadway runoff (100 m around farmyard)
- ✓ Roadway runoff is rich in nutrients and sediment & connectivity with waters must be prevented all year round
- ✓ Need right measure in the right place