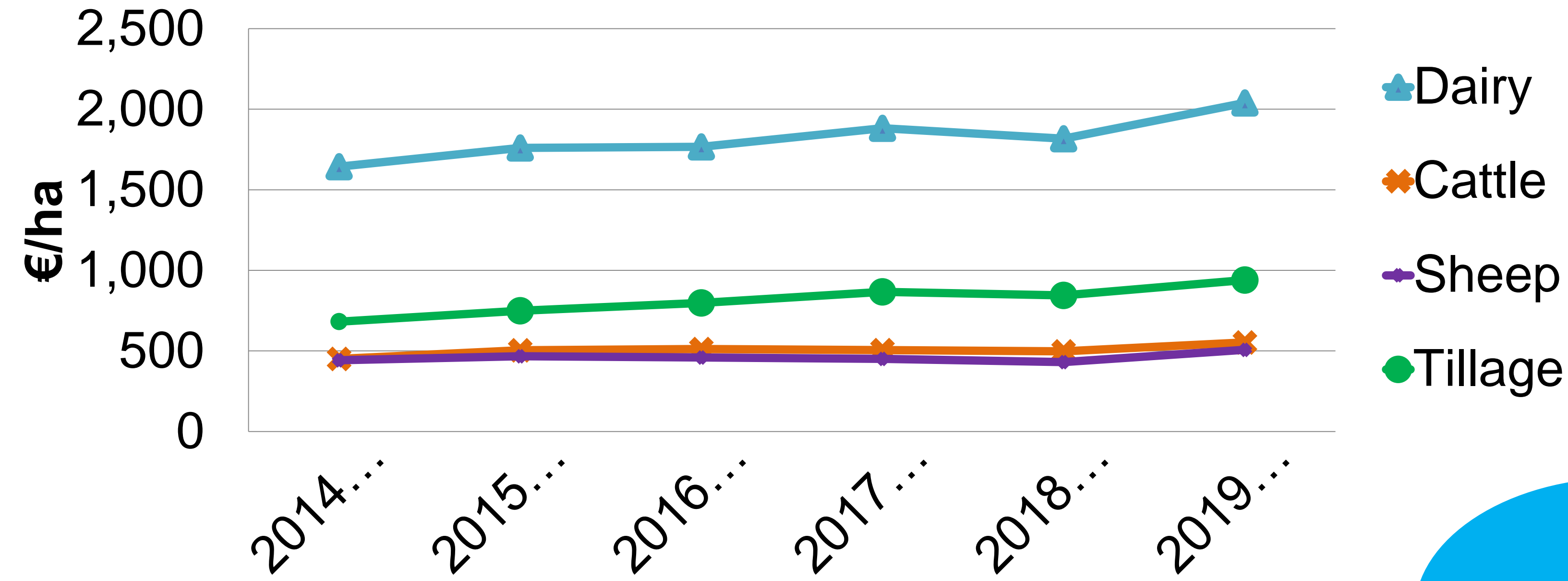
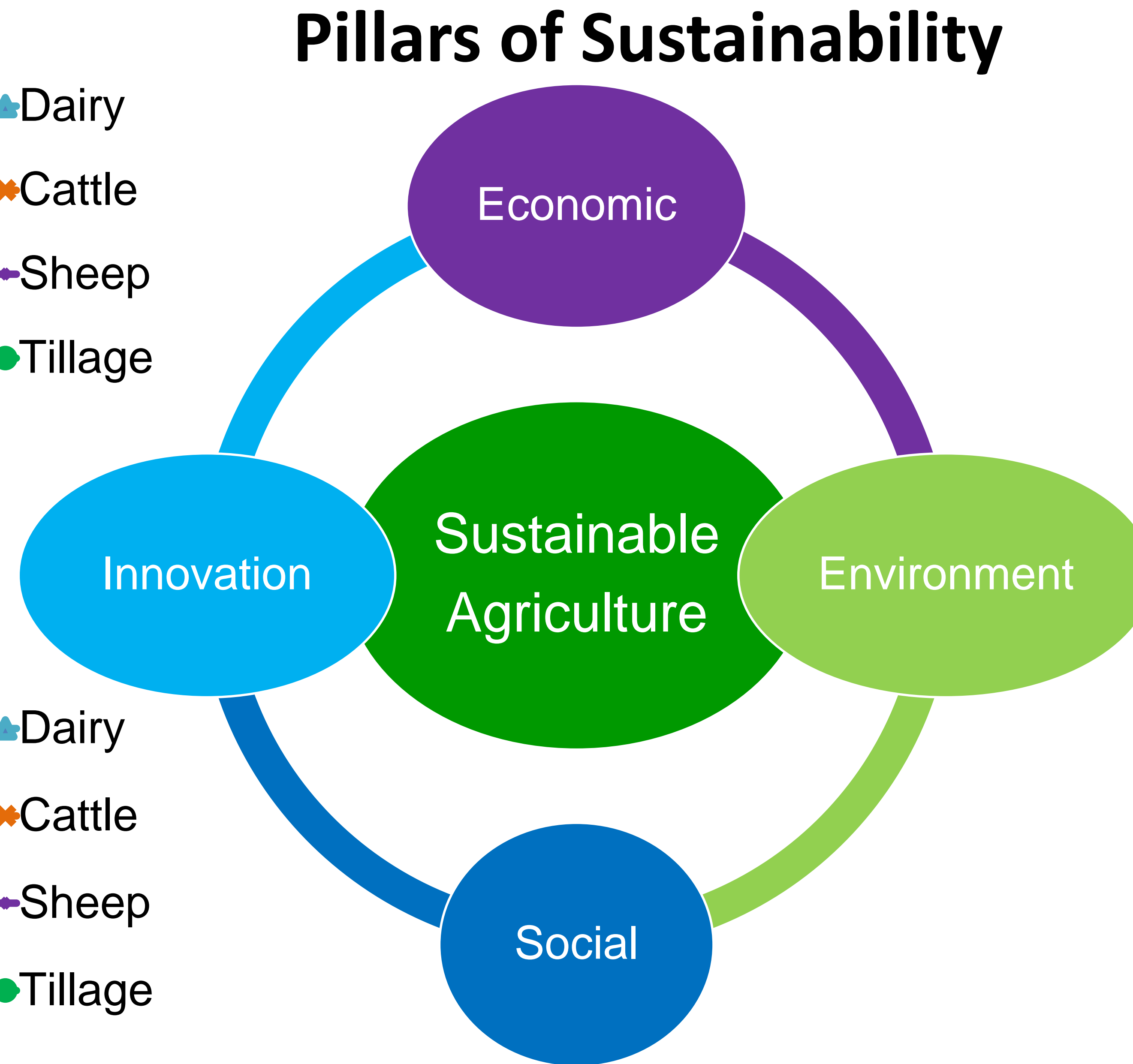
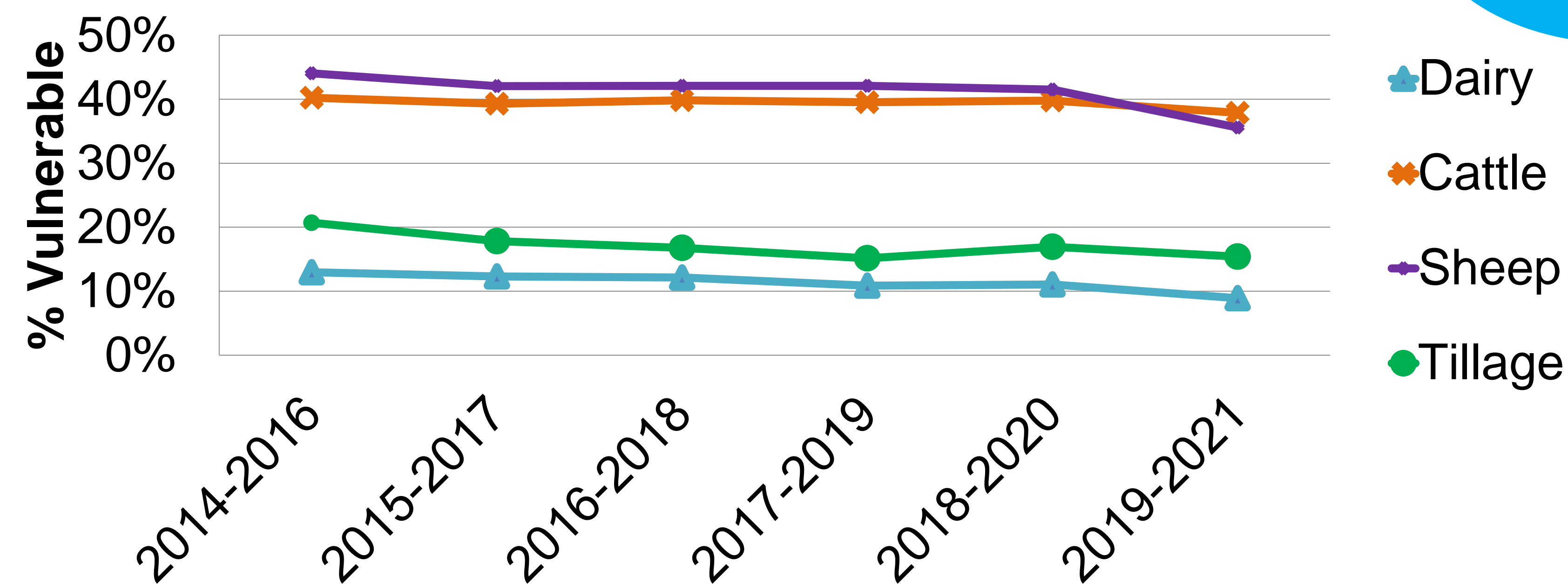


Sustainability indicators – Irish farm systems

Gross margin/ha - 3 year rolling average



Household vulnerability - 3 year average

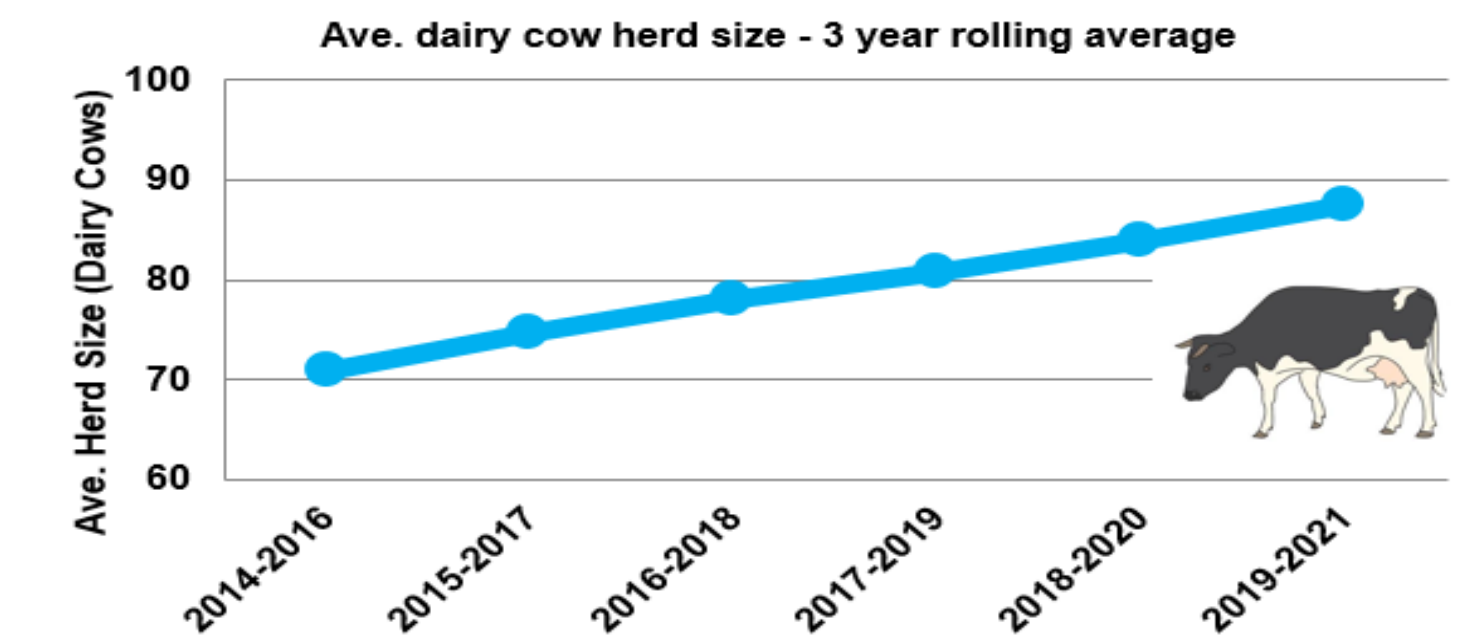
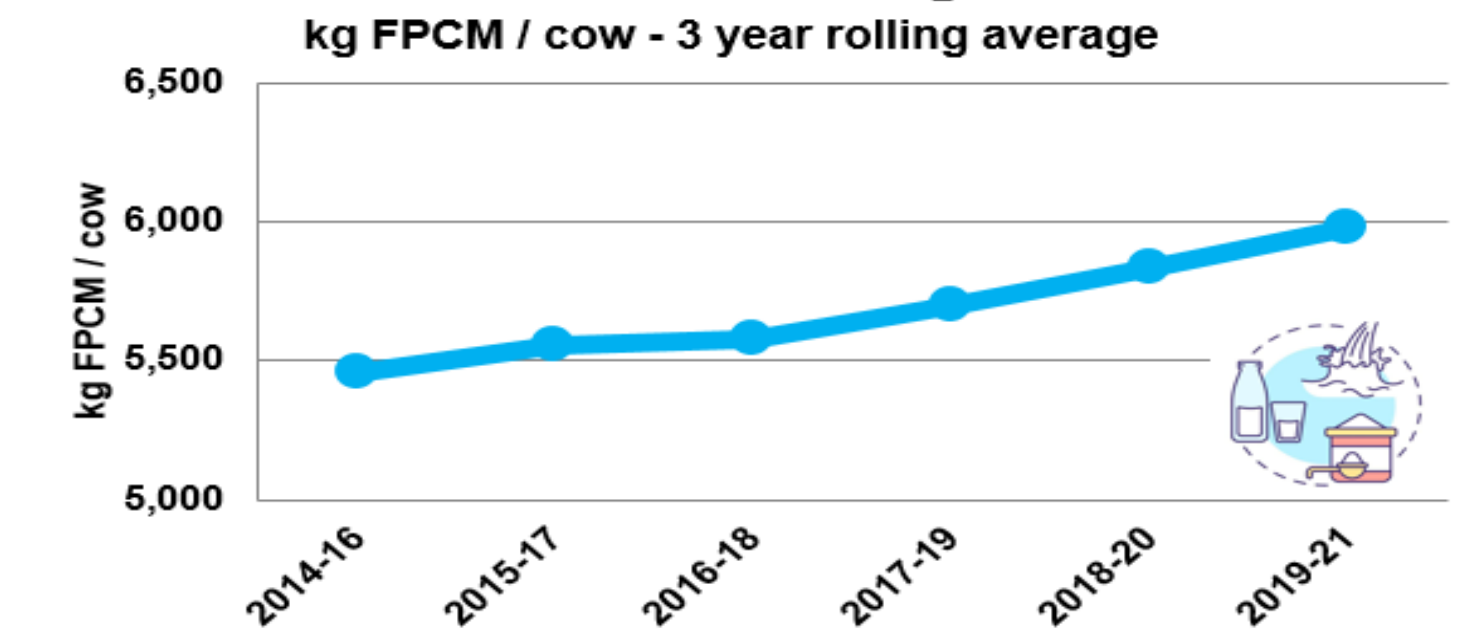
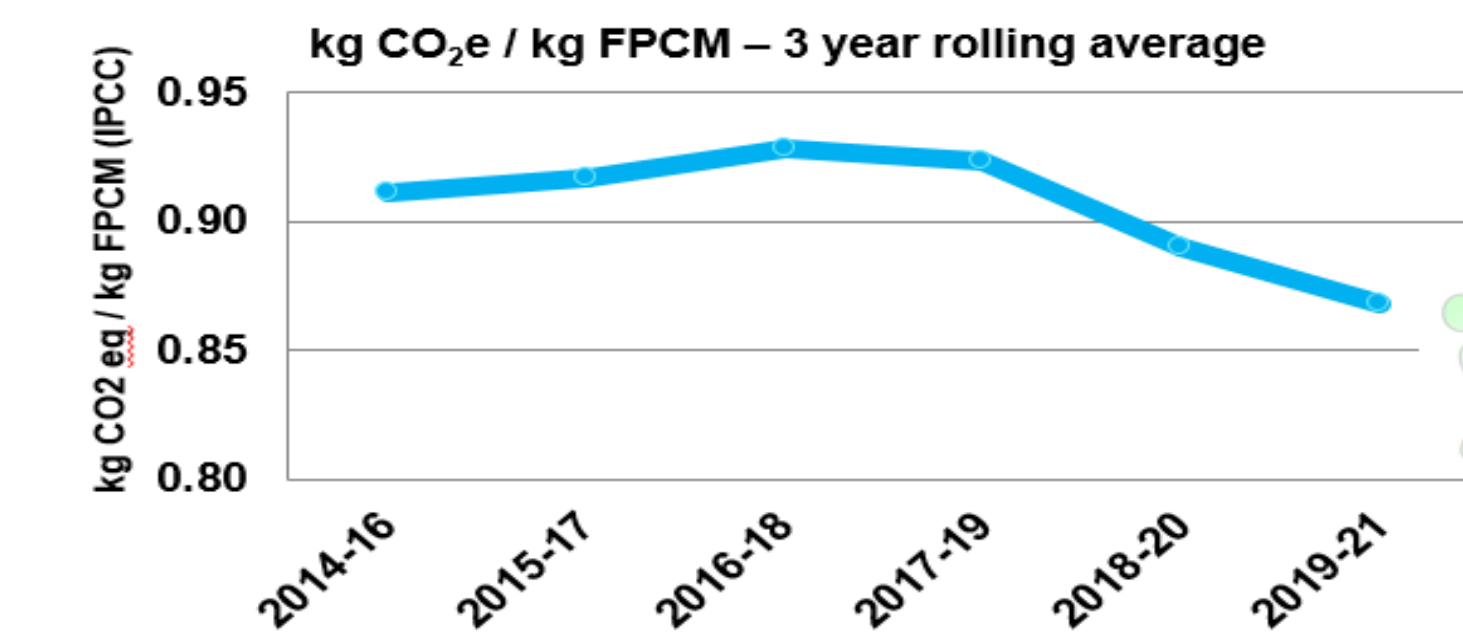


Dairy based Ag. GHG emissions - Components

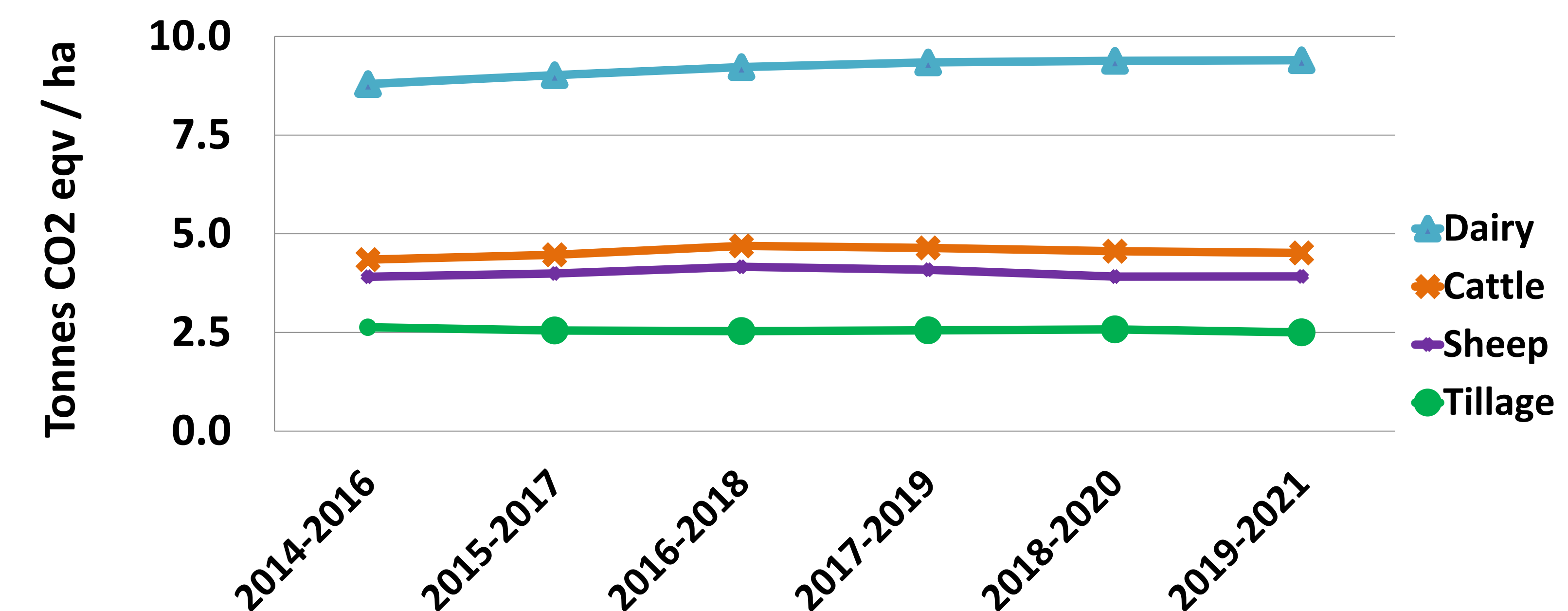
Dairy absolute GHG emissions equation = 3 Components

- (1) kg of milk produced per cow *
- (2) CO₂e per kg of milk *
- (3) No. of cows (Herd size)

*Kg of Fat & Protein Corrected Milk (FPCM) milk, Standardized to 4% fat and 3.3% protein.



Ag. based Co2eq ha - 3 year rolling average



Key messages

- Profitability of dairying is higher & growing faster than all other farm systems
- Household vulnerability is consistently lower across dairy farms
- Dairy farm GHG absolute emissions are higher & growing faster than other farm systems