

The background features a series of concentric circles in light gray, some solid and some dashed, creating a sense of depth and movement. A large, solid green oval is positioned in the center, serving as a backdrop for the title text. A dark gray, curved shape is visible on the left side, partially overlapping the green oval.

Our Once a Day Journey

By Liam and Catherine Millerick

Items to discuss



Making the decision
to go OAD.



Current performance
and challenges along
the way



Key to our success at
OAD

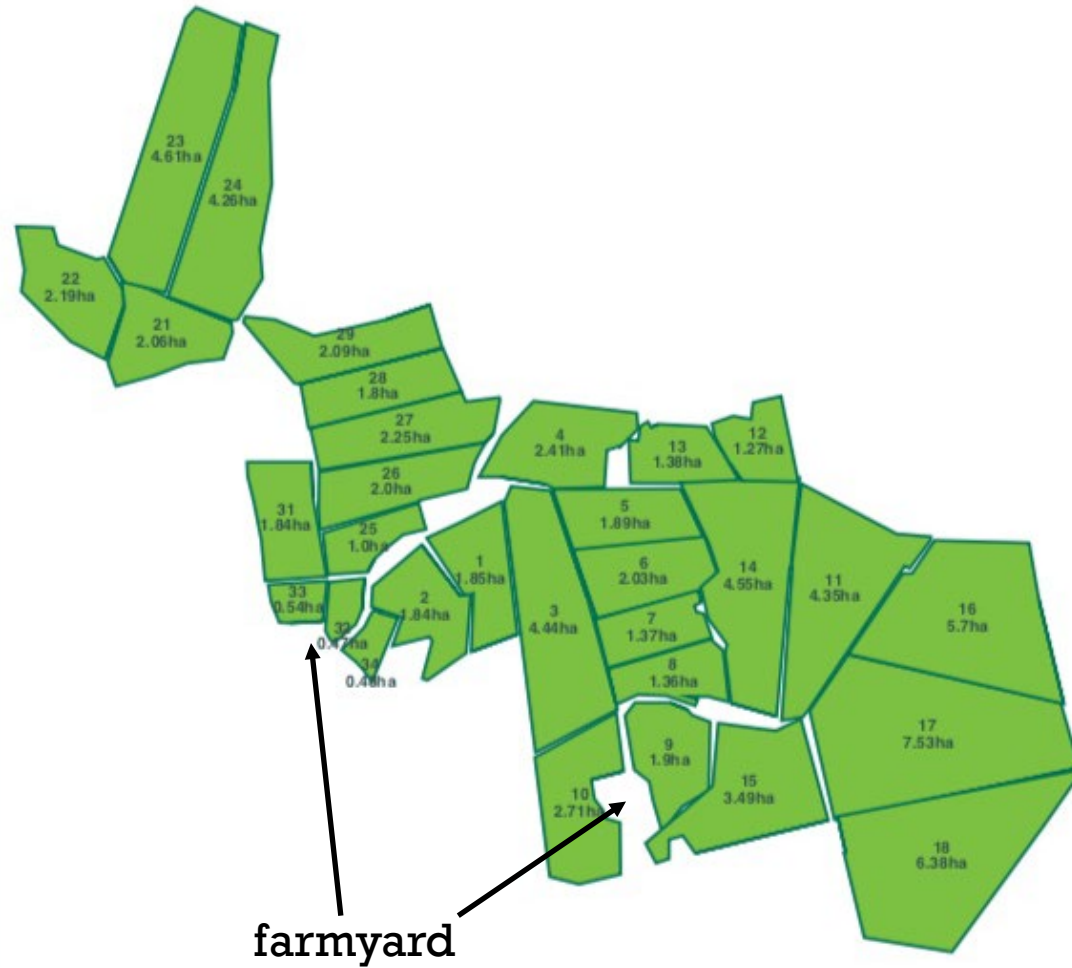


Is it as profitable as
twice a day (TAD) ???



Future plans for our
herd

Overview



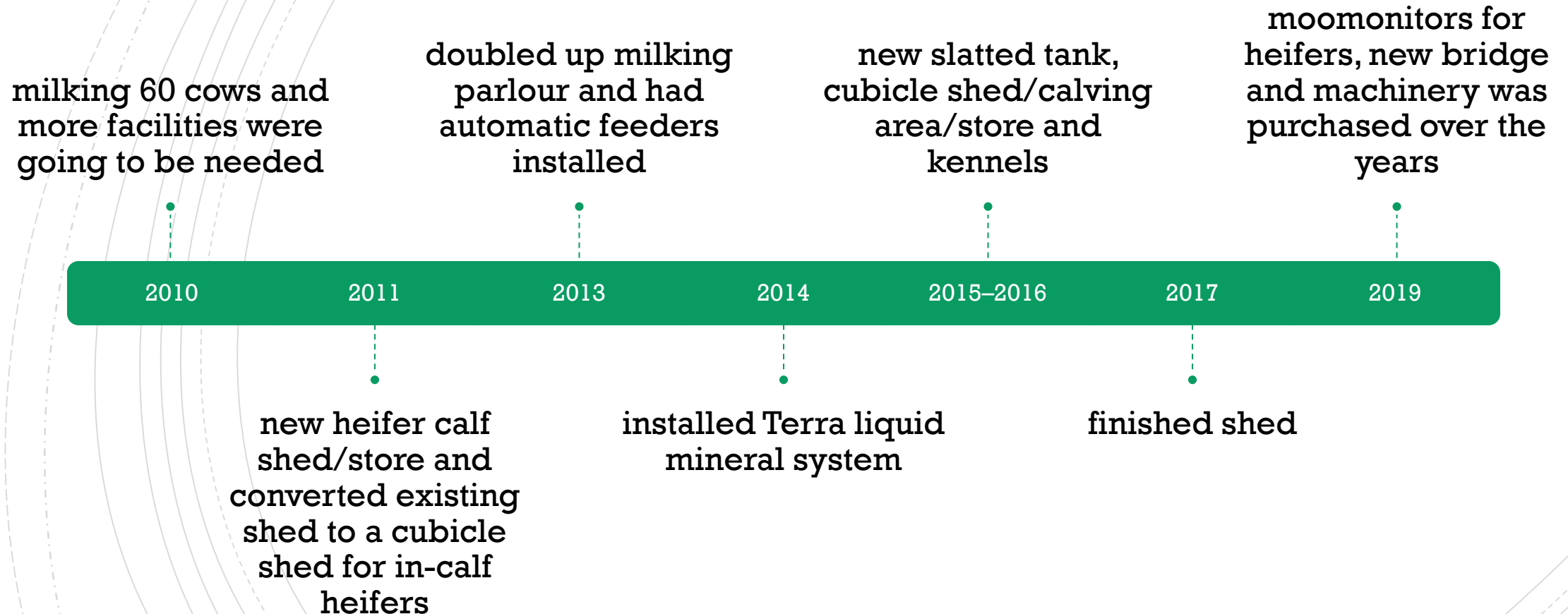
- Milking 124 jersey crossbred cows once a day (OAD) near Fethard Co. Tipperary.
- Closed herd since 2006 until we purchased 11 yearling heifers, 2 months ago.
- 2012 – milking 69 cows twice a day (TAD) and sold 394 kgMS/cow.
- 2019 – 124 cows OAD and sold 415 kgMS/cow on 230 kg of meal and a herd EBI of 180.



Why Once a day?

- Could one make as much profit from milking OAD as TAD?
- The lifestyle benefits of going OAD
- Jersey crossbred cows work best on OAD
- Excellent mentors
- 1st September 2013 – started our OAD journey
- 2014 – was the first full season of OAD with 96 cows

Preparation for OAD





The first 6 years

- Our first year wasn't as bad as expected despite 40% heifers due to good milk price
- We now only have 3 groups of stock on the farm
- Exceptional fertility in our first year with only 2% empty but as output increased over the years so has our empty rate
- Culled about 15%.



Challenges along the way

- 2014 – stray current and SCC issues
- 2015 – Mycoplasma Bovis outbreak
- 2016 – poor milk price
- 2017 – unknown virus in the cows
- 2018 – drought
- 2019 – weak milk price and for the first time finding buyers for the bull calves was a problem.

Co-op performance report summary

	TAD 2012	TAD/OAD 2013	OAD 2014	OAD 2015	OAD 2016	OAD 2017	OAD 2018	OAD 2019
F + P (kg)	394	379	277	331	371	378	417	415
Fat (%)	4.49	4.67	5.03	5.11	5.22	5.35	5.38	5.36
Protein (%)	3.49	3.55	3.83	3.96	3.97	3.94	3.98	4.03
SCC (000's)	91	153	227	182	195	104	120	133
Average price (c/L)	34.8	43.2	45.7	36.5	32.3	44.9	43	40.5
Cow numbers	76	85	97	107	110	116	121	123
Calving interval	359	374	370	365	363	373	364	363

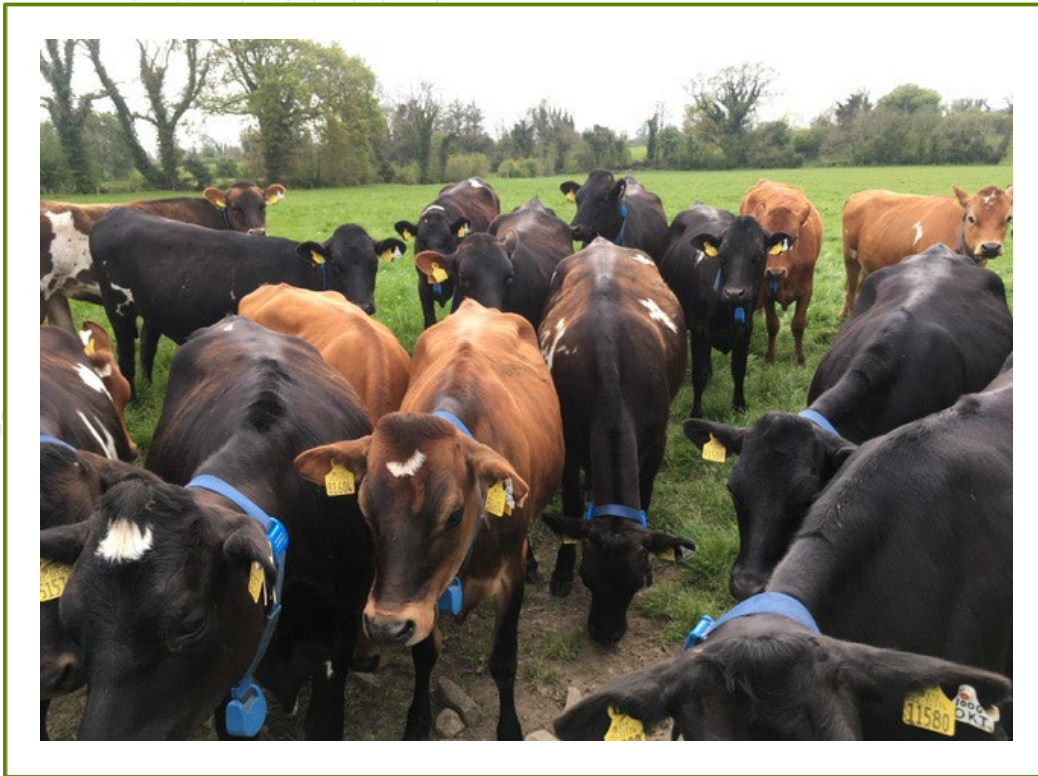
Top cows

bottom cows

The
suit
a r
c

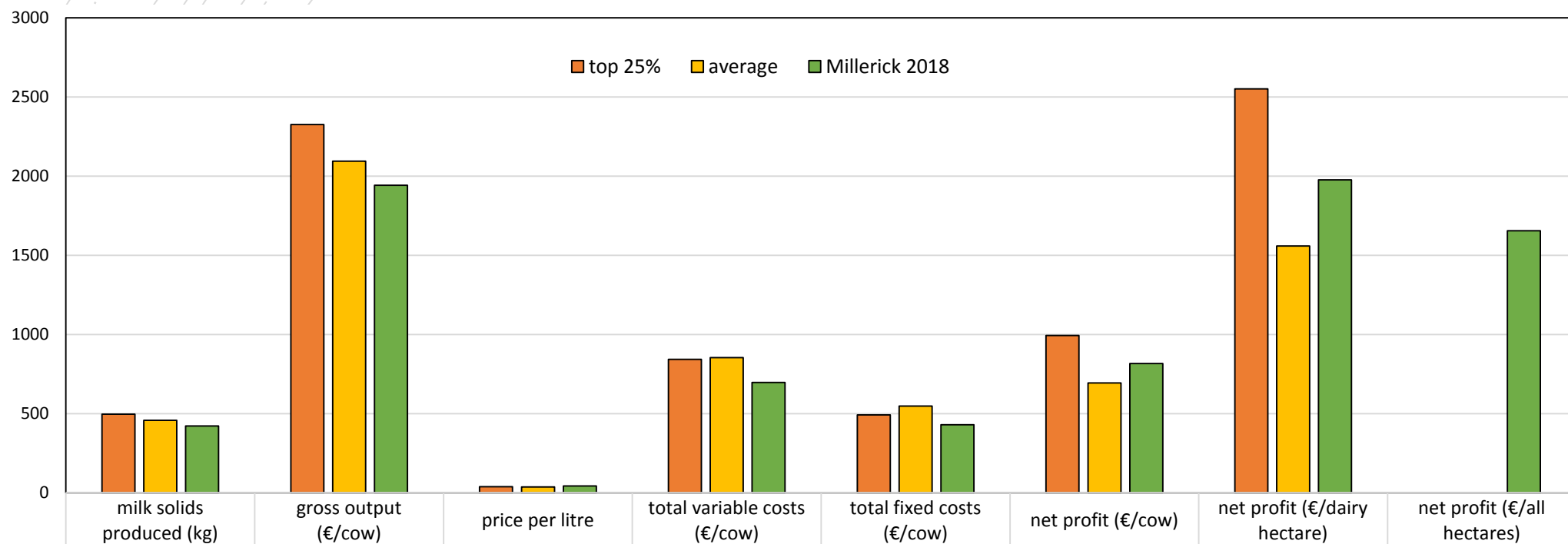
Animal Details					Details & EBI Indexes									
Jumbo Tag Name DOB Breed EBI Rank In Herd Status Due Calve	861 IE341072210861 25-Feb-12 6y 10m JE 50% FR 37.5% 21 Born In herd Dry 06-MAR-19 AYD ExpEBI €221				Sire HWY (€158) Dam IE341072290530 (530) (€160) Dam's Sire TIH									
					EBI Milk Fert Calv Beef Maint Mgmt Health									
					€201 €111 €38 €29 -€39 €58 €5 -€1									
					Milk Kg Fat Kg Prot Kg Fat % Prot % Calv. Int. Survival									
					120 27.2 11.1 0.36 0.11 -2.5 days 0.6%									
Calving & Fertility					Milk Production									
Lact	Calved	Calf Jumbo	Sex	On Farm	Num Serve	Calv Int	Milk kg	Fat kg	Prot kg	Fat %	Prot %	F+P kg	SCC	DayL
1	13-Feb-14	0985	M	N	2		3533	189	140	5.36	3.96	329	216	2681
2	20-Feb-15	1207	F	Y	1	372	5367	296	213	5.51	3.97	509	87	2812
3	22-Feb-16	1324	F	Y	1	367	5244	300	213	5.72	4.06	513	74	2833
4	23-Feb-17	1386	M	N	1	367	5751	335	230	5.83	4	565	144	2834
5	02-Feb-18	1560	F	Y	2	344	6358	370	270	5.82	4.25	641	64	3065
Avg (Comp)						363	5251	298	213	5.65	4.05	511	17	285
Lifetime Production							26253	1490	1066	5.68	4.06	2557		142

Breeding



- Was 10 weeks but from now on will be 15 weeks
- Going forward sexed semen could play a role
- Consistently achieving 90% or higher calved in 6 weeks
- More emphasis put on the milk sub index than fertility
- Our 2019 bull selection
 - Dairy: Je5061, Je4516, Je4827, Je4509 (sexed), Je4289, Je2438, FR2050, FR4507, ZSP
 - Beef: SPL, KYA, WA2409, SI2469, CH2218, CH2000
- Our plan is to use Holstein Friesian bulls on mostly Jersey cows and jersey bulls on mostly Holstein Friesian cows.
- Dairymaster Moomonitor collars were purchased.

2018 Profit Monitor Data



top 25%	496	2326	38.07	842	491	993	2551	
average	458	2094	36.68	854	547	693	1559	
Millerick 2018	422	1942	43.4	696	430	816	1976	1655

Millerick 2019	427	1804	40.5	501	425	902	2267	1746
----------------	-----	------	------	-----	-----	-----	------	------



Grass

- Grass is measured every 10 days or every 5 days at peak
- We record our figures on pasture-base
 - In 2018 we grew 8.2 ton
 - In 2019 we grew 11.5 ton
- At the moment all machinery work is done by ourselves except baling and wrapping.
- In 2019 we spread 77 kg N/Ha or 62 units N/acre over eligible ground

A typical day outside of calving and breeding

Up at 6am

Out to the farm at 6:30am

Liam goes for the cows and fixes wires/paddocks

I start milking at 6:45am ish

Liam comes back to the parlour and one of us will go see the heifers and calves

One of us washes out the parlour and the other scrapes the yard and locks the cows into their paddock

We are back at the house by 9 or 9:30 for more tea

Our farming day is done and we can plan the rest of the day.

Our future plans



**Keep well on
top of soil
fertility**



**Always be
mindful of the
environment**



**Hold present
cow numbers
and reduce
wastage while
letting herd to
mature.**



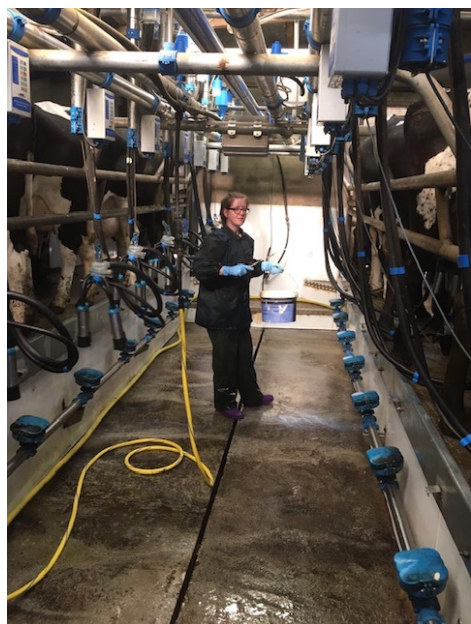
**Reduce
replacement
rate.**



**Increase dairy
heifers born out
of our top
cows/heifers.**



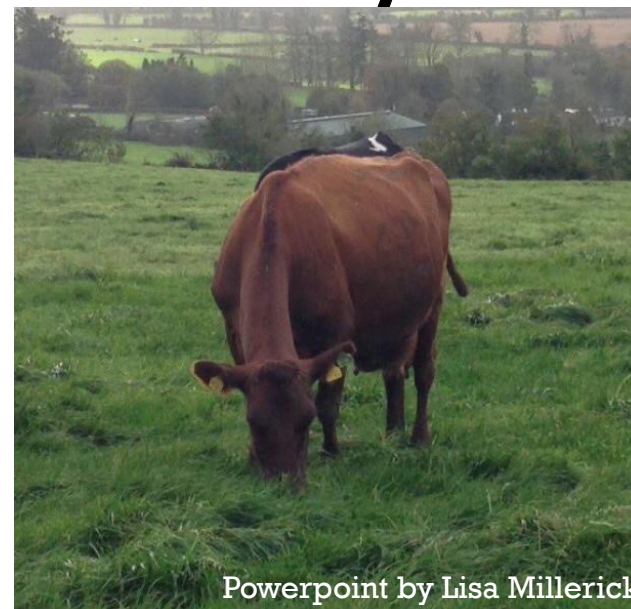
**Have a
successor but
not a working
one yet.**



OAD is not for everyone... but it is an option.



Thank you



Powerpoint by Lisa Millerick

