

Declan & Louise White

Managing a large OAD herd



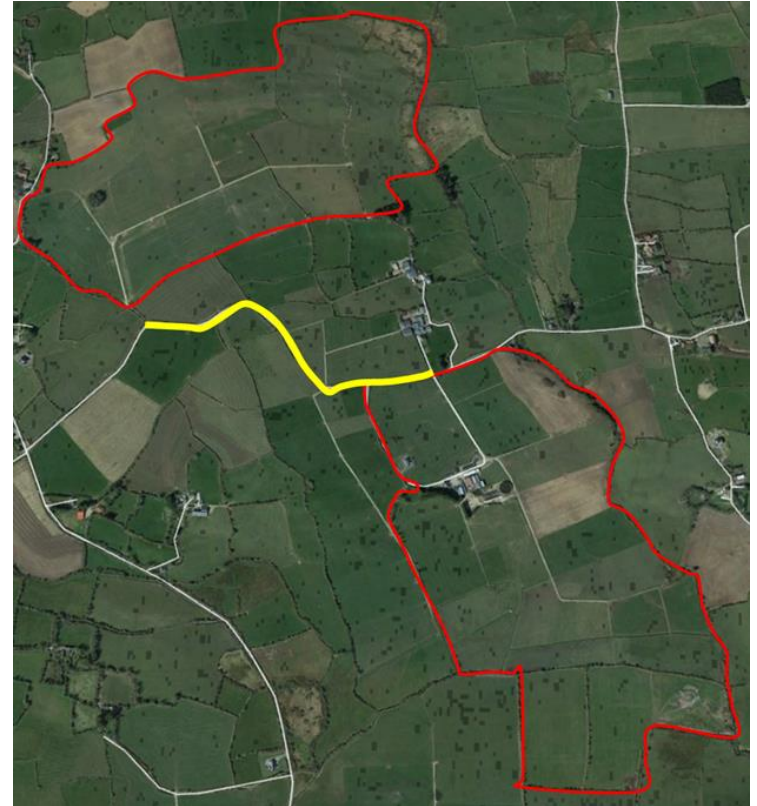
Who are we?

- Family Farm
- 4 children (11 to 17 years old)
- Denis – fulltime worker (1/2 labour unit)
- 100% crossbred herd

Animal Group	Num of Cows	Milk Kg Fat % Prot %	Surv% CI Days	Milk % Cont	Fertility % Cont	Calv % Cont	Beef % Cont	Maint % Cont	Mgmt % Cont	Health % Cont	EBI €
Cows with EBI	201	-79		€ 58	€ 45	€ 34	€ -31	€ 38	€ 4	€ -1	€ 149
Missing EBI*	6	10.2 0.22	1.5	27.4%	21.4%	16.1%	-14.5%	18%	2.1%	-0.5%	
Total Cows	207	5.1 0.13	-2.1								

Who are we?

- 117 ha
 - 85 ha MP
 - 2 silage blocks (within 1.5 miles)
 - 7 ha beet (grazed in situ)
- Planned Stock 2019
 - 250 cows
 - 60 replacement heifers
 - 100 heifer calves for summer

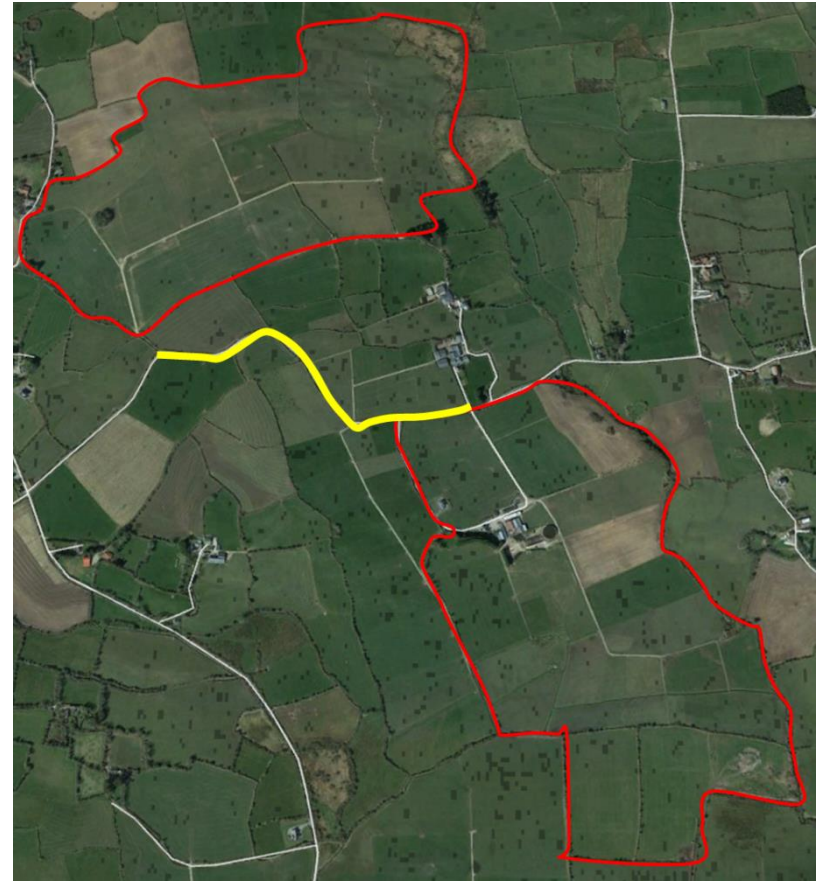


Why OAD?

SUPERLEVY

Why continue OAD?

- Allows use of outside 40ha block as part of MP
- Facilitates low labour costs
- Frees up time to manage and plan our work
- Better work – life balance



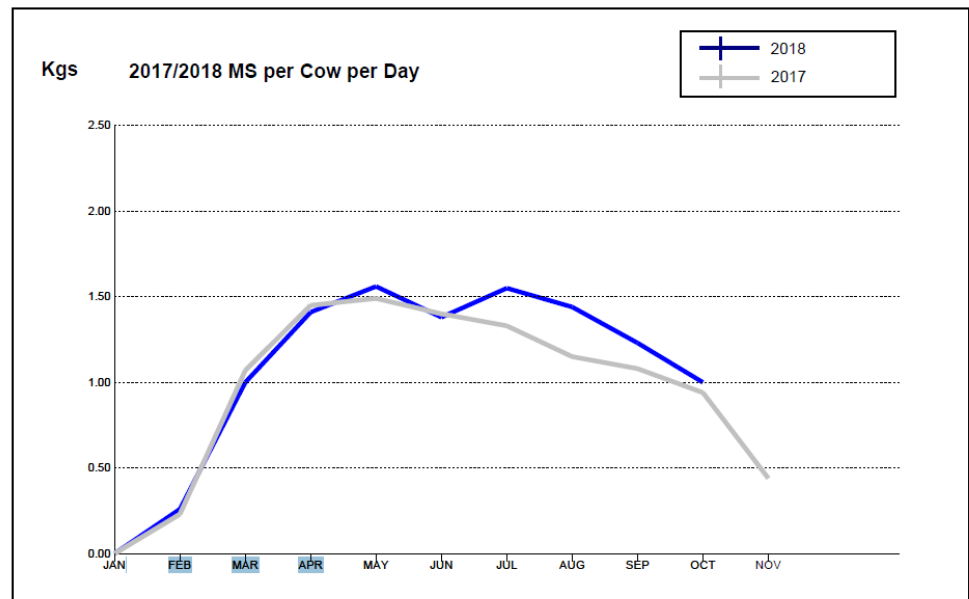
Herd Performance

2017

- 332 kg MS/Cow
- 4.93% Butterfat
- 4.21% Protein
- SCC 192,000

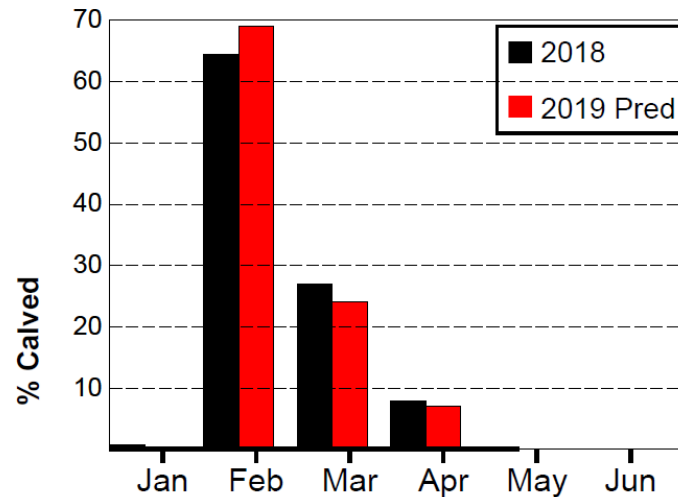
2018

- 356 kg MS/Cow
- 4.8% Butterfat
- 4.09% Protein



Herd Performance

Current & Predicted Spring Calving Pattern



- 365 day calving interval
- 90% 6 wk calving rate
- Calved cows straight to grass

Current Performance

- Ration 2018 – 850kg/cow
 - Usually < 200kg
- Cost of production €2.39/kgMS (ePM 2017)
- Average milk price 2018 – 44.2 c/l
 - Average coop price 37.5 c/l

The Future

- Continue to keep it simple
- Maintain current cow numbers
- Focus on soil fertility
- Continue to improve herd genetics
- Milk until 1st December every year

