

**Chris Daly**  
**Breeding Webinar Night 3, Zoom – 27<sup>th</sup> March 2024**

## Making a breeding plan in 3 steps

### Define the system

- What is your market?
- What type of animal do you need to produce?
- What traits do you need to produce these animals

### Look at cow traits

- What are the strengths and weaknesses of your breeding females?
- Where do you need to improve?

### Improve through sires

- Sire selection is critical.
- Sires should be genetically superior to females.
- Sire could be 50% of genetics of a calf crop.

# Wesley Browne





System

## Beef Finishing Profile

Defaults to show all animals finished in the last 12 months from today's date. Use the filters to refine your search. The profile & herd average figures will update based on your selections.

Date From:

04/03/2023

Date To:

04/03/2024

Ybull

Suckler

Homebred

Factory P

€206

Carcass Weight

386kg



- 4/5-star heifers
- Right size
- Right colour



## Focus Areas

- Profitability – max output with minimum cost
- Calf per cow per year
- Calving at 24 months
- Heavy weanling
- 200-day weights
  - Bulls 273Kg
  - Heifers 254Kg
- Reduce age at finish
- Meet factory specifications
- Meet farmer requirements with heifers
- Manage labour input



Genetics

Management

Herd Replacement Index €113

Smaller cow – same carcass weight

**1. Summary Data** - Overview of weight performance of calves born in your herd and their dams.

## A. Calf Performance

### All Calves

	Born In Period*	No. Weighed**	ADG (kg)	Avg. 200 Day Weight (kg)	
				Your Herd	Target
All	95	87	1.11	264	N/A
Males	50	46	1.15	273	300
Females	45	41	1.07	254	250

Carcass 21kg

Milk 5.5kg

Calving interval +0.08days

Hybrid Vigour



# Past Stock Bulls

**LM0940**



**Terminal Index €176**

**Carcass 37.7Kg**

**Conformation 2.65 scale**

**Milk 2.3Kg**

**Calving interval +2.53 days**

**Calving difficulty 8.1/3.3%**

**SA1124**



**Replacement Index €204**

**Carcass 21.3Kg**

**Conformation 1.39**

**Milk 7.5Kg**

**Calving interval -6.4days**

**Calving Difficulty 6.3/3.2%**

**SI474**



**Replacement Index €163**

**Carcass 29.3Kg**

**Conformation 1.52 scale**

**Milk 10.5kg**

**Calving interval -2.09days**

**Calving difficulty 9.3/4.0%**

# Current Stock Bulls

**SI474**



**AA1922**



**Replacement Index €163**

**Carcass 29.3Kg**

**Conformation 1.52 scale**

**Milk 10.5kg**

**Calving interval -2.09days**

**Calving difficulty – 9.3/4.0%**

**Replacement Index €128**

**Carcass 23.5Kg**

**Conformation 0.61**

**Milk 13kg**

**Calving interval -1.93days**

**Age at finish -20.28days**



- Priority is Terminal traits for new bull
- A number of bulls earmarked in upcoming sales.



# Current Stock Bulls

Evaluation Date: Jan 2024		Next Evaluation Date: 19-Mar-2024		
Star Rating (Within Limousin breed)	Economic Indexes	€uro value per progeny	Index Reliability	Star rating (across all beef breeds)
★★★★★	<b>Replacement</b>	€144	48% (Average)	★★★★★
★★★★★	<b>Terminal</b>	€175	50% (Average)	★★★★★
Calving Difficulty (births requiring considerable assistance; % 3 & 4)				
When Mated With:		Value	Reliability	
<b>Beef cows</b> Breed avg: 3.52%,All breeds avg: 3.63%		+3.4%	73% (High)	
Beef heifers Breed avg: 7.82%,All breeds avg: 7.71%		+7.8%	52% (Average)	
Star Rating (Within Limousin breed)	Key Replacement Profit Traits	Value	Reliability	Star rating (across all beef breeds)
Expected Progeny Performance				
★★★★★	Docility (1-5 scale) Breed avg: -0.05,All breeds avg: 0.02	0.09 scale	64% (High)	★★★★★
★★★★★	Carcass weight (kg) Breed avg: 23.95kg,All breeds avg: 17.98kg	+35.7kg	49% (Average)	★★★★★
★★★★★	Carcass conformation (1-15 scale) Breed avg: 2.2,All breeds avg: 1.49	+2.82 scale	46% (Average)	★★★★★
Expected Daughter Breeding Performance				
	Daughter calving diff (% 3 & 4) Breed avg: 4.66%,All breeds avg: 5.1%	+4.8%	67%	
★★★★★	Daughter Milk (kg) Breed avg: -0.02kg,All breeds avg: 2.69kg	+4.9kg	46% (Average)	★★★★★
★★	Daughter calving interval (days) Breed avg: 1.04days,All breeds avg: -0.88days	+1.86days	37% (Low)	★

# Trevor Boland





## System

- Part-time farmer
- 50 Autumn calving cows
  - August to October
- Selling all males starting in July – 500kgs at 12 months
- Sells surplus heifers 1.5-2 years
- Buying cattle for summer grazing
- Calf per cow per year
- Calving at 24 months
- 100% AI

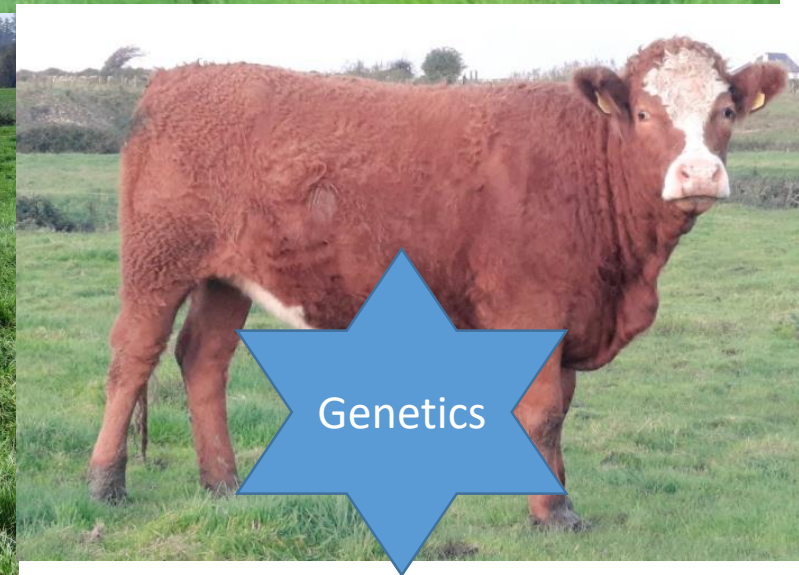
Farming 46.88ha in 5 blocks in Dromard, Co. Sligo.





## Focus Areas

- Profitability – max output with minimum cost
- Heavy saleable weanling Bulls & Heifers
- 200-day weights
  - Bulls 275Kg
  - Heifers 252Kg
- Manage labour input – Part Time
  - Ease of calving
  - Shorter calving spread
  - Shorter breeding season







Increase carcass – maintain milk

Weaning Efficiency (Calf 200 Day Weight as % of Cow Weight)	
Your Herd	Target
48%	42%
54%	42%
48%	42%
47%	42%

Sustainable weaning

Labour – Calving ease & Reduce the calving spread



**Ewdendale Ivor –  
LM2014**



# Past Sires

**Dalriada Red Perfection –  
AA4752**



**Highfield Odran –SA2153**



**Replacement Index €152**

**Carcass 28.4Kg**

**Conformation 2.43 scale**

**Milk 0.20Kg**

**Calving interval - 0.80ays**

**Calving difficulty 6.0/2.6%**

**Replacement Index €183**

**Carcass 8.8Kg**

**Conformation 0.77**

**Milk 4.0Kg**

**Calving interval -7.45days**

**Calving Difficulty 4.9/2.3 %**

**Replacement Index €225**

**Carcass 19.8Kg**

**Conformation 1.23 scale**

**Milk 8.2kg**

**Calving interval -2.62days**

**Calving difficulty 5.7/2.2%**



# Future Sires

**Lapon – CH4321**



**Drumline S LM9577**



**Pottlereagh Mark CH4160**



**Terminal Index €152**

**Carcass 42.2 Kg**

**Conformation 2.26 scale**

**Calving difficulty 9.0/4.9%**

**Rep Index €184 - Term Index €194**

**Carcass 38.2Kg**

**Conformation 2.71**

**Milk 4.3Kg**

**Calving interval 1.44days**

**Calving Difficulty 6.8/3.0 %**

**Rep Index €141 - Term Index €127**

**Carcass 34.3Kg**

**Conformation 2.0 scale**

**Milk – 5.3kg**

**Calving interval -8.8 days**

**Calving difficulty 9.1/4.2%**

# Questions