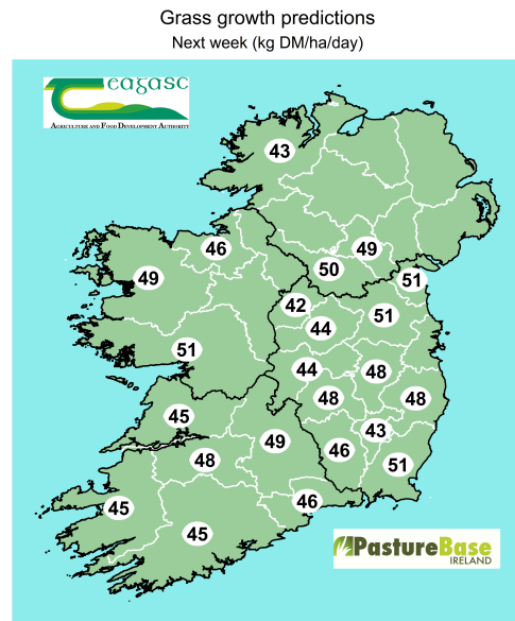
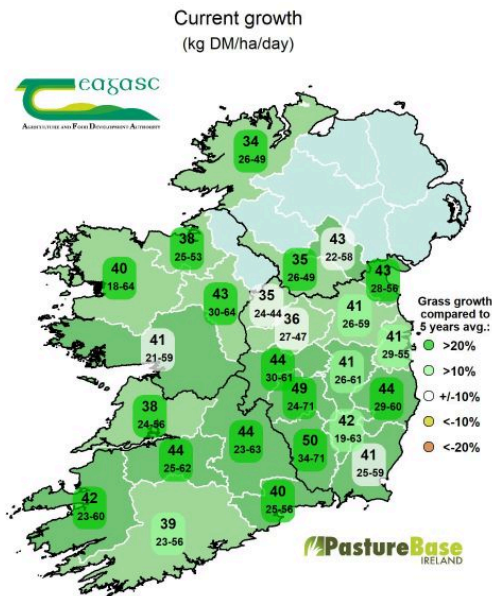


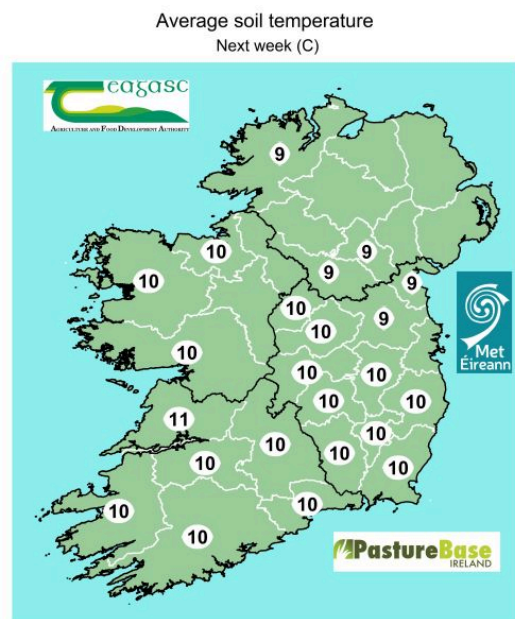
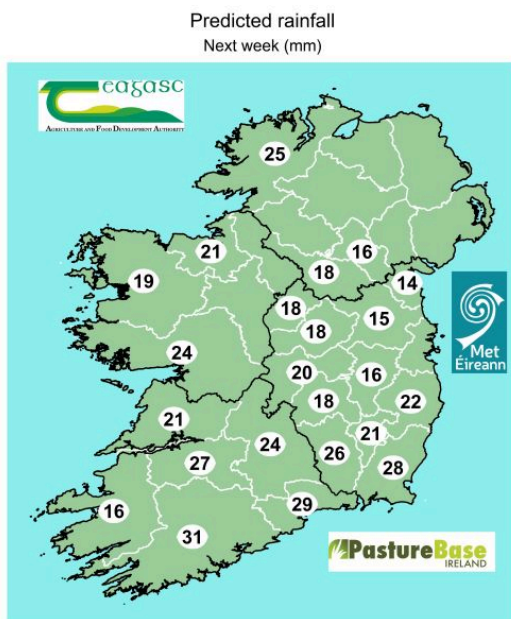
Grass10 Newsletter

334th Edition - 8th April 2025

Current grass growth & predicted grass growth



Rainfall & soil temperature predictions for the next 7 days



- Current grass growth vs 5 year average is ahead of target

- Grass growth is predicted to range between 43-51 kg DM/ha
- Rainfall amounts are between 15- 31mm
- Soil temperatures 8-11°C



DRY MATTER%



Moorepark



Athenry



Oakpark



Johnstown



Dairy Farms - PastureBase Data

AFC:
735 kg DM/ha



Growth:
40 kg DM/ha



Diet: 13 kg
DM Grass +
4.5 kg Meal +
1.5 kg Silage



Drystock Farms - PastureBase Data



AFC:
761 kg DM/ha



Growth:
29 kg DM/ha



PastureBase
IRELAND

Weekly Checklist



Grass growth now
ahead as we approach
2nd rotation



Starting the 2nd
rotation







Get to a reseeding
event near you!

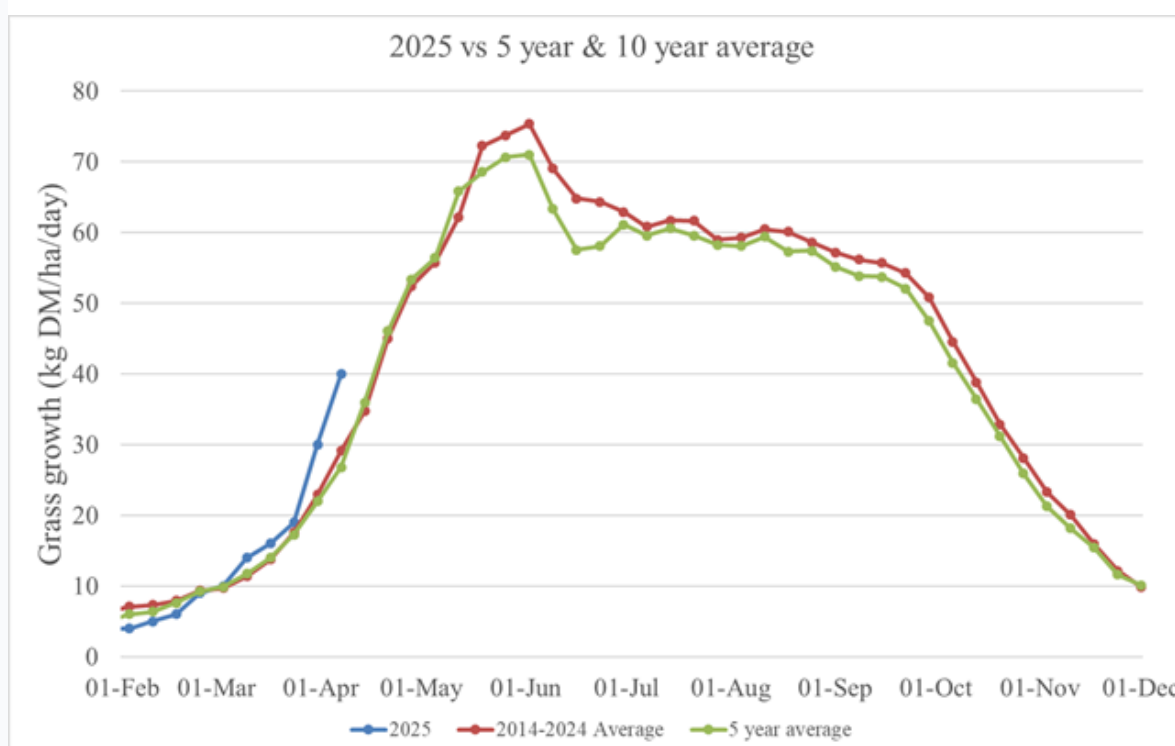


Get up to date
with Nutrient
Application



Dairy Farm Cover Data - 8th April

	Cover/LU < 160 KG DM/LU (Category 1 Farms) 	Cover/LU 160 - 220kg DM/ha (Category 2 Farms)	Cover/LU  >220 kg DM/LU (Category 3 Farms)
% of farms	9%	35%	56%
Mean AFC	506 kg DM/ha	682 kg DM/ha	794 kg DM/ha
Cover/LU	130 kg DM/LU	196 kg DM/LU	272 kg DM/LU
Growth rate	32 kg DM/ha	41 kg DM/ha	43 kg DM/ha
PBI Demand	39 kg DM/ha	41 kg DM/ha	39 kg DM/ha
Grass Allocation Target	12 kg Grass - Grass by day	15-17 kg Grass - Fulltime at grass	Fulltime at grass, 15-17 kg grass, reduce meal being fed
Nutrient Application Target	Target 75 kg N/ha (60 units/ac) by 1st April For farms on target, apply 20 kg N/ha (16 units/ac) by mid-April 		



Grass growth now ahead as we approach 2nd rotation

- AFC needs to be maintained above 600 kg DM/ha on all farms & 200 Kg DM/LU throughout early April
- Growth is ahead of the 5 & 10 year average
- Many farmers have now started their 2nd grazing rotation
- A proportion of farms (10%) are currently below AFC targets and growing less pasture as a result
- Therefore, walking the farm every week to assess grass supply is critical
- Farms in Category 1 need to monitor grass demand on farm now
- Both Category 2 and 3 farms are on track (AFC is adequate as is grass demand) at present
- Farms in category 2 & 3 need to remove silage from the diet

Starting the 2nd rotation

- To begin the 2nd rotation, the first 4-5 grazed paddocks must have a cover >1200 kg DM/ha. If the cover is below this threshold, you will need to extend the rotation start date further into April
- For many farms the AFC should be at least above 650-700 kg/ha or 200 kg/LU at the start of 2nd rotation

- If possible, it is important to mix 1st & 2nd round grass

Get to a reseeding event near you!

- The Grass10 team along with Clover150 & our colleagues in the advisory service are running reseeding events throughout the country during April/May
- Great opportunity to reseed with current ground conditions
- Reseeding enables more grass to be grown (especially in spring), high quality grass to be eaten and higher animal performance
- Reseeded pastures are more responsive to N application & enable the incorporation of clover
- See flyer below for info on an event near you

Get up to date with Nutrient Application on silage paddocks

- Important to get up to date with fertiliser application on silage paddocks now as we enter April
- See table below for info
- Do not forget sulphur when fertilising for a 1st cut of silage



The Teagasc Grass10 team, in conjunction with Clover150 & the Advisory Regions are running a series of Reseeding Events nationwide. These events will focus on a machinery & over-sowing demo, seedbed preparation & post sowing management, and suitable summer stocking rate to enable reseeding.

All events will commence at 11am.

Date	Location
10 April	Cyril & Matthew Draper, Ballineen, Co. Cork. P47 YK09
15 April	Martin & James O'Toole, Outfarm, Ballycarney, Co. Wexford. Y21 X5N8
17 April	Pat & Una Dillon, Cuffsgrange, Co. Kilkenny. R95 YX56
17 April	John Cashen, Carrig, Co. Tipperary. R42 ET91
17 April	Liam Delaney, Derrygarron, Portlaoise, Co. Laois. R32 ET10
24 April	John Galvin, Boggagh, Moate, Co. Westmeath. N37 XC98
29 April	Salesian Agricultural College Outfarm, Pallaskenry, Limerick. V94 V8N3
30 April	James & Martin O'Riordan, Kilbrin, Co. Cork. P51 YX70
30 April	Caroline & Raymond Niblock, Newbliss, Co. Monaghan. H18 R234
8 May	Karl Clarke, Soodry, Skreen, Co. Sligo. F91 E446
14 May	Enda Armstrong, Caherweelder, Co. Galway. H91 TP84

For more information, visit: www.teagasc.ie/reseedingevents



1st Cut Silage Nutrient Requirements

Soil Index	N	P	K	No Slurry	Cattle Slurry	No P Allowance
1	100 (80)	40 (32)	175 (140)	2 bags/ac Pro.Urea+S & 2+ bags/ac 0-7-30	1.5 bags/ac Pro.Urea+S (38-0-0+S)	4 bags 19-0-15+S
2	100 (80)	30 (24)	155 (120)	2 bags/ac Pro.Urea+S & 2 bags/ac 0-7-30	1.5 bags/ac Pro.Urea+S (38-0-0+S)	4 bags 19-0-15+S
3	100 (80)	20 (16)	125 (100)	2 bags/ac Pro.Urea+S & 2 bags/ac 0-7-30	1.5 bags/ac Pro.Urea+S (38-0-0+S)	4 bags 19-0-15+S
4	100 (80)	0	0	2 bags/ac Pro.Urea+S	1.5 bags/ac Pro.Urea+S (38-0-0+S)	4 bags 19-0-15+S

Grass10 Featured Farmer

AFC:
718 kg DM/Ha
Growth:
39 kg DM/Ha
Demand:
49 kg DM/ha
Cover/LU
220 Kg DM/LU



Milking 90 cows



Cow Diet:
15kg grass +
5kg meal

Milk Yield
29 Litres @
4.62% Fat &
3.4% Protein

2ND ROTATION
I have one week left on the first rotation. My best 4 pdks back on 2nd rotation have 900-1000 Kg DM/Ha. Cows are milking well now that I am on fulltime grass



**Oisín
Gallen,
Ramelton,
Co. Donegal**



RESEEDING
I plan on reseeding about 15% of my platform when I get settled in 2nd rotation. Planning on spraying off towards the end of April



Oisín's cows content at fulltime grass in Co. Donegal



Michael O'Donovan, Head of the Grassland Science Department, Teagasc joins James Dunne on last week's episode of the Dairy Edge podcast to discuss how to increase your grassland performance.

[Listen to this episode here](#)

This email was sent to {{ contact.EMAIL }} You received this email because you registered with Teagasc PastureBase Ireland or Teagasc Grass10

[Unsubscribe here](#)

The Teagasc Grass10 Campaign is supported by:



An Roinn Talmhaíochta,
Bia agus Mara
Department of Agriculture,
Food and the Marine



Teagasc,
Head Office,
Oak Park,
Carlow
Tel: 059-9170200
Email: grass10@teagasc.ie

