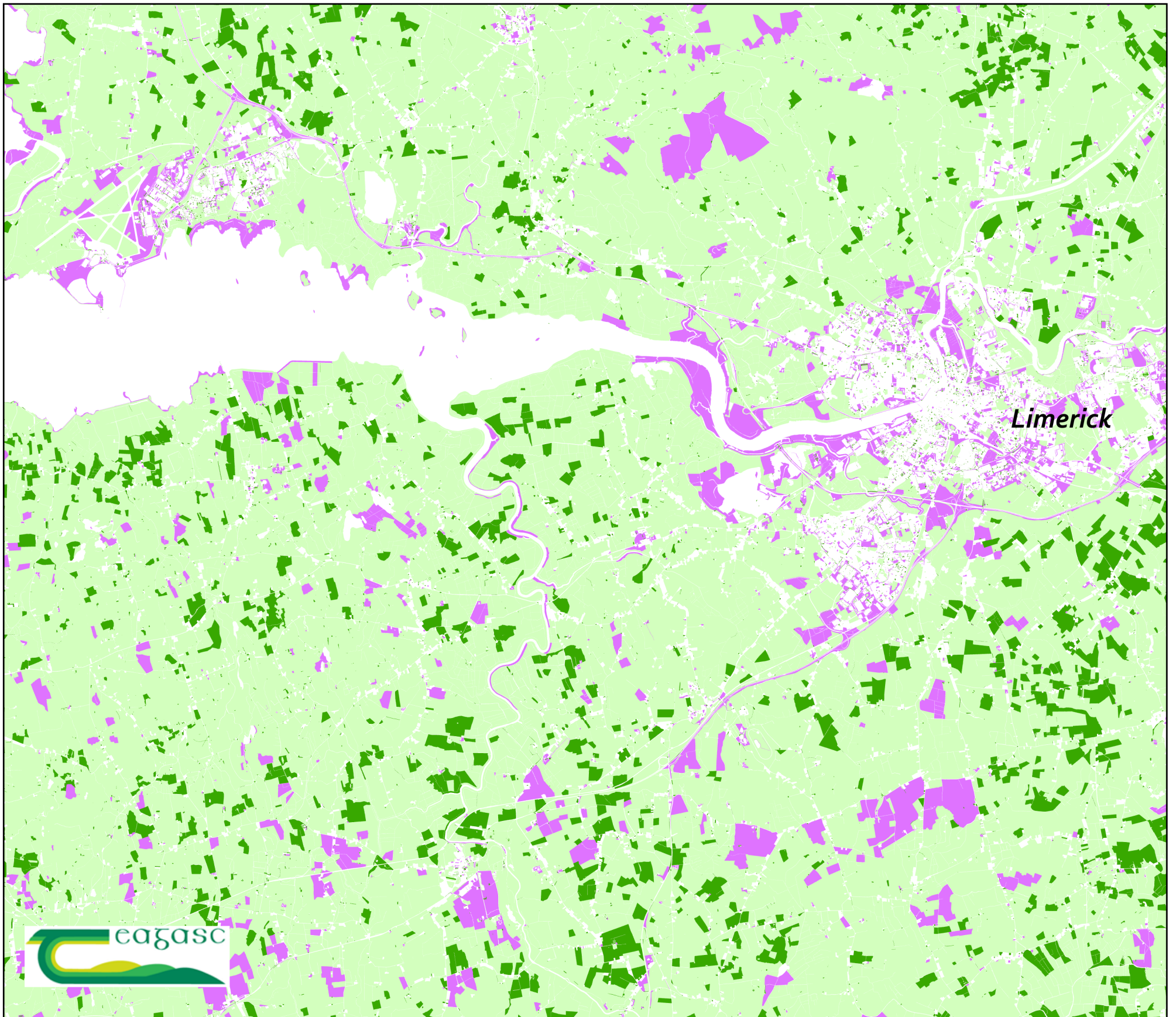


Creating an indicative history of vegetation cover since the 1980's



The land use history of any parcel of land is an important piece of information. Knowing the history can help us understand issues like greenhouse gas accounting, bio-diversity, soil health. Here is presented an interim output from a study that seeks to establish how often parcels are apparently bare of vegetation, due to harvesting or re-seeding.

Using the Teagasc archive of satellite imagery going back to the 1980's we can use vegetation indices to give an indication of whether vegetation is present or not. Because of cloud cover each field is only imaged perhaps 4 times a year, so the analysis can only give an indication of how often the parcel has had low vegetation cover. The archive used had 317 Images over 35 years up to 2019, each parcel had on average 210 observations. The dark green fields have been covered with vegetation almost permanently in this record, with fewer than 2 low observations.

The pink fields have been apparently bare in more than 10% of the observations. These fields are mostly tillage, with some pink areas around Limerick city (and other towns) due to recent building in the city .

Projection: ITM

Percentage observations with low vegetation cover

■ Less than 0.5%

■ 0.5% to 10%

■ Greater than 10%