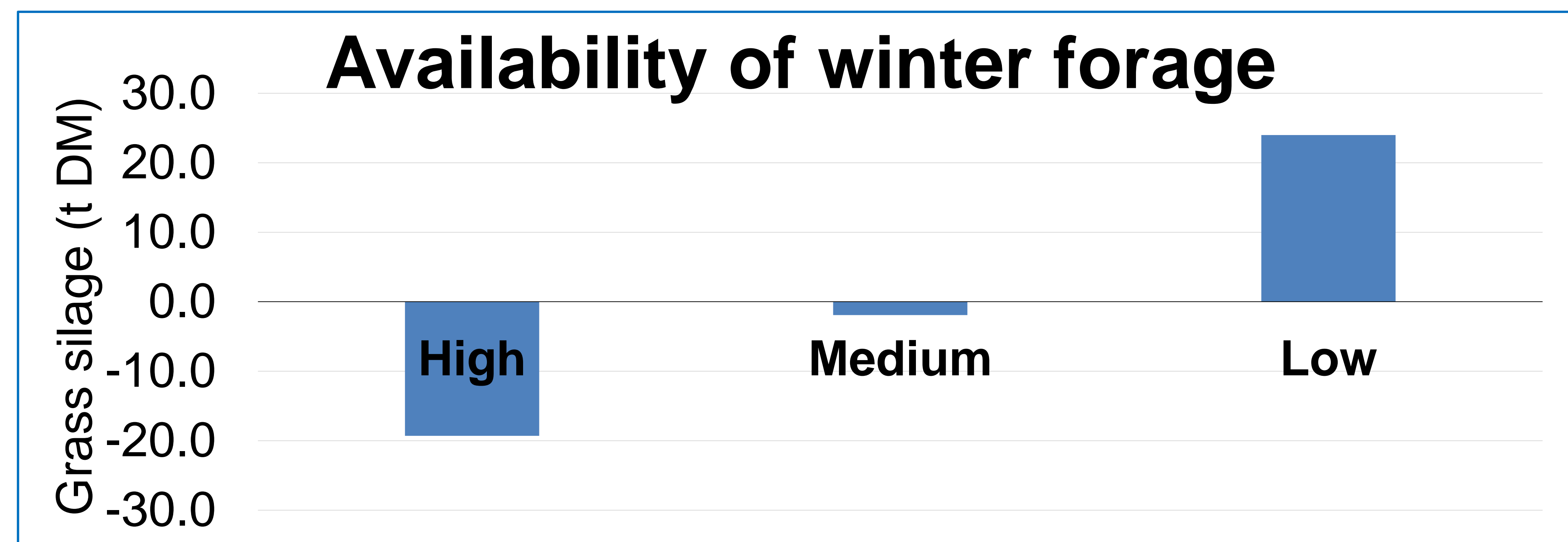


# Optimising Stocking Rate Of Dairy-Beef Systems

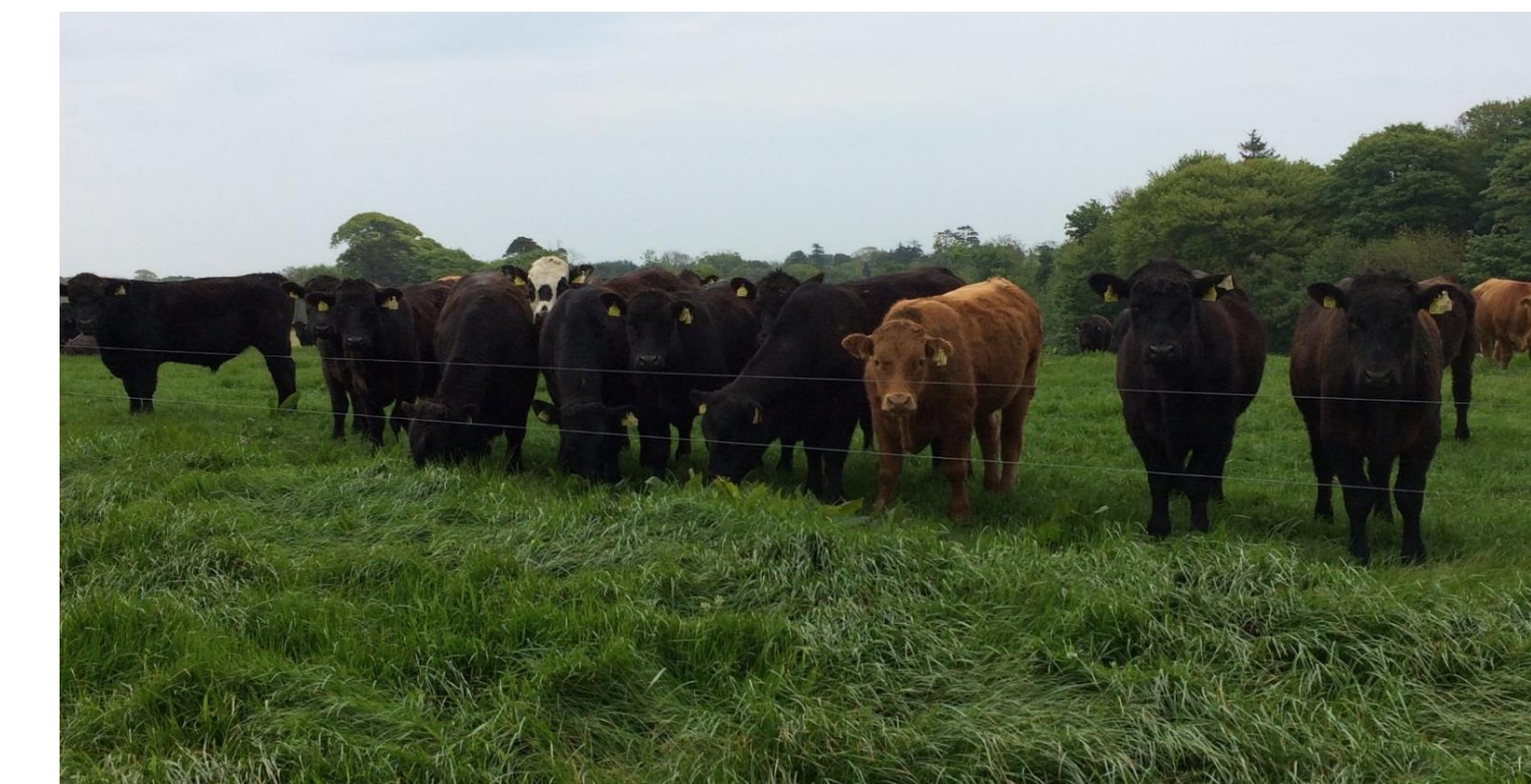
## Summary of Johnstown Castle Study

- Stocking Rate (SR) of 2.6, 2.9 and 3.2 LU/ha
- Increased SR reduced carcass performance of 21 month heifers, **but** had no impact on 27 month steers
- Animals on high SR intensities can compensate for periods of herbage restriction
- High SR didn't produce adequate winter forage
- **Medium SR optimises animal performance and the provision of feed**



## Performance of 21-month heifers

	*Carcass weight (kg)	*Conf. score (scale 1-15)	Weight at 550 days	ADG second season	ADG second winter
High SR	261	5.6	420	0.81	1.09
Medium SR	262	5.6	428	0.81	0.94
Low SR	266	5.9	432	0.86	0.99



## Performance of 27-month steers

	*Carcass weight (kg)	*Conf. score (scale 1-15)	Weight at 620 days	ADG second season	ADG third season
High SR	335	5.5	499	0.85	1.43
Medium SR	337	5.6	503	0.88	1.29
Low SR	337	5.4	507	0.89	1.30

*\*Heifer and steers adjusted to 638 and 821 days of age, respectively*