



Protecting the Watercourse Habitat

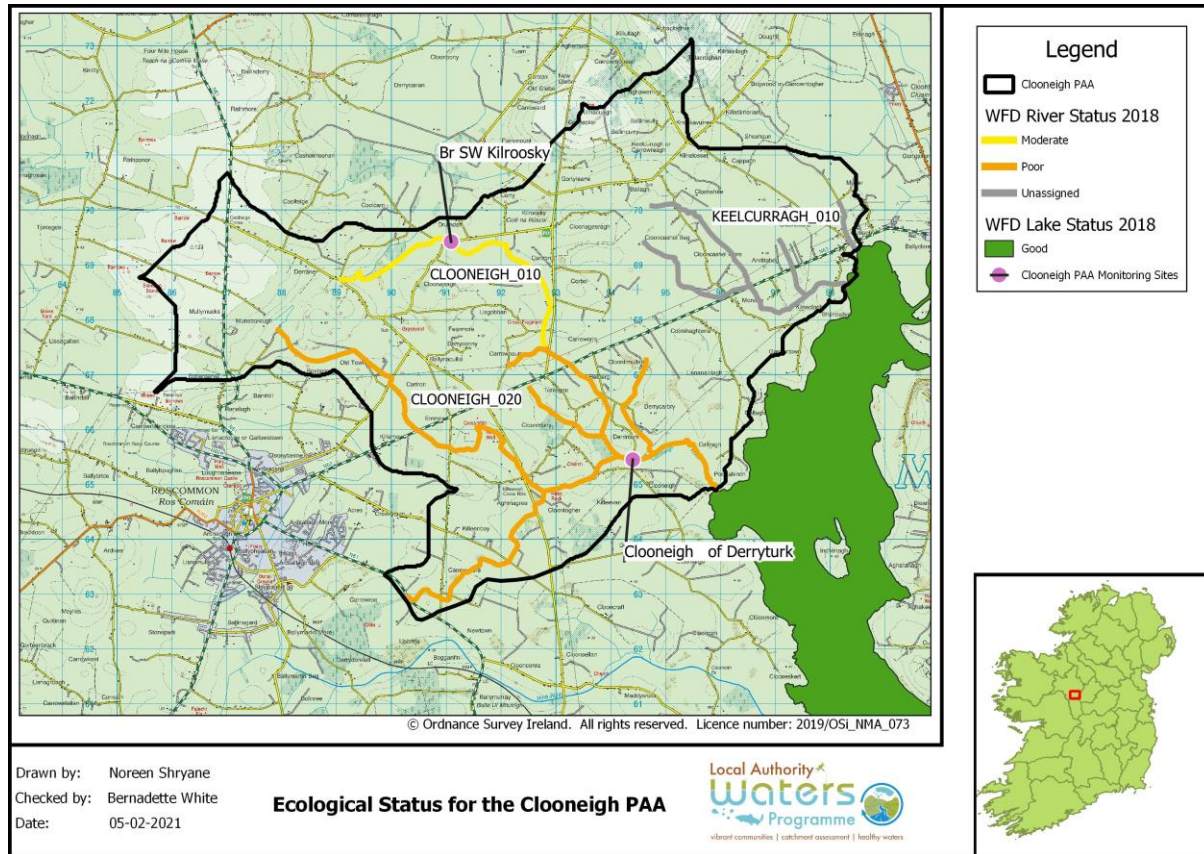
Kieran Kenny
ASSAP Advisor, Roscommon/Longford
7th February 2024

Protecting the Watercourse Habitat

Overview

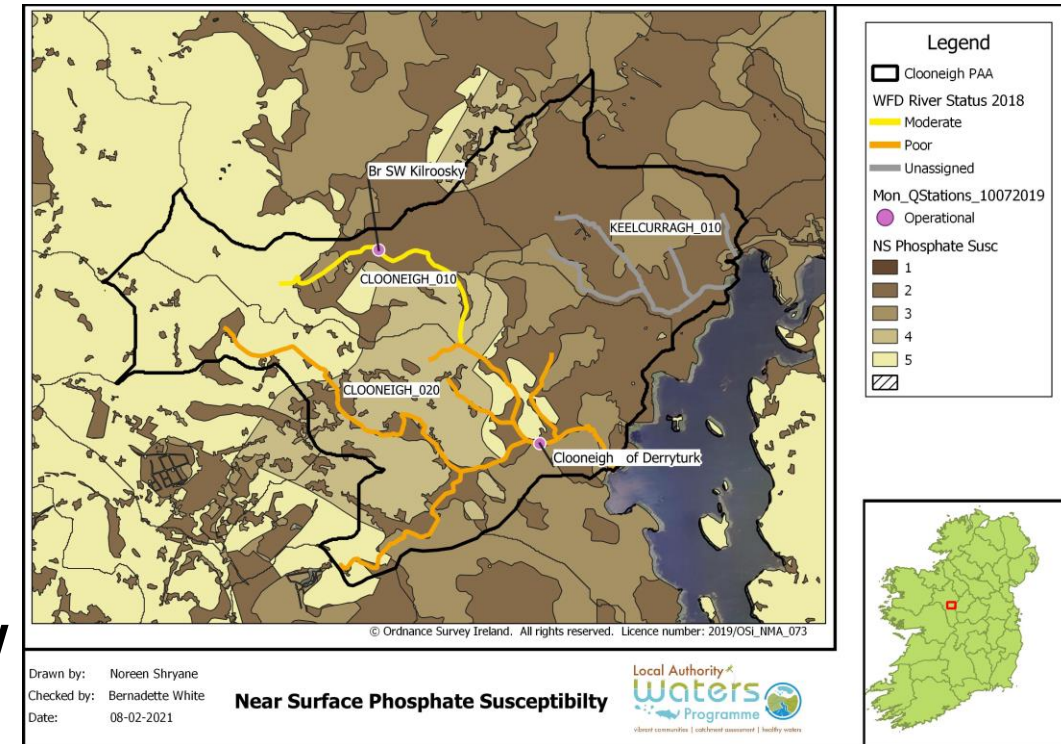
- Background to Catchment
- Engagement with farmers
- Causes and consequences of poor practice
- Lessons learned

Clooneigh Catchment



Clooneigh Catchment

- Poorly draining mineral & peat soils
- Pressures - sediment & nutrients
- Widespread and diffuse
- Significant issues:
Drain maintenance, poaching
unrestricted access, overland flow
- Point sources - effluent



Clooneigh Catchment Issues



Good Farmer Engagement

- Farmer meeting & newsletter
- 56 farms assessed



Good Farmer Engagement



Poor Practice



Before

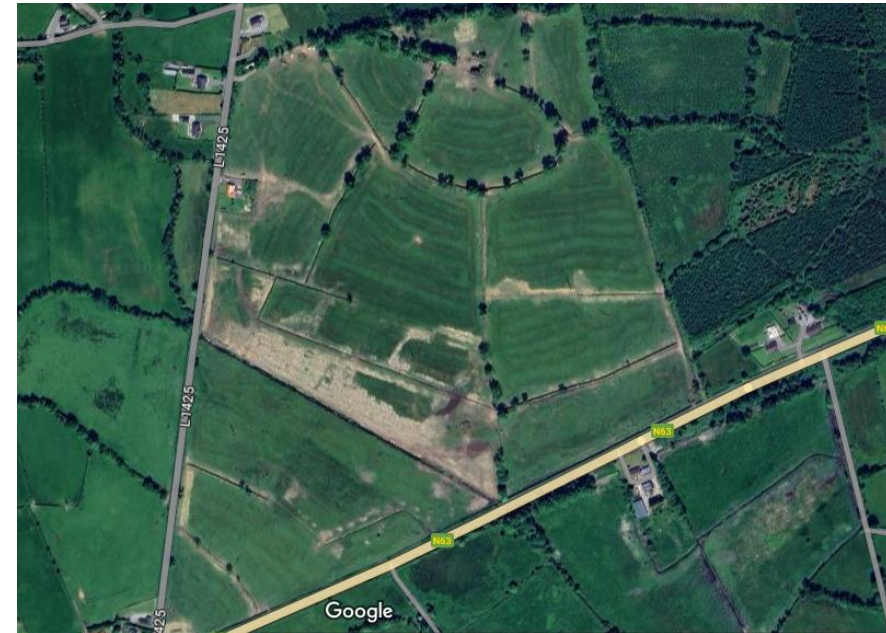


Poor Practice



Factors Influencing Poor Practice

- Desire to 'improve the land'
- No awareness of local issues
- Poor awareness of regulation
- Interaction with adviser & others?
- Interaction with contractor?



Consequences of Poor Practice

- Destruction of biodiversity and habitats
- Impact on climate change
- Impact on landscape aesthetics
- Huge impact on water quality
- Good work undermined

Lessons Learned

- Importance of communication and collaboration
- Absolute need for consistent advice
- Nature based approach required
- Greater contractor responsibility
- Greater community engagement



‘With Great Power, Comes Great Responsibility.’