

MAgrSc Innovation Support Programme 2017-2019

Study title: *Improving profits on winter milk farms in the North-Western region through the use of co-design tools to enhance KT packages*

Student: Rachel Spillane

Supervisors: Dr. Joe Patton, Teagasc
Dr. Edel Kelly, UCD

Office location: Mullingar

Study Objectives

- To determine the key farm management and production efficiencies of winter milk farms
- To explore the economic issues and challenges that winter milk producers face on their farms
- Establish guidelines/solutions to these issues and challenges developed with the farmer using participatory action research

Study Methodology

- Observation at two events
- Quantitative analysis
 - Secondary data: 2016 PM data
- Qualitative data
 - Identify farmers from Teagasc discussion groups
 - Use the snowballing technique to extend scope beyond Teagasc farms
 - Reach theoretical saturation
 - Invite farmers to attend workshop for in depth discussion

Progress to date (Since Jan 2018)

- Began analysing profit monitor data
- Contacted advisors in the West, North West and Midlands
- Beginning to compile list of farmers winter milking

Findings to Date

- Observations in October 2017,
 - Suggests that winter milk producing farmers in the west, northwest & midlands feel marginalised due to the poorer weather conditions & soil type
 - *‘ye come up here telling us what to do but ye don’t understand what it’s like up here. The weather conditions are total different to down where ye are.’*

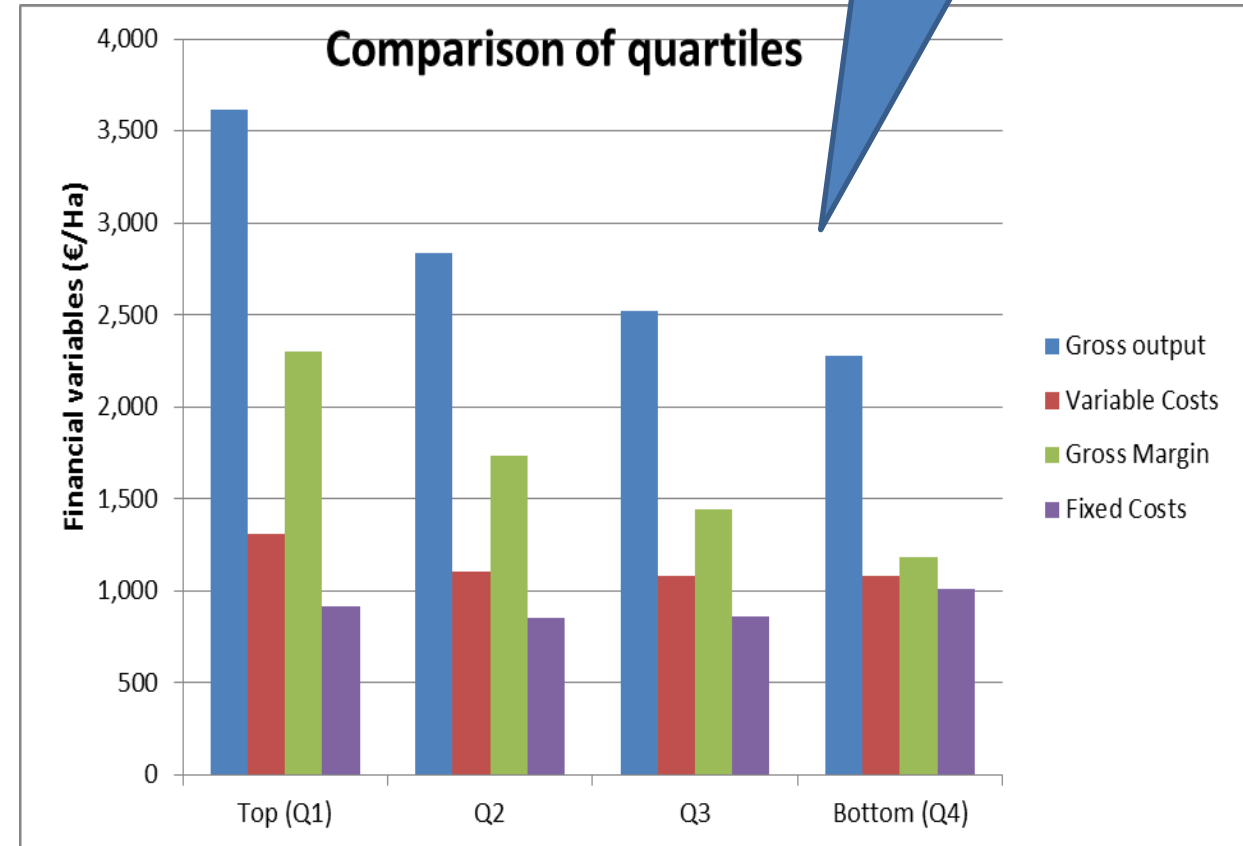
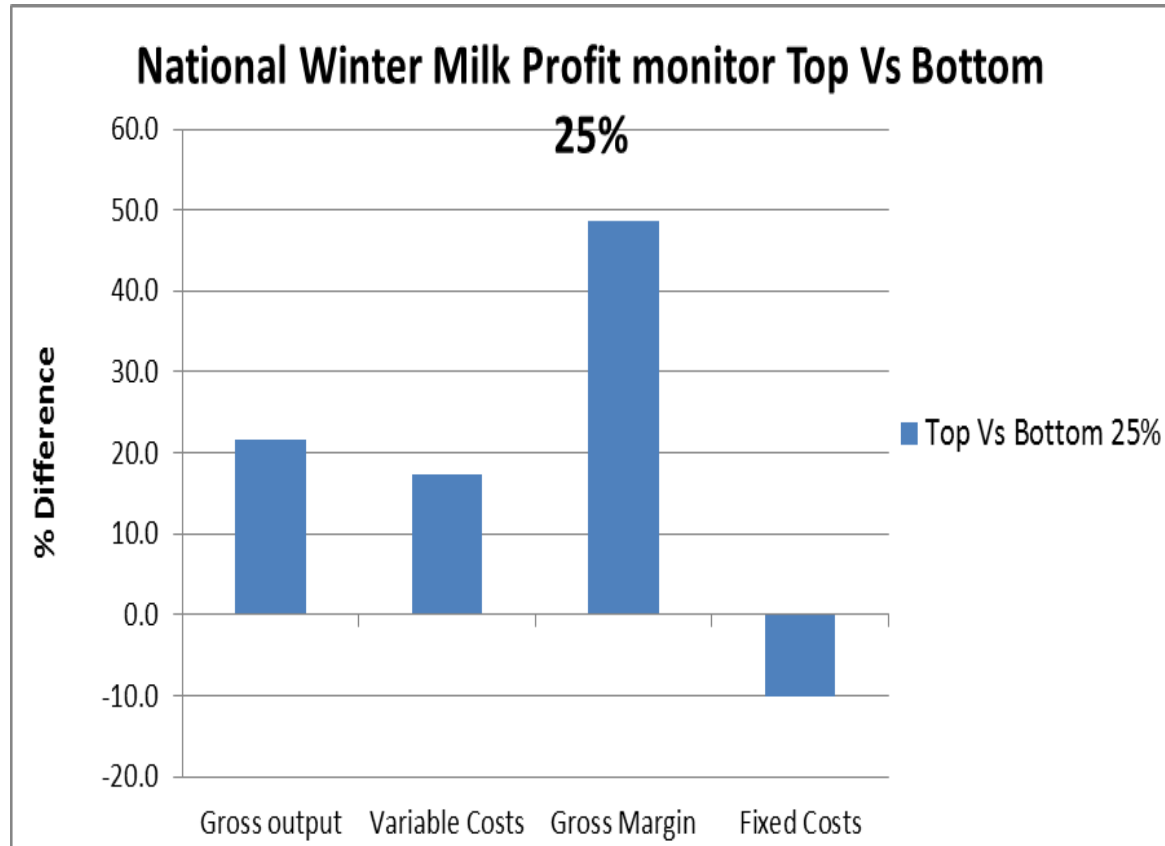
Compact calving

Streamline system
as much as
possible

Importance of
work/life balance

Findings to Date

Gap between top
& bottom farmers



Advisory/Education work (Jan – June 2018)

- E profit monitors
- Mapping out farms/designing paddock layout
- BPS
- Farm health & safety plans (FIPs)
- Testing for sugars and nitrates in grass

Schedule of Activities (Work Plan)

(June 2018 – June 2019)

Quarterly schedule of research activities:

Schedule of Activities (Work Plan)

Challenge to encourage famers to attend workshops

Month	Activity
June-August 2018	<ul style="list-style-type: none">• Recruit farmers Talk to farmers• Hold workshop (Beginning of August)
September-Dec 2018	<ul style="list-style-type: none">• Transcribe workshop & begin analyzing
January-Feb 2019	<ul style="list-style-type: none">• Analyse and begin write up of thesis
March-June 2019	<ul style="list-style-type: none">• Complete write up & submit