

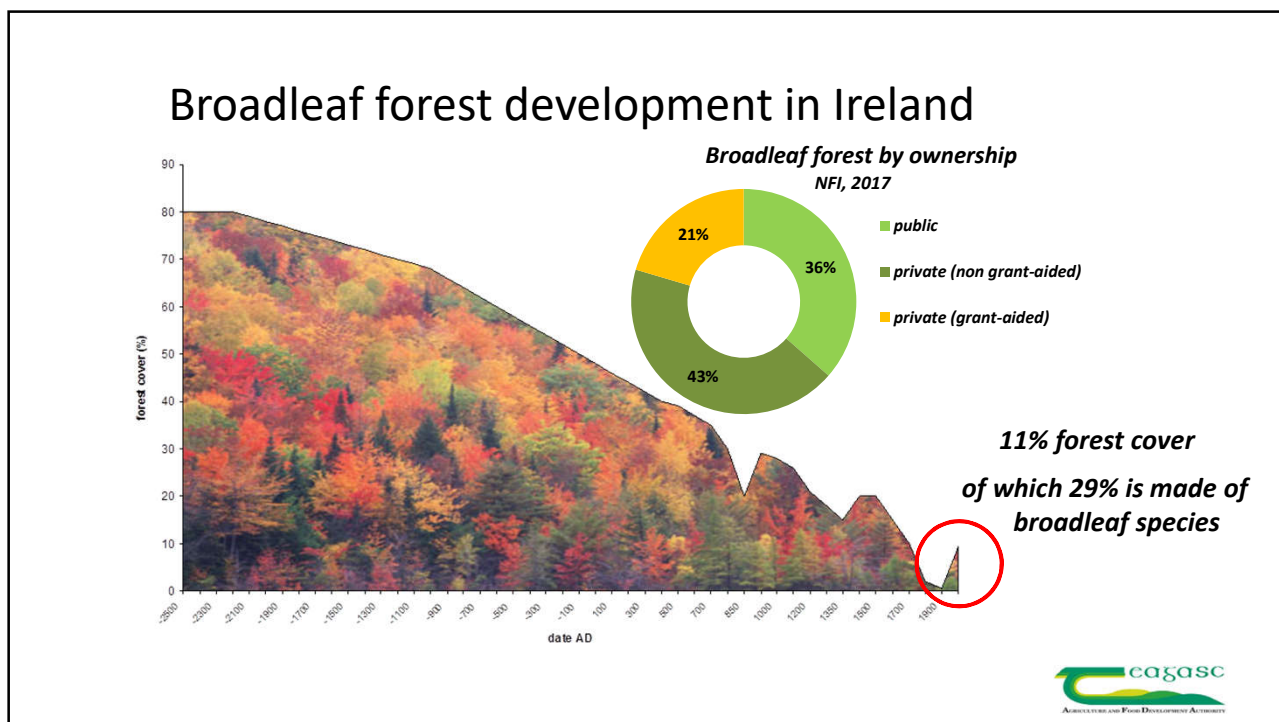


New Broadleaf Woodlands in Ireland and the Hardwood Focus initiative

Jonathan Spazzi, Forestry Development Officer, Teagasc

Timber Production Roadmap



Planting

Thinning

Semi-mature

Mature/regeneration

Adapted from Short, 2018 and Sanchez, 2017



From woodland to products:
new rural enterprises

SHERLOGS
CRAFT TIMBER

County Meath

Lawderdale Furniture Company

County Leitrim

Mark Donnelly

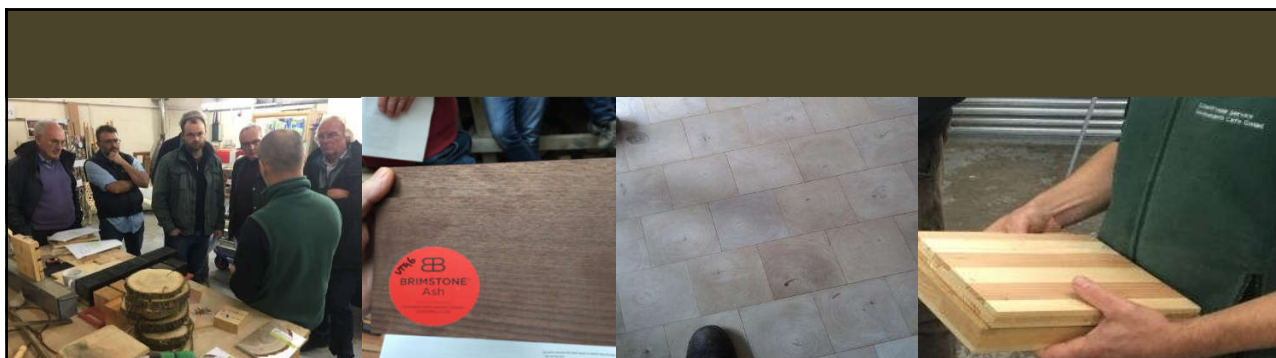
County Cork





Hardwood Focus initiative

- A discussion group started by Teagasc in collaboration with the Limerick Tipperary Woodland Owners (LTWO) group and GMIT Letterfrack
- To foster active management and explore intermediate markets
- DAFM funding in 2019 for a range of activities
- Group member, Jonathan Sykes, investing in on-farm saw-milling equipment
- Log testing currently on-going with GMIT: John O'Connell, Jonathan Sykes



The Hardwood Focus initiative: the study tour to Wales



Conclusions

- Efforts towards active management
- The beginning of commercial activities towards adding value
- Can these initiatives be consolidated and scaled-up at regional and national level ?

