

ACRES CP

Local Action Plan

Cooley Peninsula

Padraig Cronin
Project Manager ACRES Leinster

12/11/2024



An Roinn Talmhaíochta,
Bia agus Mara
Department of Agriculture,
Food and the Marine



Outline

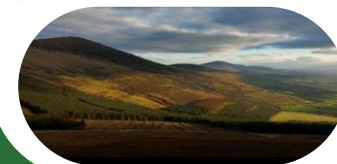
1. Introduction
2. Local Action Plan
3. The right action in the right place
4. Innovation – Remote Sensing and Actions Explorer



RECOGNISE. SUPPORT. REWARD

1. Who we are – Hen Harrier Programme Ltd

- Delivered the Hen Harrier Project EIP as part of the last CAP
- Worked specifically on 6 Hen Harrier SPA's across the country
- Result based approach – habitat assessments plus annual work plans to deliver actions which help improve the field scores
- 1,600 farmers participated 2018-2022
- Excellent engagement throughout the scheme



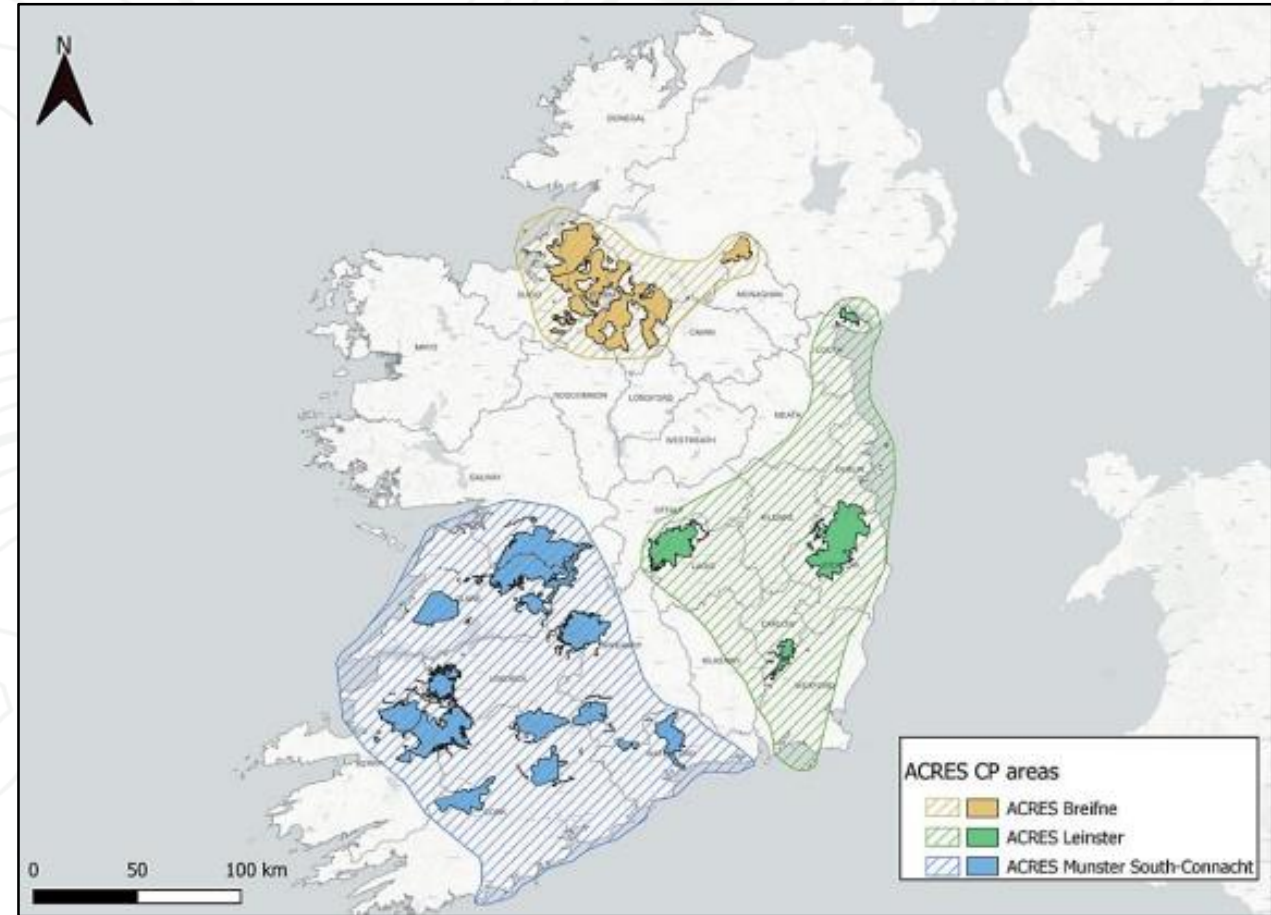
RECOGNISE. SUPPORT. REWARD

Who we are – Hen Harrier Programme Ltd

Contracted to deliver:

- ACRES Breifne
- ACRES Leinster
- ACRES Munster South Connacht

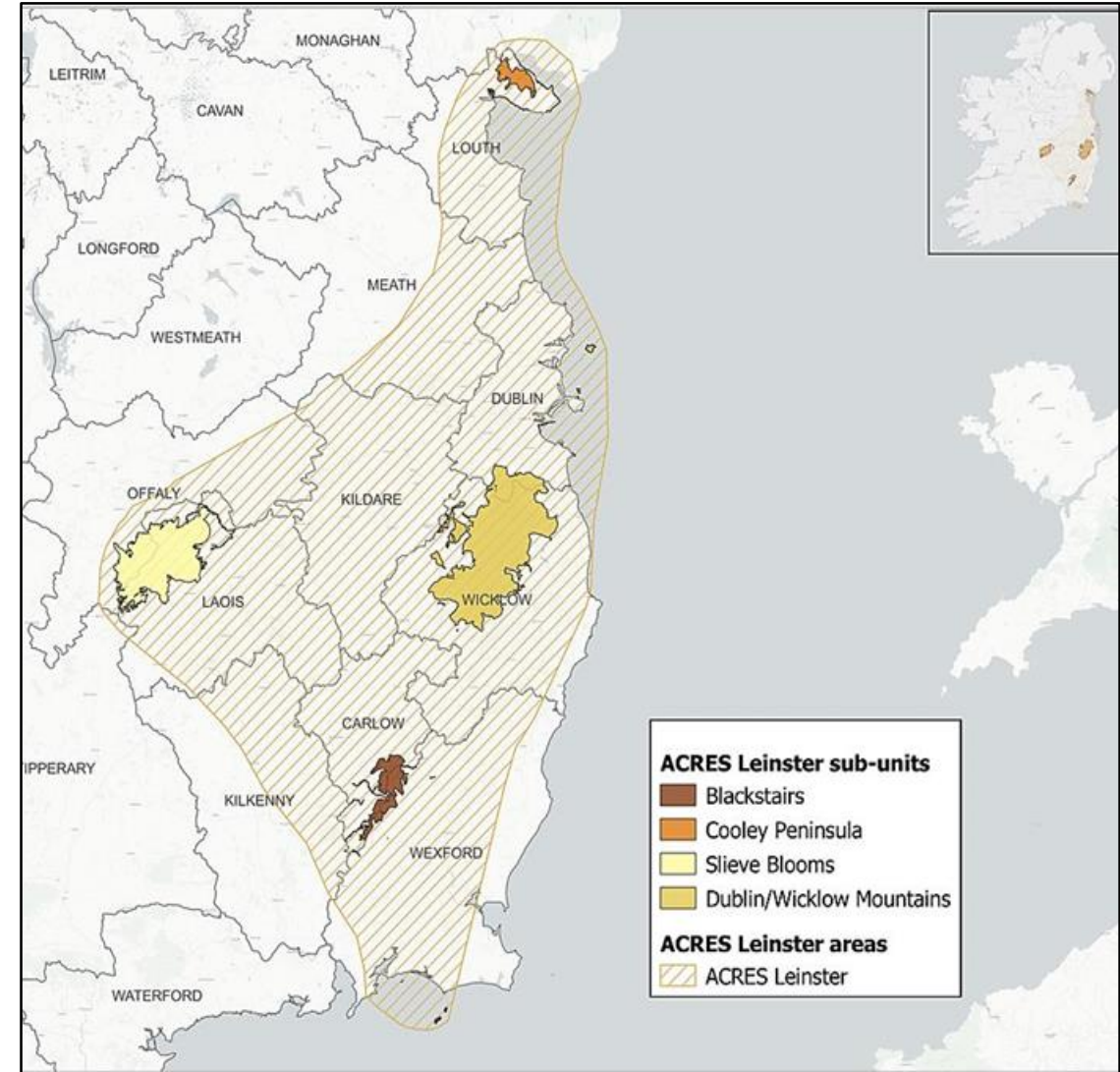
- Team of 33 people - agriculturalists, ecologists, data managers, drone specialists and archaeologists
- 4 offices – Galway, Kerry, Leitrim and Wicklow
- Total farmers 7,638



RECOGNISE. SUPPORT. REWARD

ACRES Leinster

- Includes 7 counties
- 905 farmers
- Total area in ACRES CP;
 - 11,350ha of private land
 - 33,240ha commonage
- Leinster split into 4 subdivisions
 - *Cooley Peninsula*
 - *Dublin/Wicklow Mountains*
 - *Slieve Blooms*
 - *Blackstairs Mountains*



RECOGNISE. SUPPORT. REWARD

ACRES LEINSTER

Cooley CP Zone

- Total area 3,628Ha
- Total commonage 2,854 Ha
- 106 farmers
- 88% of these have commonage
- Landscape Actions expected to be popular in this CP zone e.g. bracken & invasive species management and peatland actions



2. Cooley Local Action Plan

What is it?

- A document which identifies the specific environmental objectives in a CP zone
- As scorecard data is incorporated, it will be down to an individual field level
- Presents the data spatially
- Maps all the relevant resources in a CP zone e.g. habitats, species, NATURA 2000 sites, archaeology, waterbodies etc
- Illustrates how the different objectives interact and overlap with each other



RECOGNISE. SUPPORT. REWARD

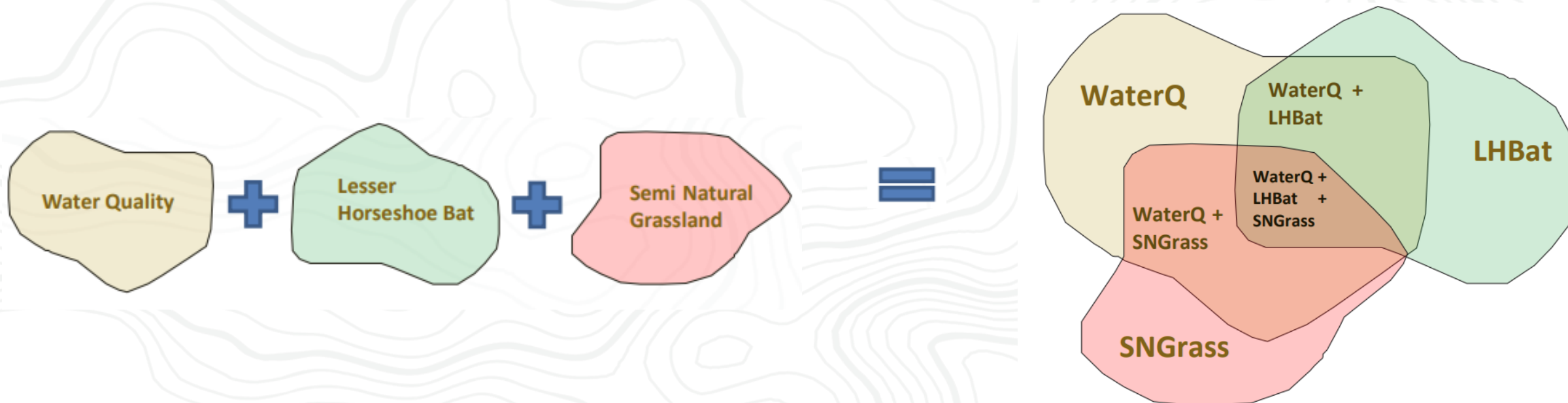
Cooley Local Action Plan - a

- Assists CP team in engaging stakeholders primarily farmers, in achieving those local objectives
- Living document – it will continually develop throughout ACRES CP up to 2027. Current version is the first iteration of the plan
- CP teams are in place to assist with the interpretation of all this data



RECOGNISE. SUPPORT. REWARD

3. Local Action Plan



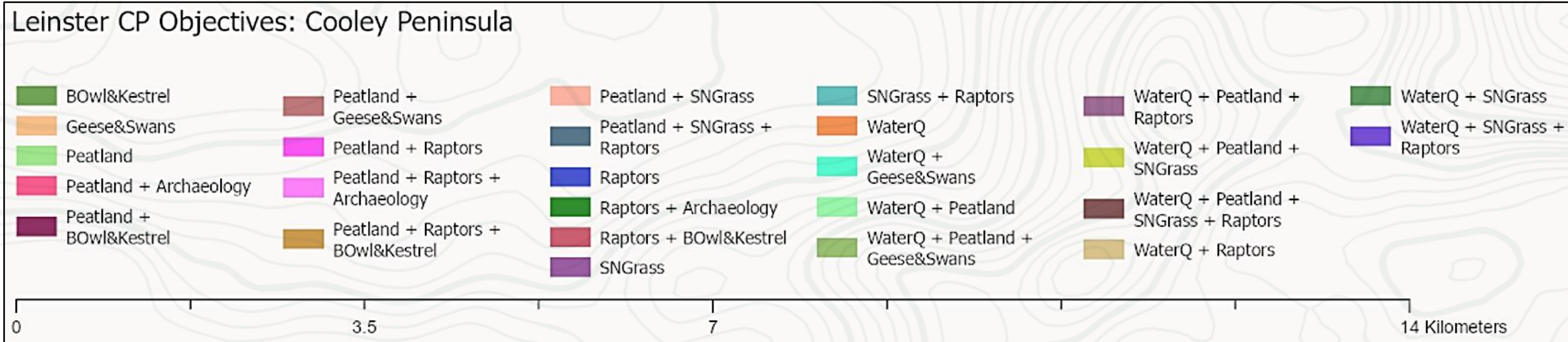
Cooley Local Action Plan - b

1. Water quality
2. Peatland
3. Semi natural grassland
4. Geese & Swans
5. Raptors
6. Barn Owl & Kestrel
7. Archaeology



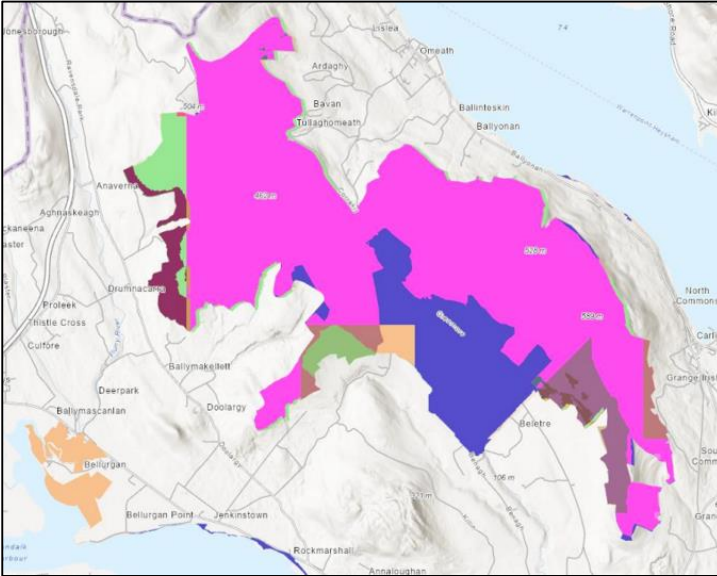
RECOGNISE. SUPPORT. REWARD

Cooley Local Action Plan - d



RECOGNISE. SUPPORT. REWARD

Targeting of actions



LOCAL ACTIONS PLAN

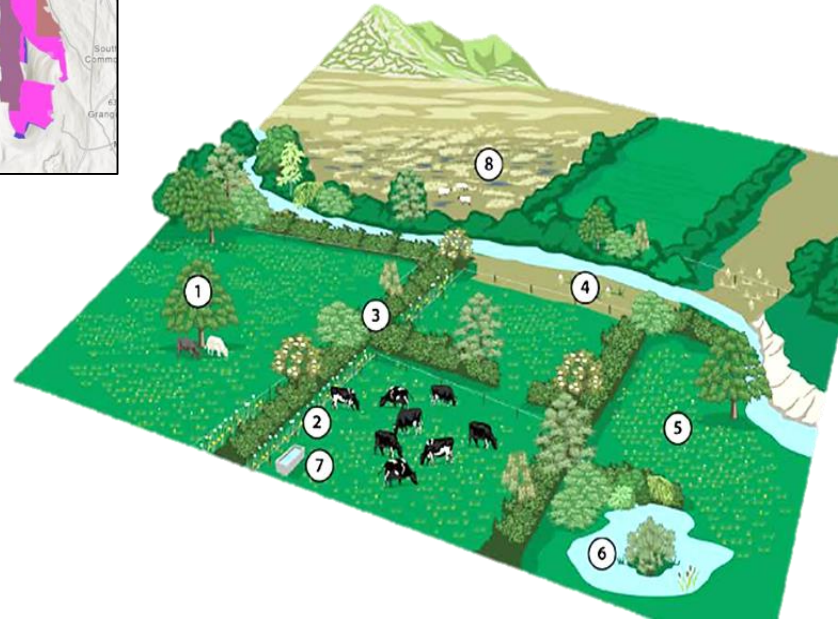


**SCORECARD
RESULTS**

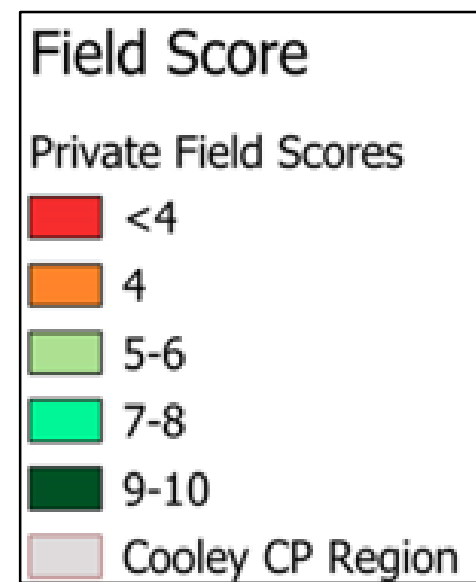


**DATA ON HOW AND
WHERE OBJECTIVES TO BE
DELIVERED**

**PRIORITISE THE RIGHT
ACTION IN THE RIGHT
PLACE**



Private land field scores 2023



Local Action Plan guides the task

Objectives map

1. Raptors
2. Water quality

Overlapping objectives
can also help prioritise
certain actions



Scorecard issues identified

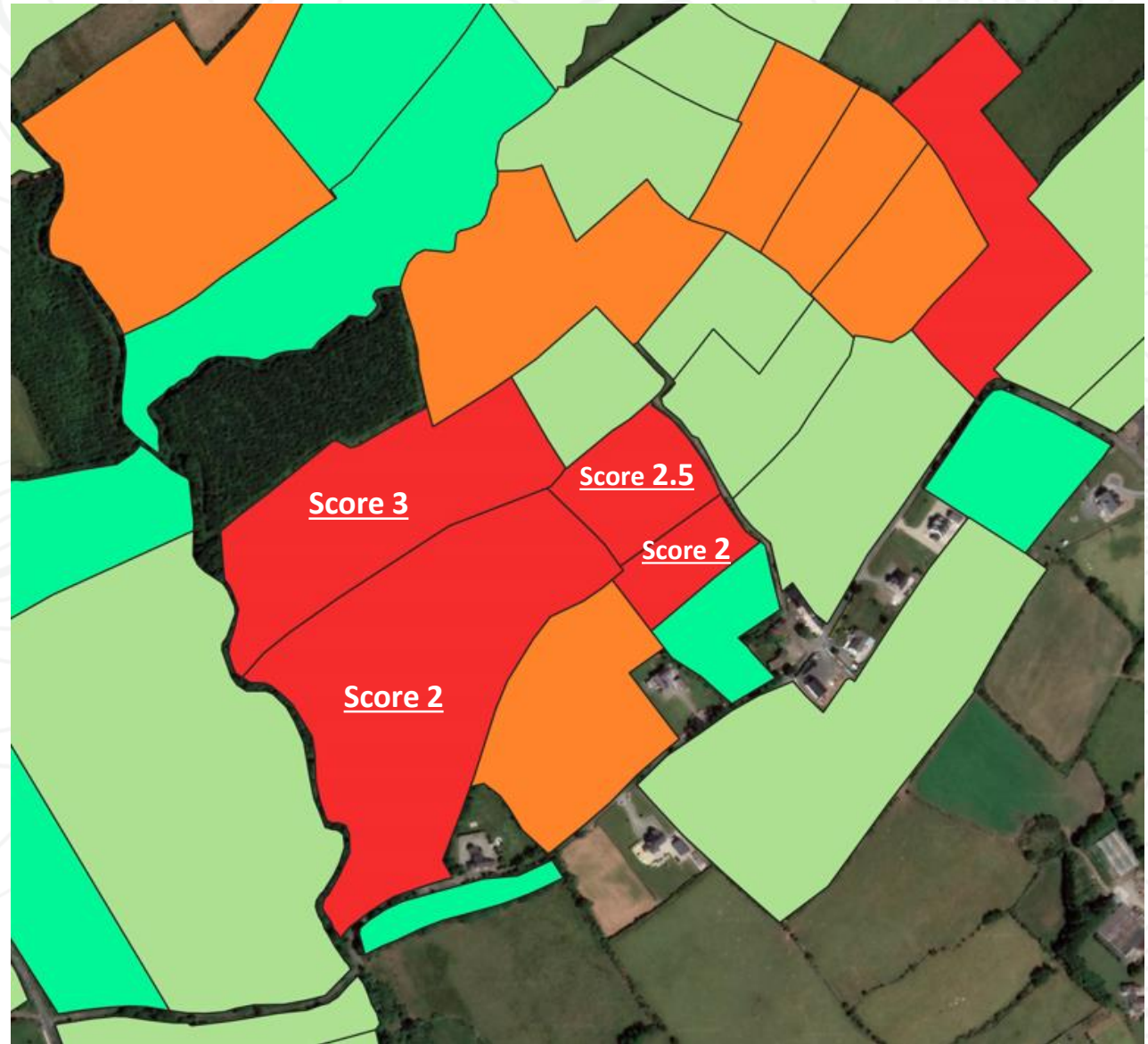
1. Field boundaries
2. Supplementary feeding
3. Water quality

RAPTORS

Improving field boundary quality by; planting trees, new hedgerows, hedgerow rejuvenation
Wild Bird Cover strips NPI ideal action for raptors

WATER QUALITY

Riparian margin an excellent option and the margin would restrict access to watercourses plus other actions like, general fencing, riparian tree planting, hedgerows, water troughs or solar pump



RECOGNISE. SUPPORT. REWARD

4. Innovation

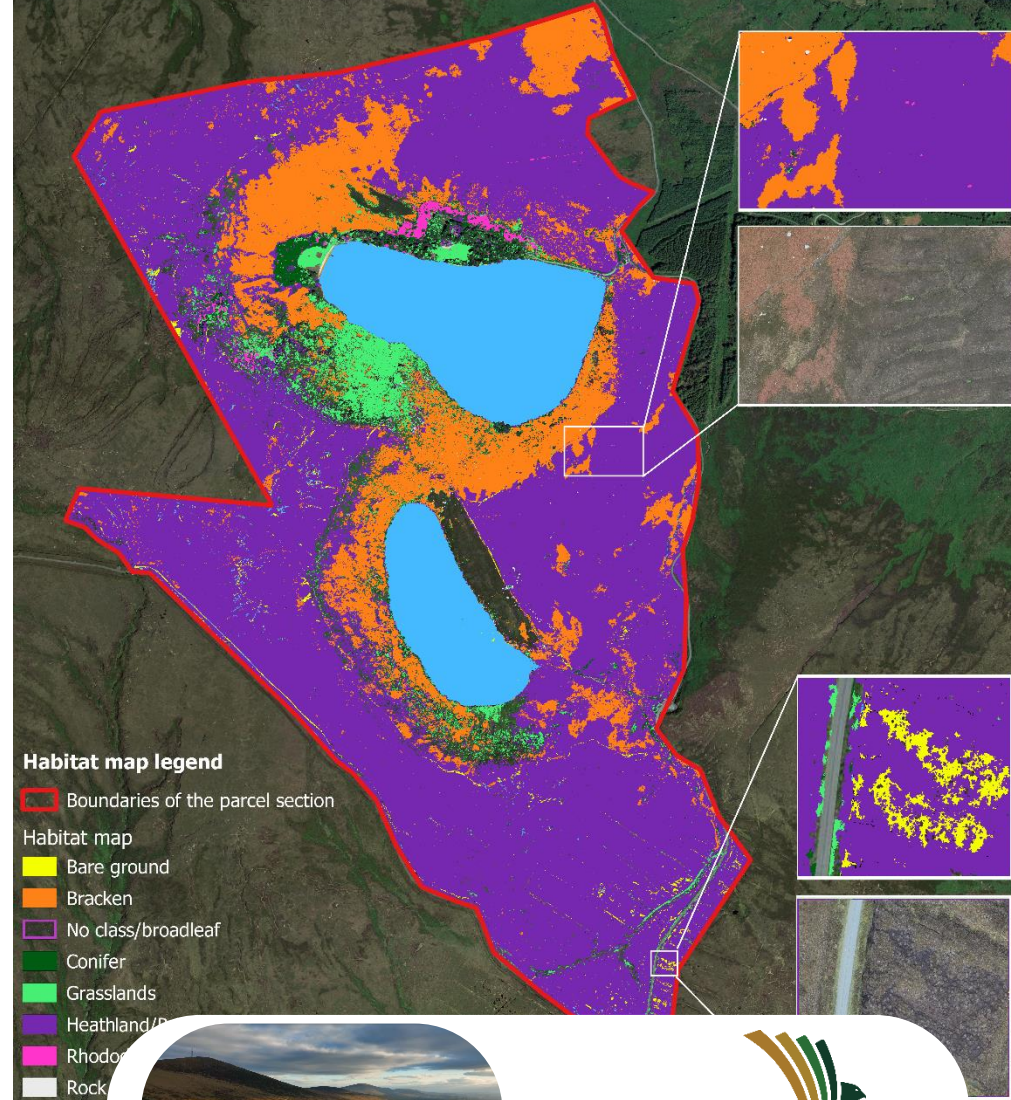
Remote sensing

Drone surveys

- Carried out across all our regions
- Habitat maps created after drone surveys are completed
- Offers huge guidance on the scale and level of specific issues on the uplands
- Focuses Landscape Actions and other restoration activities



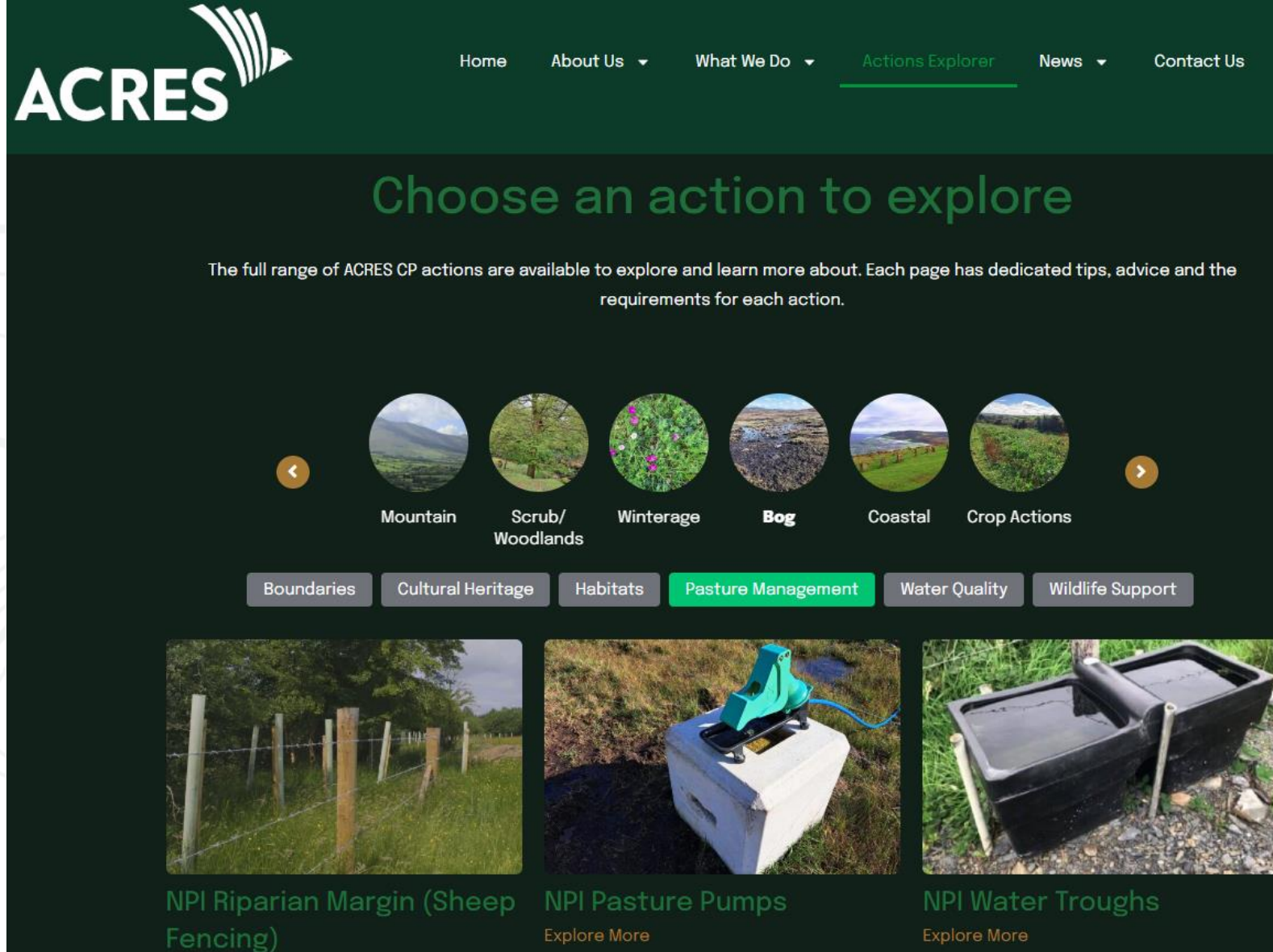
Habitat map obtained from drone imagery for 330 ha of the commonage parcel (Leinster CP zone - Dublin Wicklow Mountains)



4. Innovation

- Actions Explorer to be used for helping advisors and farmers select the right action in the right
- Scorecard data
- Local objectives
- Key in prioritising targeting

[Choose an acres action to explore](#)



The screenshot shows the ACRES website's 'Actions Explorer' page. At the top is the ACRES logo and a navigation menu with links: Home, About Us, What We Do, Actions Explorer (highlighted), News, and Contact Us. The main heading is 'Choose an action to explore'. Below this is a paragraph: 'The full range of ACRES CP actions are available to explore and learn more about. Each page has dedicated tips, advice and the requirements for each action.' A row of six circular images represents different action categories: Mountain, Scrub/Woodlands, Winterage, Bog, Coastal, and Crop Actions. Below these is a row of buttons for various themes: Boundaries, Cultural Heritage, Habitats, Pasture Management (highlighted in green), Water Quality, and Wildlife Support. At the bottom, three featured actions are shown with images and titles: 'NPI Riparian Margin (Sheep Fencing)', 'NPI Pasture Pumps', and 'NPI Water Troughs', each with an 'Explore More' link.



RECOGNISE. SUPPORT. REWARD

Leinster Team



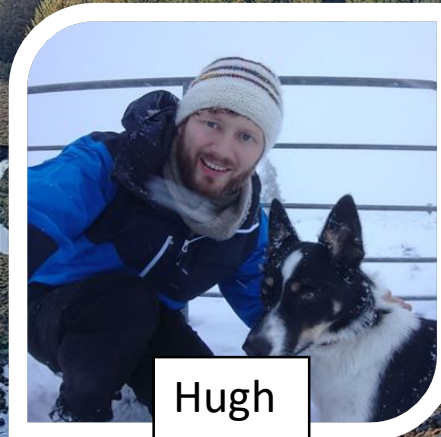
Padraig



Kristina



Brian



Hugh



Shane

Local Blessington Office
Unit 1E
Blessington Business Park
Blessington
Co Wicklow

Central Office
Unit 2, Oran Point
Main St
Oranmore
Co Galway

Tel: 091 792 865
Email: info@acresleinster.ie





*Thanks for
listening*