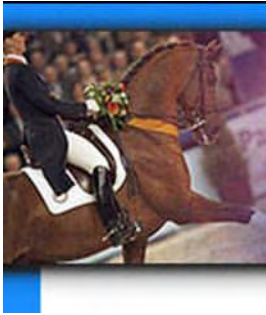


KWPN
Royal Dutch Sport Horse



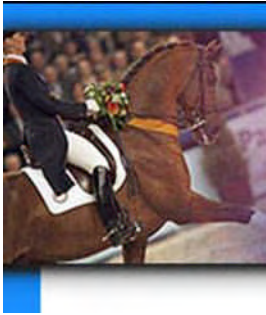
KWPN
Royal Dutch Sport Horse



KWPN Stallion and Mare selection

By Ine van Deurzen

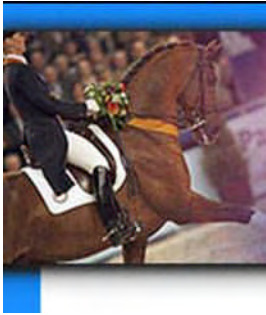
November 2009



KWPN Stallion and Mare Selection

Planning:

- Royal Dutch Sport Horse (KWPN)
- Breeding Goal
- KWPN Stallion and Mare selection
- Future developments



KWPN Stallion and Mare Selection

KWPN = Koninklijk Warmbloed Paardenstamboek Nederland
Royal Dutch Sporthorse

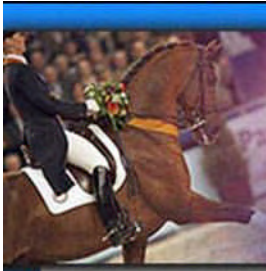
30.000 members

10.000 active breeders

15.000 registered coverings

app. 200 approved KWPN Stallions



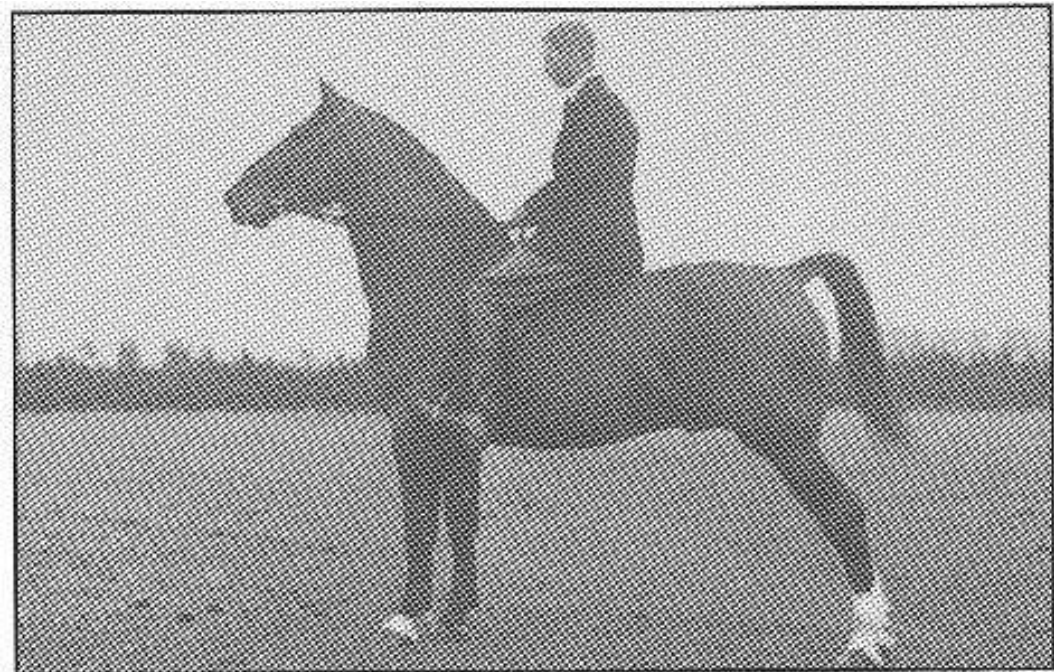


History

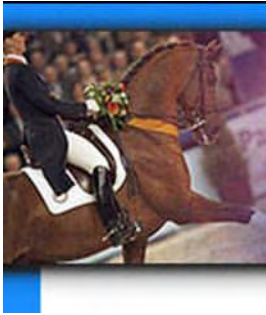
KWPN Stallion and Mare Selection



Drie afstammelingen van één merrie voor zelfbinder zonder motor in tarweveld



De vroeg moderne hengst uit de 30-40er jaren.
OT VAN WITTENSTEIN 62 GPS v. Reveil (Norm.)
M.C.-hengst.
In het zadel: P.B. van Binsbergen.



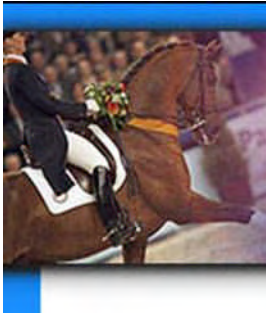
KWPN Stallion and Mare Selection

3 Breeding directions:

Riding type (RP) (jumping (SP) / dressage (DP))

Harness Horses (TP)

Gelder Horses (GP)



KWPN Stallion and Mare Selection

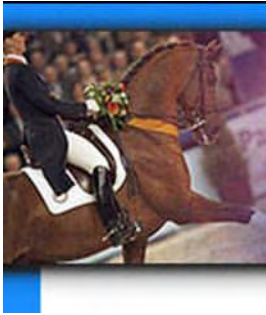
The KWPN Riding type

Jumping



Dressage

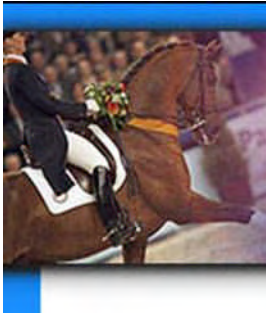




The KWPN Harness type

KWPN Stallion and Mare Selection

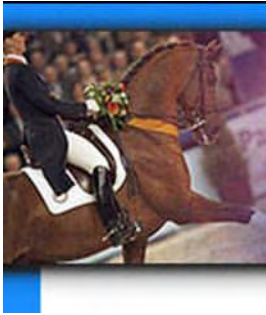




KWPN Stallion and Mare Selection

The KWPN Gelder type





WBFSH Rankings 2009: Jumping: KWPN number 1!

Gold Hickstead



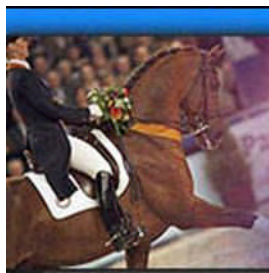
Silver Ninja la Silla



OG Beijing
2008

Bronze Authentic





WBFSH Rankings 2009: Jumping: KWPN number 1!



Hickstead (Hamlet x Ekstein)

Eric Lamaze

Nr. 1



Robin Hood W (Animo x Libero H)

Ben Maher

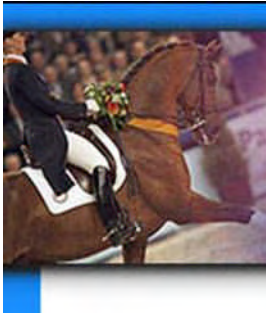
Nr.2



Okidoki (Jodokus x Topas)

Albert Zoer

Nr.5



WBFSH Rankings 2009:

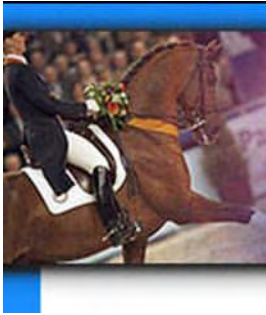
Dressage: KWPN the best!

Parzival
(v.Jazz)
Nr. 1



Totilas
(v.Gribaldi)
Nr. 3



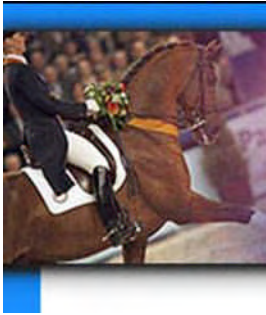


KWPN Stallion and Mare Selection

KWPN Breeding goal

The general KWPN Breeding goal is to produce a performance horse that:

- can perform at **Grand Prix** level;
- has a **constitution** that enables long usefulness;
- has a **character** that supports the will to perform as well as being agreeable and good natured towards people;
- has **functional conformation and a correct movement mechanism** that will enable good performance;
- has an **attractive exterior** that is related to refinement, nobility and quality.



KWPN Stallion and Mare Selection

As from 1st jan 2006: SPECIALIZATION IN RIDING TYPE HORSE

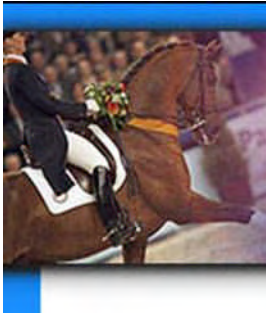
Judging en selection of riding type horses is split into:

Dressage type

and

Jumper type

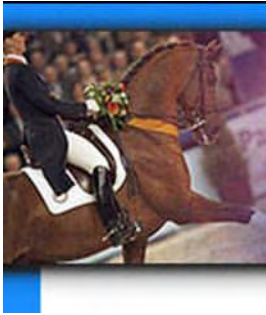
Breeding goal unaltered but extended for dressage and for jumping



KWPN Stallion and Mare Selection

Extended breeding goal Dressage type

The breeding goal is to produce a dressage horse that can perform at Grand Prix level and also possesses a healthy constitution, functional conformation, correct movement mechanism, a correct base, and a preferable attractive exterior.



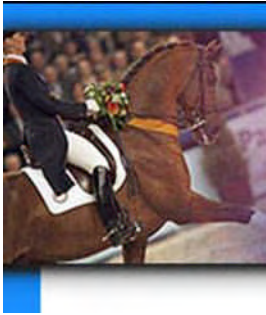
KWPN Stallion and Mare Selection

Extended breeding goal Dressage type

To reach this goal, the dressage horse should be long lined and have a correct model with balanced proportions.

The horse should move correctly, be light footed, be balanced and supple with carrying power, impulsion, and good self-carriage.

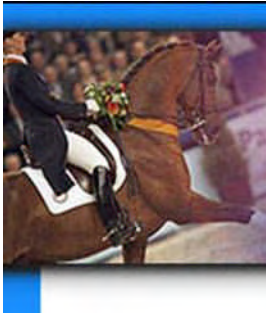
The dressage horse should be easy to handle, easy to ride and intelligent, with a willing and hard-working character.



KWPN Stallion and Mare Selection

Extended breeding goal Jumper type

The breeding goal is to produce a jumper that can perform at Grand Prix level and also possesses a healthy constitution, functional conformation, correct movement mechanism, a correct base and a preferable attractive exterior.



KWPN Stallion and Mare Selection

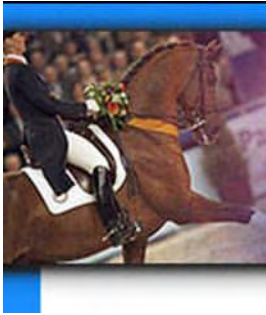
Extended breeding goal Jumper type

To reach this goal, the jumper should be long lined and have a correct model with balanced proportions.

The horse should move correctly, be balanced and supple with self-carriage and impulsion.

Jumps with quick reflexes, is careful, has good technique and has a great deal of scope.

The jumper should be easy to handle, easy to ride and intelligent, with a willing and hard-working character. The jumper has courage.

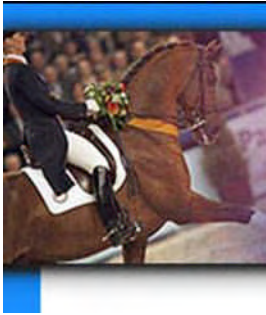


KWPN Stallion and Mare Selection

Standards are made for Dressage and Jumper Horses:

- Conformation
- Movement
- Jumping
- Character

What conformation / movement / jumping / character makes competing the most easy?



KWPN Stallion and Mare Selection

KWPN Stallion and Mare Selection

1) Stallionselection

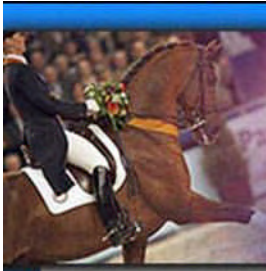
Obligated

feature: Intensive monitoring

2) Mareselection

Stimulation by predicate system

feature: Detailed studbook-entry



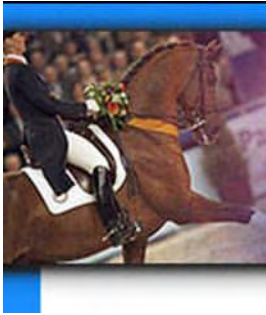
Which stallion is the best? KWPN Stallion and Mare Selection



Many horses

Many traits

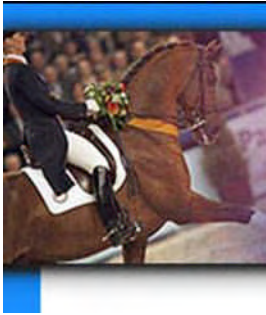
How to report?



KWPN Stallion and Mare Selection

KWPN Stallion selection

- Stallion Selection Committee (SSC)
- first, second and third inspection
- veterinary surgeon (X-ray, roaring, clinical, semen)
- performance test
- monitoring offspring (foals, 3 yr. olds, 7 yr. olds, 11 yr. olds)



KWPN Stallion and Mare Selection

KWPN Stallion selection

First stallion inspection

about 700 stallions (mainly KWPN, German, French, others)

December (around 10 days)

Conformation

Hard surface:

walk, trot

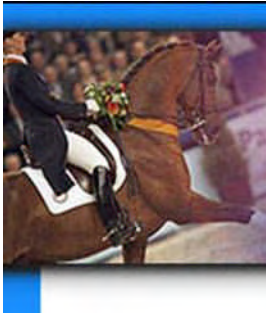
Dressage horses:

free movement

Jumping horses:

free movement and free jumping

At the end of the assesment, the SSC will announce if the stallion is selected for the second inspection or not.



KWPN Stallion and Mare Selection

KWPN Stallion selection

Second stallion inspection

about 180 - 200 stallions

February, KWPN Stallion Show 's Hertogenbosch

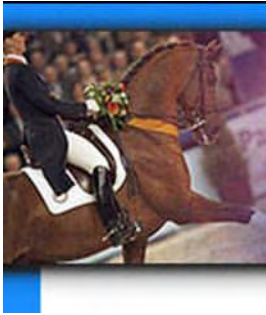
Conformation

Dressage horses: free movement

Jumping horses: free movement and free jumping

Very important: Additional pedigree information

At the end of the assesment, the SSC will announce if the stallion is selected for the third inspection or not.



KWPN Stallion and Mare Selection

KWPN Stallion selection

Third stallion inspection

about 80 - 100 stallions

February, KWPN Stallion Show 's Hertogenbosch

In hand presentation

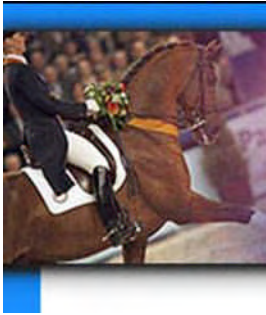
Conformation

Talent

Pedigree

Health

At the end of the assesment, the SSC will announce if the stallion is selected for the performance test or not.



KWPN Stallion selection

KWPN Stallion and Mare Selection

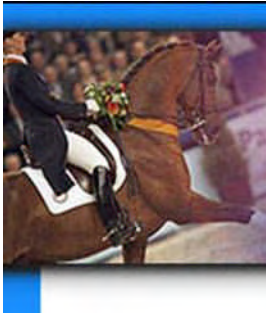
Veterinary inspection

Between first and second inspection (*needs to be ok for third inspection*)

- Clinical inspection
- X-rays
- Roaring
- Genetical organs

After 3rd inspection

- Semen quality



KWPN Stallion selection

KWPN Stallion and Mare Selection

Performance test

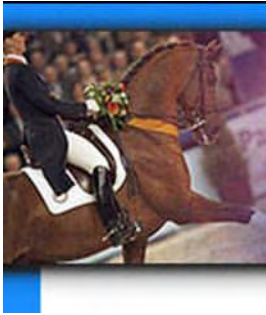
Testing the ability for dressage and show jumping

Uniform environmental conditions

- 1 location (Stegeren)
- 1 team assembled by KWPN

- head of training
- riders
- stable manager
- grooms

Length 70/50/21/5 days



KWPN Stallion selection

KWPN Stallion and Mare Selection

Performance test

Final report:

1. marks

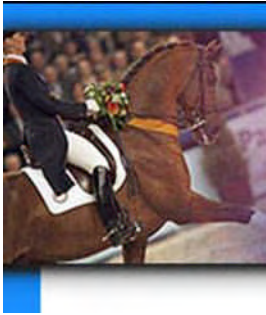
- Dress: walk, trot, canter, suppleness, posture and balance, rideability and workability, talent for dressage
- Jump: walk, trot, posture and balance, canter, reflexes, technique, power, attitude and rideability, talent for jumping

2. report of the mother

3. veterinary report

4. stable behaviour

About 20-30 out of 80 stallions pass the exam



KWPN Stallion selection

KWPN Stallion and Mare Selection

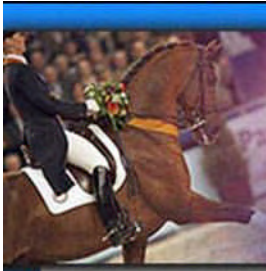
Monitoring Offspring

Inspection of foals

Inspection (breeding values) on:

- 3-year olds (conformation)
- 7-year olds (conformation and performance)
- 11-year olds (performance)

Stallions can be put on wait / disapproved at these moments



Which mare is the best?

KWPN Stallion and Mare Selection

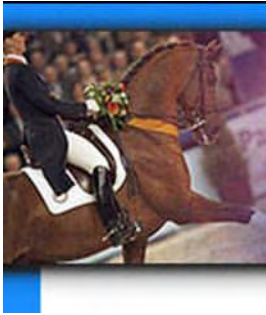
Mareselection:

No real selection

Give information

Judging young horses / Studbookentry / Predicates

feature: Detailed studbook entry



KWPN Stallion and Mare Selection

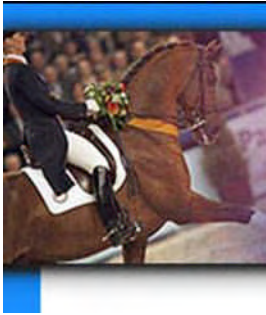
Mareselection:

Predicates:

ster, keur, elite, sport, EPTM/IBOP, Prok

Based on off-spring:

preferent, prestatie



KWPN Stallion and Mare Selection

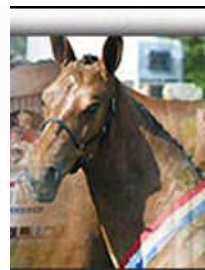
Mareselection:

Studbookentry

Keurings Standards

Report is made by judges

- for the owner or the mare
- a kopy for the studbook



HEARTBREAKER

KENMERKEN SPORT

fokwaarde springen 168

betrouwbaarheid % 94

leeftijd oudste

nakomelingen in de sport
10 jr e.o.

fokwaarde dressuur 104

betrouwbaarheid % 67

KENMERKEN BOVENBALK

exterieur

beweging

hoogtemaat

BTBH % ext. en bew.

112

105

-2,61

94

vrij springen

115

BTBH % spr.

95

KENMERKEN ONDERBALK

romp: model

romp: richting

rechthoek

opwaarts

109

vierkant

neerwaarts

hoofd hals verb.

halslengte

halsrichting

halsbespierung

hoogte schoft

schouderligging

licht

lang

verticaal

zwaar

hoog

schuin

100

105

97

93

100

89

zwaar

kort

horizontaal

arm

laag

steil

verloop rug

verloop lendenen

kruisligging

kruislengte

strak

strak

hellend

lang

102

103

91

102

week

week

recht

kort

stand voorbeen

stand achterbeen

kootstand

hoefvorm

verzenen

kwaliteit beenw.

omvang beenw.

bokbenig

sabelbenig

week

breed

hoog

hard

zwaar

95

105

113

107

94

81

107

hol

steil

steil

smal

laag

voos

fijn

stap: ruimte

stap: correcth.

draf: ruimte

draf: souplesse

draf: kracht

draf: balans

galop: ruimte

galop: afdruk

galop: balans

lang

toontredend

lang

soepel

krachtig

dragend

ruim

krachtig

dragend

104

109

105

98

92

97

97

84

86

kort

frans

kort

stug

slap

duwend

kort

slap

duwend

afdruk: richting

afdruk: snelheid

techniek: voorb.

techniek: rug

techniek: achterh.

vermogen

souplesse

voorzichtigheid

naar boven

vlug

gevouwen

rond

open

veel

veel

voorzichtig

84

78

81

87

86

89

78

82

naar voren

traag

gestrekt

hol

vast

weinig

weinig

onvoorzichtig

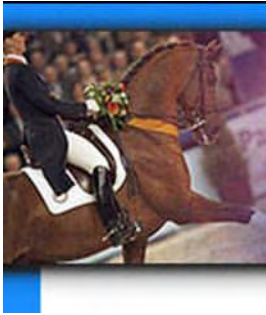
-91 92-95 96-99 100 101-104 105-108 109+

Heartbreaker preferent

(Breeding values 2008/2009)

Jumping: 168 94%

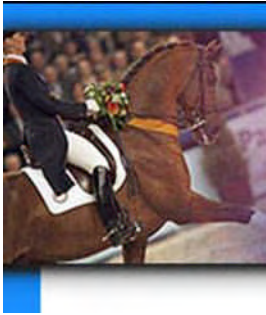
Dressage: 104 67%



KWPN Stallion and Mare Selection

Future Developments:

1. Keep on Selecting
2. Innovation
4. Specialization
5. Sales Promotion



KWPN Stallion and Mare Selection

