



AGRICULTURE AND FOOD DEVELOPMENT AUTHORITY

The Irish Agriculture and Food Development Authority

Enterprise Research in Teagasc

Dr. Kevin Heanue

Teagasc Rural Economy and Development Programme (REDP)

ISBE Conference, 2012

Croke Park, Dublin

November 8th, 2012

Outline

- Who are we?
- What do we do?
- Enterprise research in Teagasc
 - Some examples
 - Policy framework and issues

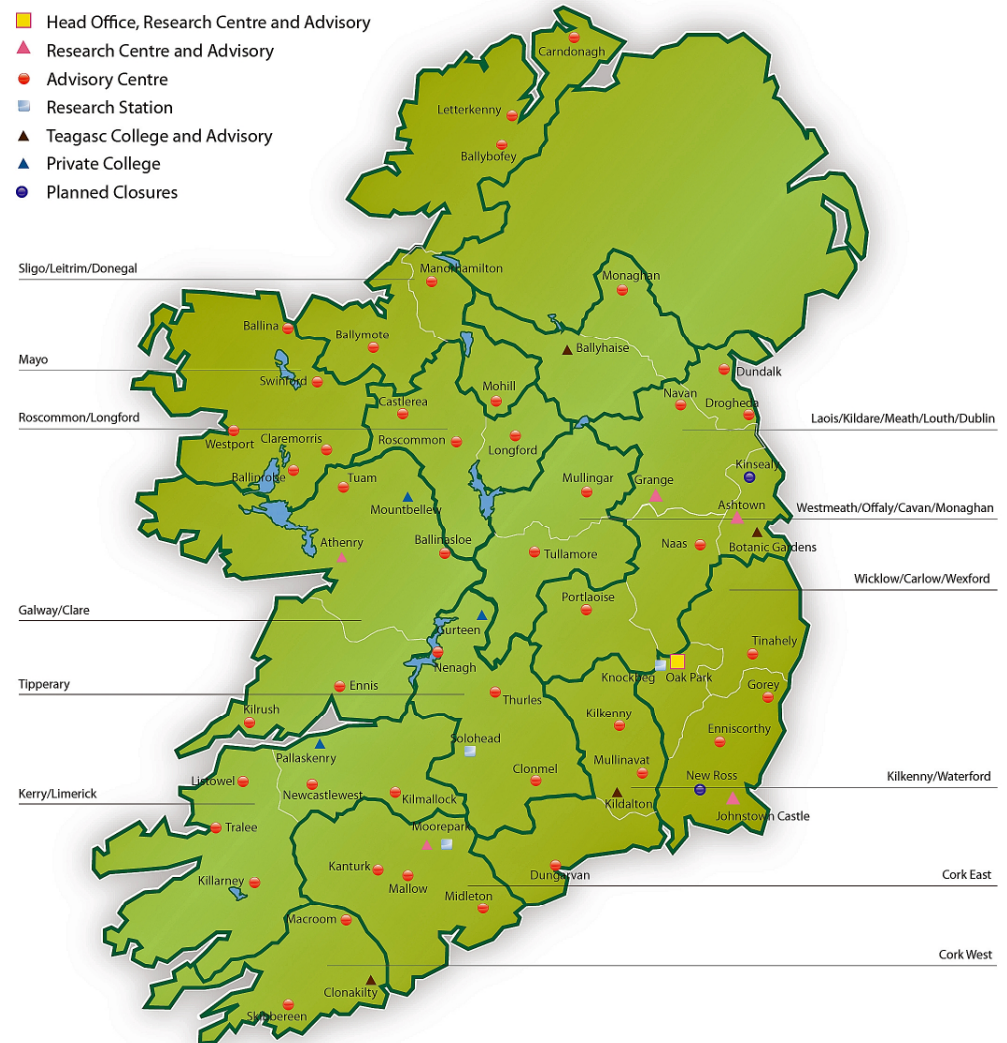
Who are we?

- Teagasc – the Agriculture and Food Development Authority – is the national body providing *integrated research, advisory and education services* to the agriculture and food industry and rural communities.(www.teagasc.ie)
- Importance of Agri-Food sector in Ireland
 - **7.7 percent** of total employment
 - over **50 percent** of exports by indigenous manufacturing industries.
 - **40** percent of net foreign earnings from merchandise exports.
- Teagasc's Mission

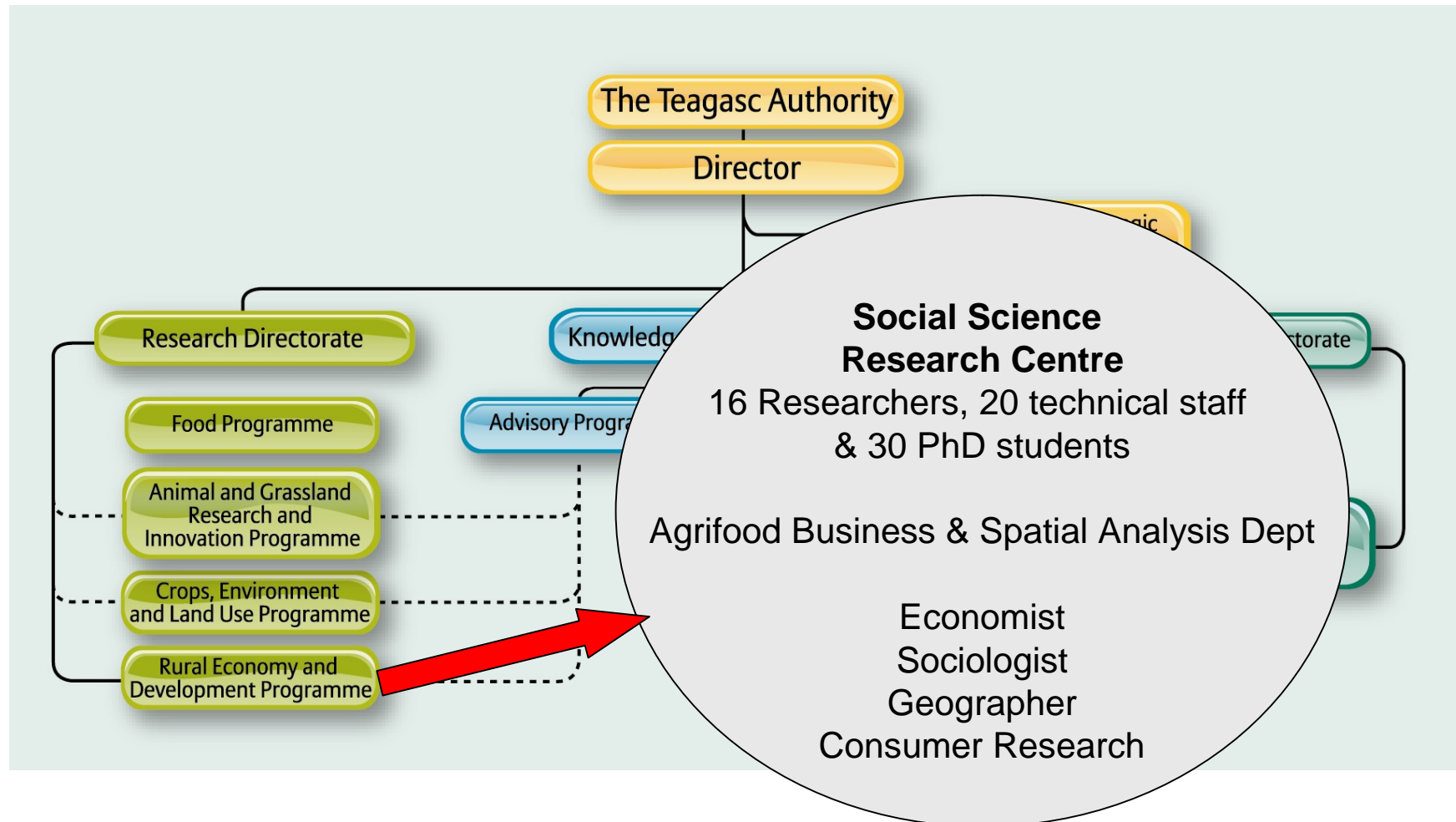
“To support science-based innovation in the agri-food sector and broader bio economy so as to underpin profitability, competitiveness, and sustainability”.

Who are we?

- 1,189 employees at 60 locations
- Annual operating budget in excess of €160 million.
- Some 40% of the budget is devoted to research
- Research services are provided by 120 research scientists at seven dedicated centres



What do we do?



Some research examples

- Agriculture
 - Innovation within farm businesses
 - Diversification of farm businesses
 - Management capabilities of:
 - existing businesses
 - new entrants to farming
 - Agricultural Knowledge and Innovation System (AKIS)
- Food companies
 - Innovation networks
 - Impact of regulatory and technological environment on firm growth
 - Impact of supply chain on the development of firms
- Broader rural economy
 - Niche innovation for micro enterprises (Cultural Tourism – EU Northern Periphery Programme funded)
 - Organisational innovation (Federated cooperatives) for small producers
 - Assessing aspects of rural enterprise support programmes (LEADER)
- Commission on Economic Development of Rural Areas (CEDRA)
 - Secretariat; research input

Policy framework and issues

- 'Smart Economy'
 - combines the successful elements of the enterprise economy and the innovation or 'ideas' economy while promoting a high-quality environment, improving energy security and promoting social cohesion
 - FoodHarvest 20202 – 'Smart, Green, Growth'
- Ever present issues
 - High tech/low tech
 - Indigenous/ foreign
 - Role of SME's
 - Rural Enterprise
 - White Paper on Rural Development 1999
 - LEADER programme

Thanks

Questions/comments?

Kevin.Heanue@teagasc.ie