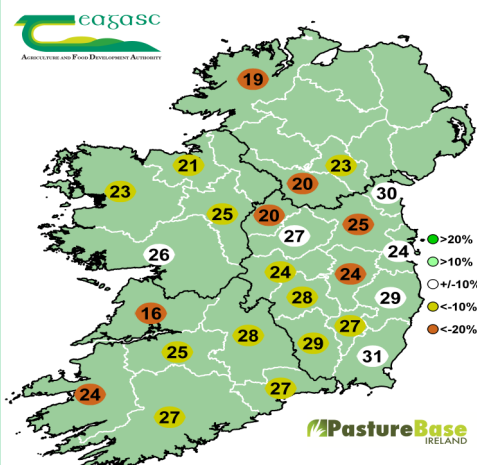


27th October 2020

PastureBase
IRELAND

AFC	Stocking Rate	Cover/LU	Growth	Demand	Pregrazing Yield
704 kg DM/ha	2.7 LU/ha	260 kg DM/LU	25 kg DM/ha	31 kg DM/ha	1720 kg DM/ha

Grass growth measurement
Today's grass growth (kg DM/ha/day)



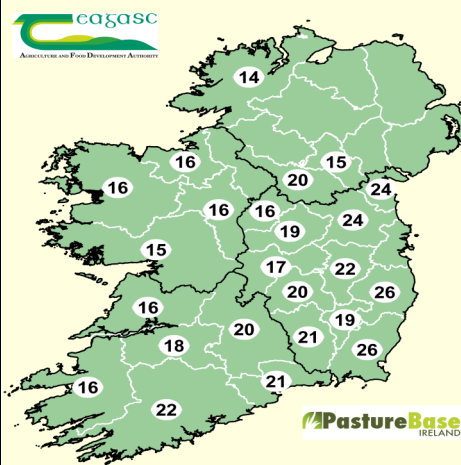
On the left: counties map showing **current** grass growth rates over the last week.

On the right: counties map showing **predicted** grass growth over the next 7 days from farms involved in Elodie Ruelle's MoSt grass growth model (55 farms).

Predicted Growth Rate:

Ballyhaise 19kg DM/ha
South Wexford 19 kg DM/ha
Athenry 15 kg DM/ha
Clonakilty 21 kg DM/ha

Grass growth predictions
Next week (kg DM/ha/day)



Farms on Track to have over 60% closed this week

Data from PastureBase Ireland shows **farmers that measured in the past week have 54% of their farm closed**. This is estimated to be around 65% by 1st Nov.

By 1st Nov: dry farms should have 60% of the farm closed.
Heavy soils farms and higher stocked farms should have 70-80% closed.

If ahead of target reduce grazing area and increase supplementation. If behind target graze lighter covers, remove silage from diet, and increase demand by letting other stock graze.

Do NOT let AFC drop below 500 kg DM/ha. This is detrimental for grass growth on the farm. Remember grass grows grass. Consult your PastureBase grass budget and update your plan if necessary.

If AFC 500 kg DM/ha now, house animals immediately. Walk the farm again in 2-3 weeks to decide if another paddock should be grazed. Don't start spring on the backfoot by continuing to graze now.

Good use of temporary fencing on the farm of Grass10 course member **Denise Weeks in Co. Limerick**



Grass DM

16.8 %

Moorepark @ 9am

(1600 kg/DM/ha & dry)

Heavy Rain Challenging Grazing

Heavy rainfall, mainly in the west, is causing difficult grazing conditions. What can we do to maintain grass in the diet? Revert to our Spring grazing rules.

- **Walk the farm daily** to identify dry areas to graze, this may be only be certain sections of paddocks.
- Graze paddocks on the farm that have good access and easy exit back onto farm roadways. **Spur roadways are great to get animals to the back of paddocks.**
- **12 hour allocations with a back fence** to avoid damaging what has been previously grazed.
- **On—off grazing** for 3 hours AM and PM and then standing them off during more sustained spells of rain
- Animals should be grazing **medium covers** of (1200 to 1500kg/DM/ha) and 8-10 cm on drystock farms.

Now is an ideal time to apply K. See table below for rates required for maintenance and build up for grazing.

Uptake of K Driven By Grass Utilised	K (kg/ha)
1 T DM/ha	25
14 T DM/ha	350
Utilised @ 80% => 11 T DM/ha	275
K Retained by animal (not excreted as dung or urine)	10%
K Removed By Grazing (maintenance)	28
Soil Index 2 (above maintenance)	+ 30
Soil Index 1 (above maintenance)	+ 60

27th October 2020

Autumn Closing Plan Update— Kevin Moran

At the start of October, Kevin Moran gave us a run down of his Autumn grazing plan. Kevin milks a herd of 263 spring calving cows on a 90.5 Ha milking platform in Caherlistrane, Co. Galway, less than 5 minutes from the Mayo/Galway border. Kevin is reasonably happy with how grazing has gone as we look towards the 1st November.

“October has gone fairly smoothly up to now, however weather has made things challenging in the last week. From tonight the cows will be in at night, being offered 7kg silage per cow, 8 kg of grass during the day and 2kg meal in the parlour.

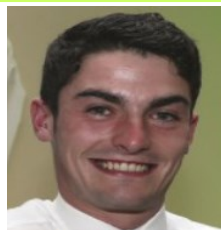
Kevin remarked the key to grazing during November is **on - off grazing**.

“The cows get out for 3 hours during the day when the weather is challenging and they are brought back into the shed to minimise damage”

Kevin has 56% of the farm grazed to the 26th October so he will be slightly ahead of his target for 60% on the 1st November. Kevin added “ I am not concerned about being slightly ahead of my target, I have good quality baled silage in the yard and if the forecast is correct, heavy rainfall may mean I might struggle to graze much ground over the weekend.

Kevin Moran's Autumn rotation planner

WEEK	TARGET HA GRAZED/DAY	TARGET HA GRAZED BY WEEK END	ACTUAL HA GRAZED BY WEEK END	TARGET %	ACTUAL %
06/10/2020 - 12/10/2020	1.94	13.58	17.21	15	19
13/10/2020 - 19/10/2020	1.94	27.15	29.13	30	32
20/10/2020 - 26/10/2020	1.94	40.73	50.84	45	56
27/10/2020 - 02/11/2020	1.94	54.30		60	
03/11/2020 - 09/11/2020	1.94	66.97		74	
10/11/2020 - 16/11/2020	1.81	79.64		88	
17/11/2020 - 23/11/2020	1.81	90.50		100	



Kevin Moran,
Caherlistrane
Co. Galway

Kevin's Current Grass Performance

AFC (Kg DM/Ha)	1004
Cover/LU (Kg DM/LU)	350
Growth (Kg DM/Ha/Day)	37
Demand (Kg DM/Ha/Day)	23
Stocking Rate (LU/Ha)	2.87

Grass Budget

Kevin completed a grass budget on PastureBase and is targeting an Average Farm Cover of 800 kg/DM/ha on the 1st December.

“Keeping an eye on my farm cover with regard to 1st December targets is key. I have a large demand in Spring. I will keep recording measurements on PastureBase during November to stay on target”

Teagasc Grange dairy calf-to-beef systems research update

The current research focus is to compare the performance of three DAIRY-BEEF genetic groups, which consist of **male Holstein Friesian (HF)** and **two Angus (AAX) groups**. The HF group are the progeny of the top 4 EBI sires, while the two AAX groups are the progeny of AA sires divergent in genetic merit for carcass weight and conformation.

Steers were housed for finishing and to reduce grass demand at the end of September, and are currently on a diet of high quality silage (78 DMD) and 5 kg of concentrate/day, silage intake is 7.3 kg Dry matter. Over the second grazing season steers were offered a grass only diet, grazing covers of 1300-1600 kg DM/ha to a residual height of 4cm. Calves will have sufficient grass to continue grazing up to December. Over their 1st grazing season, 2020 born calves achieved an ADG of 0.82 kg and currently weigh 233 kg.

Calves (1st Year)

Steers (2nd Year)

Feed management (1 st grazing season)	15 Sept (kg)	ADG (kg)	14 Oct (kg)	ADG (kg)	Genotype	25 Sept (housing weight) (kg)	2 nd grazing season ADG (kg)	BCS (1-5)
1 (grass only)	201	<u>0.78</u>	234	0.83	HF	486	0.98	2.7
2 (grass + 1 kg con)	210	<u>0.82</u>	232	0.82	HIGH AA	480	1.09	3.0
3 (grass + 1 kg con)	216	<u>0.86</u>	232	0.82	LOW AA	478	1.01	3.1

Grass Growth in 2020

All 3 farmlets in the study have grown 12.4 T grass DM/ha so far in 2020. The farm is walked weekly and measurements recorded on PastureBase.

Summary

Nicky Byrne of Teagasc

Grange concludes that “Grazing high quality grass, at the correct cover results in high levels of ADG. Calf performance is similar YTD for all treatments, with grass only calves performance being compensated since the reintroduction of meal from 15 September”