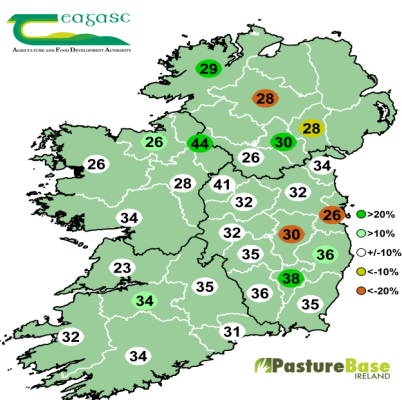


13th April 2021

PastureBase
IRELAND

AFC	Stocking Rate	Cover/LU	Growth	Demand	Grass/Meal/Silage
753 kg DM/ha	3.3 LU/ha	230 kg DM/LU	34 kg DM/ha	42 kg DM/ha	12.5kg/4kg/1kg

Grass growth measurement
Today's grass growth (kg DM/ha/day)



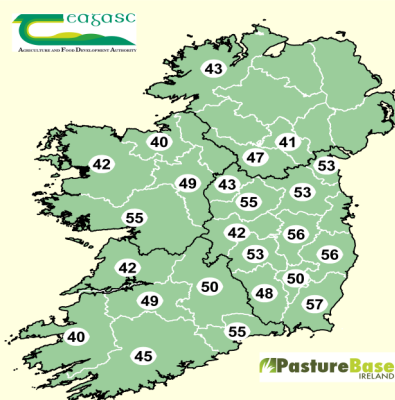
On the left: counties map showing **current** grass growth rates over the last week.

On the right: counties map showing **predicted** grass growth over the next 7 days from farms involved in Elodie Ruelle's MoSt grass growth model (55 farms).

Predicted Growth Rate:

Ballyhaise 50 kg DM/ha
South Wexford 45 kg DM/ha
Athenry 40 kg DM/ha
Clonakilty 45 kg DM/ha

Grass growth predictions
Next week (kg DM/ha/day)



Anticipating an increase in grass growth this week in Co. Wexford

Seamus Sweeney farms near Boolavogue in Co. Wexford, milking 112 cows on a 36ha milking platform. Seamus started the 2nd rotation on the 3rd April having begun grazing on the 25th January.

Seamus is currently feeding cows 14 kg DM grass plus 4 kg meal, (demand 50 Kg DM/ha/day). The farm is growing 35 Kg DM/ha/day. This means that the AFC will drop 105 kg DM/ha this week.

"I stretched grass after St. Patrick's day by grazing silage ground as regrowth was slow, but the good growth over the last days of March drove AFC to nearly 1000 kg DM/ha. I thought I had overdone it and would have to skip some paddocks. But the cold weather dropped growth back well below demand, and I have been eating into this cover over the past fortnight."

AFC was 842 Kg DM/ha on 9th April which he estimates will drop close to 700 kg DM/ha at the next farm walk again this Friday. Whilst grazing heavy covers, Seamus has been using 12hr strip wires to ensure good cleanouts.

Seamus's plan over the next 10 days is to get the AFC to 600-700 Kg DM/ha and the Cover/LU to 180 Kg DM/LU. "Once my AFC drops back to 600-700, I will hold it there by matching growth with demand."



Seamus Sweeney

Grass Dry Matter %

Moorepark, Co. Cork

19.2% (1500 Kg DM/ha)

Grange, Co. Meath

18.5% (1500 Kg DM/ha)

Athenry, Co. Galway

17.5% (1400 Kg DM/ha)

Grazing 1400Kg DM/ha every day during the summer!

Seamus says his goal from now on is to graze covers of 1200-1400 Kg DM/ha to get as much milk solids from grass.

Cows are currently milking 31.5L and producing 2.4 Kg Milk solids per cow. Seamus has a total of 75 units of N/ac applied on the milking platform so far in 2021.

Caroline Walsh, Overall & Dairy Category winner of the 2020 Grassland Farmer of the Year will take over our social media accounts on Wednesday 21st April along with a live interview at 7.30pm.

This is a great opportunity to hear from Caroline as she takes us through a typical day on her dairy farm and see the attention to detail that crowned her as the overall Grassland Farmer of the Year for 2020. Register here for the live interview in the evening:-

<http://bit.ly/CarolineWalshG10>



Social Media Takeover & Live Interview

Join Caroline Walsh from Ballinascorthy, Co. Cork, Overall and Dairy Category Winner of the 2020 Grassland Farmer of the Year Competition for a social media takeover on Instagram & Twitter, followed by a live interview at 7:30pm.

Register now today!

@Teagasc @TeagascGrass10

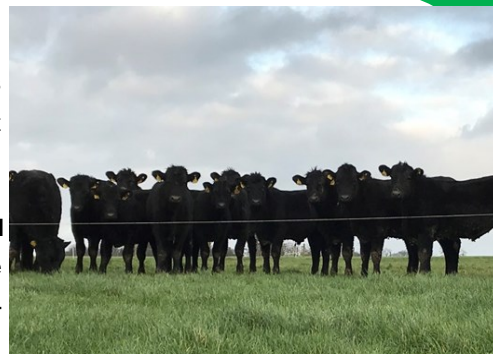
Wednesday, 21st April



Teagasc Grange dairy-beef research herd April Update

With the 1st grazing rotation coming to an end animal and sward performance has been good despite having to rehouse for 6 days during the sustained period of wet weather earlier in March.

Yearling Holstein Friesian (HF) and Angus (AA) steers currently weigh **345 kg** and **346 kg**, respectively, both having achieved an ADG of **0.9 kg** since turnout on the 1st of March. Over the first rotation covers of 1160 kg DM/ha, grazed to a post-grazing height of 4cm, were offered to each group.



The first paddocks of the 2nd rotation have a cover of 1450 kg DM/ha and are of exceptional quality. Average farm cover is 811 kg DM/ha and growth is currently 36 kg DM/ha, behind our demand of 54 kg DM/ha.



Demand has increased as 53% of the farm is closed for 1st cut silage, giving a stocking rate of 4.7 LU/ha (2234 kg LW/ha). Dairy beef systems need to close a large area for 1st cut silage to inflate herd demand in line with growth and to make high quality silage. Silage swards have received 90 units/ac of N in the form of protected urea with P & K coming from slurry (LESS) or 0:7:30.

Suckler cows and calves grazing 2nd rotation grass covers of 1500 Kg DM/Ha on the farm of **Thomas Hogan, Nenagh, Co. Tipperary** in super grazing conditions.

GFOY Update

Thomas Hogan (Cattle-Suckling Category Grassland Award Winner)



"I started my 2nd rotation today and my animals are grazing a cover of 1500 Kg DM/Ha. Growth has been slow over the last week at 30 Kg DM/Ha, however I am happy with my grass situation and silage area will be fertilised tomorrow for a late May 1st cut and dropped off the grass wedge"

Hitting Grazing Targets in 2021 with PastureBase Ireland Webinar 7th April 2021

Thanks once again to everyone for tuning in to our webinar last week.

The key take home messages on the night were:-

- 1) The weekly Grass walk is your key decision making tool
- 2) Set yourself a challenge to complete 3 grazing rotations in the next 60 days
- 3) Graze covers of 1400 Kg DM/Ha every day!

Did you miss the webinar? Not to worry! The webinar can be watched back here in your own time -> <http://bit.ly/GrazingTargets>

Date	13/04/2021
AFC	655 Kg DM/ha
Growth	30 Kg DM/ha/day
Demand	39 Kg DM/ha/day
Stocking Rate	2.97 LU/Ha
Started 2nd Rotation	Today, 13th April
Cover/LU	220 Kg/DM/Ha
PGY	1500 Kg DM/Ha
Fertiliser	23 units Protected N+S after grazing (38N+7S product) per acre
Diet	Grass only



AGRICULTURE AND FOOD DEVELOPMENT AUTHORITY

AGRICULTURE AND FOOD DEVELOPMENT AUTHORITY

AGRICULTURE AND FOOD DEVELOPMENT AUTHORITY

AGRICULTURE AND FOOD DEVELOPMENT AUTHORITY

AGRICULTURE AND FOOD DEVELOPMENT AUTHORITY

AGRICULTURE AND FOOD DEVELOPMENT AUTHORITY

AGRICULTURE AND FOOD DEVELOPMENT AUTHORITY

AGRICULTURE AND FOOD DEVELOPMENT AUTHORITY

AGRICULTURE AND FOOD DEVELOPMENT AUTHORITY

AGRICULTURE AND FOOD DEVELOPMENT AUTHORITY

AGRICULTURE AND FOOD DEVELOPMENT AUTHORITY

AGRICULTURE AND FOOD DEVELOPMENT AUTHORITY

AGRICULTURE AND FOOD DEVELOPMENT AUTHORITY

AGRICULTURE AND FOOD DEVELOPMENT AUTHORITY

AGRICULTURE AND FOOD DEVELOPMENT AUTHORITY

AGRICULTURE AND FOOD DEVELOPMENT AUTHORITY

AGRICULTURE AND FOOD DEVELOPMENT AUTHORITY

AGRICULTURE AND FOOD DEVELOPMENT AUTHORITY

AGRICULTURE AND FOOD DEVELOPMENT AUTHORITY

AGRICULTURE AND FOOD DEVELOPMENT AUTHORITY

AGRICULTURE AND FOOD DEVELOPMENT AUTHORITY

AGRICULTURE AND FOOD DEVELOPMENT AUTHORITY

AGRICULTURE AND FOOD DEVELOPMENT AUTHORITY

AGRICULTURE AND FOOD DEVELOPMENT AUTHORITY

AGRICULTURE AND FOOD DEVELOPMENT AUTHORITY

AGRICULTURE AND FOOD DEVELOPMENT AUTHORITY

AGRICULTURE AND FOOD DEVELOPMENT AUTHORITY

AGRICULTURE AND FOOD DEVELOPMENT AUTHORITY

AGRICULTURE AND FOOD DEVELOPMENT AUTHORITY

AGRICULTURE AND FOOD DEVELOPMENT AUTHORITY

AGRICULTURE AND FOOD DEVELOPMENT AUTHORITY

AGRICULTURE AND FOOD DEVELOPMENT AUTHORITY

AGRICULTURE AND FOOD DEVELOPMENT AUTHORITY

AGRICULTURE AND FOOD DEVELOPMENT AUTHORITY

AGRICULTURE AND FOOD DEVELOPMENT AUTHORITY

AGRICULTURE AND FOOD DEVELOPMENT AUTHORITY

AGRICULTURE AND FOOD DEVELOPMENT AUTHORITY

AGRICULTURE AND FOOD DEVELOPMENT AUTHORITY

AGRICULTURE AND FOOD DEVELOPMENT AUTHORITY

AGRICULTURE AND FOOD DEVELOPMENT AUTHORITY

AGRICULTURE AND FOOD DEVELOPMENT AUTHORITY

AGRICULTURE AND FOOD DEVELOPMENT AUTHORITY

AGRICULTURE AND FOOD DEVELOPMENT AUTHORITY

AGRICULTURE AND FOOD DEVELOPMENT AUTHORITY

AGRICULTURE AND FOOD DEVELOPMENT AUTHORITY

AGRICULTURE AND FOOD DEVELOPMENT AUTHORITY

AGRICULTURE AND FOOD DEVELOPMENT AUTHORITY

AGRICULTURE AND FOOD DEVELOPMENT AUTHORITY

AGRICULTURE AND FOOD DEVELOPMENT AUTHORITY

AGRICULTURE AND FOOD DEVELOPMENT AUTHORITY

AGRICULTURE AND FOOD DEVELOPMENT AUTHORITY

AGRICULTURE AND FOOD DEVELOPMENT AUTHORITY

AGRICULTURE AND FOOD DEVELOPMENT AUTHORITY

AGRICULTURE AND FOOD DEVELOPMENT AUTHORITY

AGRICULTURE AND FOOD DEVELOPMENT AUTHORITY

AGRICULTURE AND FOOD DEVELOPMENT AUTHORITY

AGRICULTURE AND FOOD DEVELOPMENT AUTHORITY

AGRICULTURE AND FOOD DEVELOPMENT AUTHORITY

AGRICULTURE AND FOOD DEVELOPMENT AUTHORITY

AGRICULTURE AND FOOD DEVELOPMENT AUTHORITY

AGRICULTURE AND FOOD DEVELOPMENT AUTHORITY

AGRICULTURE AND FOOD DEVELOPMENT AUTHORITY

AGRICULTURE AND FOOD DEVELOPMENT AUTHORITY

AGRICULTURE AND FOOD DEVELOPMENT AUTHORITY

AGRICULTURE AND FOOD DEVELOPMENT AUTHORITY

AGRICULTURE AND FOOD DEVELOPMENT AUTHORITY

AGRICULTURE AND FOOD DEVELOPMENT AUTHORITY

AGRICULTURE AND FOOD DEVELOPMENT AUTHORITY

Reseeding & Clover Management with PastureBase Ireland

Wednesday, 5th May | 7pm

Join the Grass10 & PastureBase team on the night along with Teagasc Researcher Michael Egan as they discuss:

- How to identify paddocks to reseed on your farm by using PBI
- Why you should include clover in your reseed in 2021
- Using the Pasture Profit Index (PPI) to pick perennial ryegrass varieties for your 2021 reseed
- Management tips to ensure the long term success of the grass/clover reseed
- Entering reseeding events on PastureBase Ireland

Hear from dairy farmer James Barber from Co. Laois on the night about his experience of grass/clover reseeding on his farm

Or visit www.teagasc.ie/grass10