

# The BRIDE Project EIP



**Results based payments and  
how farmers can be rewarded for  
environmental improvement**

<i>Presenter:</i>	<i>Donal Sheehan BRIDE Project Manager</i>
-------------------	--

# Acknowledgements:

- BRIDE Project Administrator
  - Sinéad Hickey
- BRIDE Working Group
  - Daire Ó hUallacháin, Teagasc
  - John Finn, Teagasc
  - Paul Moore
  - Tony Nagle
- Our 42 farmers

*Thank you!*



# BRIDE Project EIP

## *Farming with Nature*



An Roinn Talmhaíochta,  
Bia agus Mara  
Department of Agriculture,  
Food and the Marine



Cork  
County Council  
Comhairle Contae Chorcaí

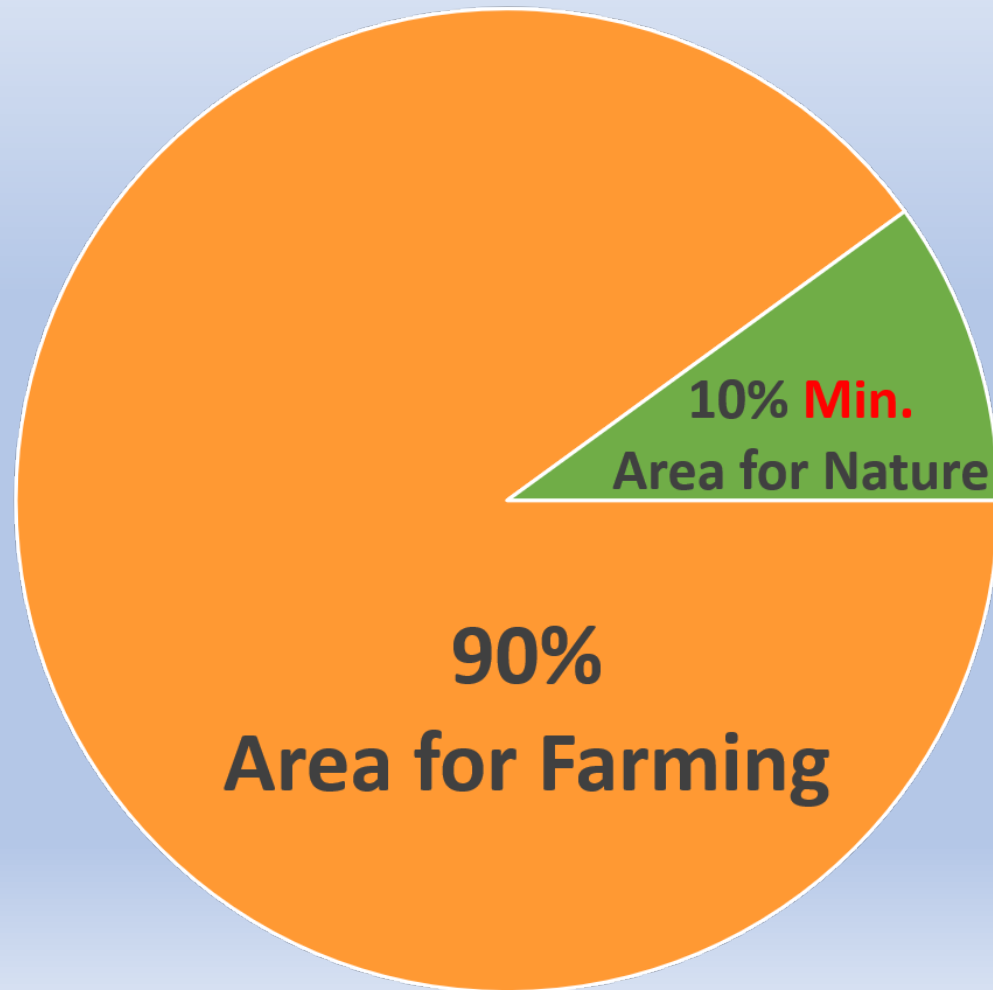


# Why farmland biodiversity is in decline

- Focus for last 50 years on productivity at lowest cost
- Inevitable pinch on environment – more sprays, fertilisers, stock, machinery
- Land is now the new quota, maximising this limiting asset to make an income
- No financial value on the non-productive part of the farm – eligibility/policy. Need to put a value on this
- Agri-environment schemes historically for the extensive farmer – mindset among some intensive farmers is “it’s not for me”. This needs to change as intensive farmers will need to be able to tell a green, sustainable story.
- No encouragement from industry to improve or retain biodiversity at an intensive level



# EU Green Deal / Farm to Fork





**BRIDE Project**  
*Farming with Nature*

The BRIDE Project  
Castletelyons, Co. Cork  
P61 PW18  
(025) 37519/(087) 2292880  
admin@thebrideproject.ie  
www.thebrideproject.ie

FARMER:  
ADDRESS:  
MAIN ENTERPRISE:  
FARMER REF:

2019

No.	BRIDE Project Habitats	SYMBOL	Area-Sq.m	BMA % Rating	Calculated BMA %
1	Bog			1	
2	Coniferous Forest			0.25	
3	Derelict Building / Historic Monument			1	
4	Watercourse/drain		1479	1	0.28
5	Exposed Rock			1	
6	Farmyard		10344	0.3	0.59
7	Field Margin		8169	1	1.56
8	Hedgerow/Treeline		15020	1	2.87
9	Marsh		3119	1	0.60
10	Native Woodland			1	
11	Mixed Woodland			1	
12	Pond			1	
13	Quarry			1	
14	Reed Bed			1	
15	Riparian Buffer Strip		12739	1	2.44
16	Scrub / Wasteground			1	
17	Multi-species Grassland			1	
18	Wet Grassland			1	
19	Winter Stubble			0.05	
TOTAL BMA			5.09 Ha		8.35

% of Biodiversity Managed Area (BMA)

0 - 4

5 - 9

10 +

Total farm area 52.27 Ha/522777 SqM

BMA Habitats occurring 6

BMA% = 8.35%

BMA AREA (Ha) 5.09

## BRIDE Project Environmental Measures

Measure No.	Measure		Capital / Labour Payment	Environmental Benefit
1	<b>Annual Biodiversity Plot</b>			
	Minimum 0.1 ha		€250 (annual payment)	B
2	<b>Bee Scrape (x5)</b>			
	(1m x 0.5m)		€100 (5 x €20)	B
3	<b>Farmyard</b>			
	BRIDE Bat boxes (x2)		€70 (max)	B
	BRIDE Species Specific Bird Boxes (x2)		€220 (max)	B
	Rodenticide Alternative		€60 (max)	B
4	<b>Field Margin</b>			
	First 2m wide x 100m		€50	B, C
	Every subsequent 2m x 100m		€30 (max €500)	B, C
5	<b>Hedgerow (new)</b>			
	First 100m x 2.5 metres		€380	B, C, W
	Every subsequent 100 x 2.5 metres		€100	B, C, W
6	<b>Invasive Species Control</b>			
	Giant Hogweed, Himalayan Balsam, Laurel etc		max €100	B,W
7	<b>BRIDE Multi-species Grassland</b>			B, C, W
	1 hectare		€475	
8	<b>Nettle Patch (x2)</b>			
	(size 2m x 2m)		€40 (2 x €20)	B
9	<b>Native Woodland</b>			
	New Woodland (max 0.1 hectare)		max €415	B, C, W
10	<b>Pollinator Plot</b>			
	Grassland	(200m <sup>2</sup> = 2m x 100metres)	€145	B
	Tillage	(300m <sup>2</sup> = 3m x 100metres)	€175	B
11	<b>Pond</b>			
	New Pond (14m x 14m = 196m <sup>2</sup> )		€450	B, C, W
12	<b>Riparian Buffer Strip Creation - Bride River</b>			
	First 3m wide x 100m		€50	B, C, W
	Every subsequent 3m x 100m		€30 (max €500)	B, C, W
13	<b>Riparian Buffer Strip Creation - Bride Tributary</b>			
	First 2m wide x 100m		€50	B, C, W
	Every subsequent 2m x 100m		€30 (max €500)	B, C, W
14	<b>Tree Line</b>			
	New Tree Line - first 20 trees (2.5m x 100m)		€80	B, C, W
	Every subsequent 20 trees (2.5m x 100m)		€60	B, C, W
15	<b>Farmer Suggested Measure</b>		Measure Dependant (max €250)	



% B.M.A. = % Biodiversity Managed Area = %Habitats



0% B.M.A.





Hedgerows

– 4560m<sup>2</sup>











Hedgerows – 4560m<sup>2</sup>  
Field Margins – 6076m<sup>2</sup>













Hedgerows – 4560m<sup>2</sup>  
Field Margins – 6076m<sup>2</sup>  
Tree-line – 415 m<sup>2</sup>







Hedgerows – 4560m<sup>2</sup>  
Field Margins – 6076m<sup>2</sup>  
Tree-line – 415 m<sup>2</sup>  
Wild Bird Cover – 4815m<sup>2</sup>









Hedgerows – 4560m<sup>2</sup>  
Field Margins – 6076m<sup>2</sup>  
Tree-line – 415 m<sup>2</sup>  
Wild Bird Cover – 4815m<sup>2</sup>  
Skylark Plot – 7040m<sup>2</sup>















Hedgerows – 4560m<sup>2</sup>  
Field Margins – 6076m<sup>2</sup>  
Tree-line – 415 m<sup>2</sup>  
Wild Bird Cover – 4815m<sup>2</sup>  
Skylark Plot – 7040m<sup>2</sup>  
Ponds – 200m<sup>2</sup>





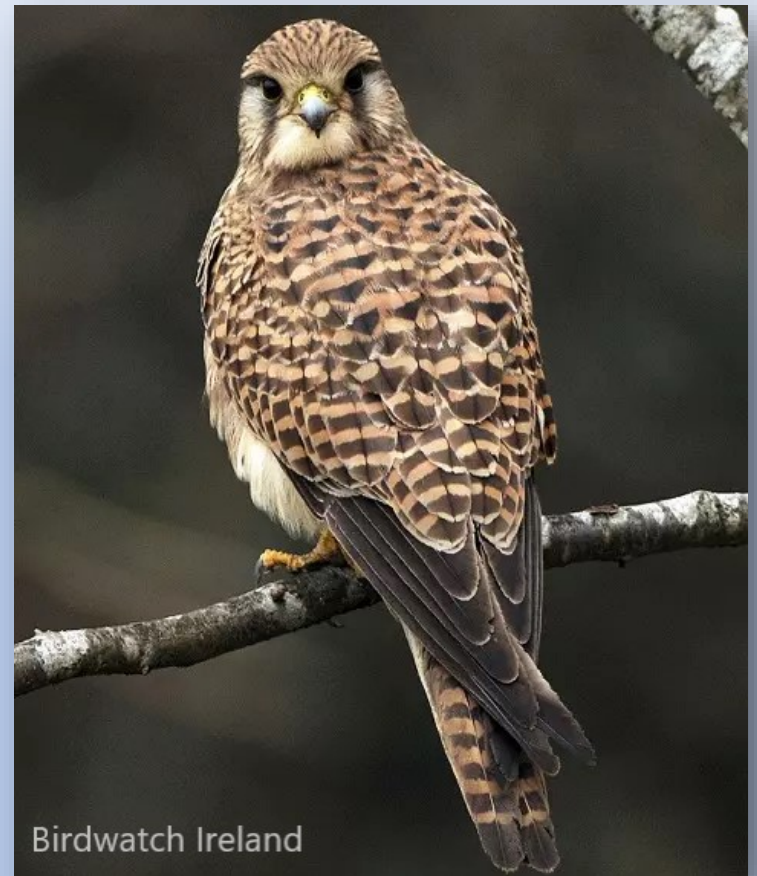




Hedgerows – 4560m<sup>2</sup>  
Field Margins – 6076m<sup>2</sup>  
Tree-line – 415 m<sup>2</sup>  
Wild Bird Cover – 4815m<sup>2</sup>  
Skylark Plot – 7040m<sup>2</sup>  
Ponds – 200m<sup>2</sup>  
Rough Grassland – 1000m<sup>2</sup>



Barn Owl



Birdwatch Ireland

Kestrel



BirdWatch Ireland

Hen Harrier



Hedgerows – 4560m<sup>2</sup>  
Field Margins – 6076m<sup>2</sup>  
Tree-line – 415 m<sup>2</sup>  
Wild Bird Cover – 4815m<sup>2</sup>  
Skylark Plot – 7040m<sup>2</sup>  
Ponds – 200m<sup>2</sup>  
Rough Grassland – 1000m<sup>2</sup>  
Oak Woodland – 320m<sup>2</sup>









Hedgerows	– 4560m <sup>2</sup>
Field Margins	– 6076m <sup>2</sup>
Tree-line	- 415 m <sup>2</sup>
Wild Bird Cover	– 4815m <sup>2</sup>
Skylark Plot	– 7040m <sup>2</sup>
Ponds	– 200m <sup>2</sup>
Rough Grassland	– 1000m <sup>2</sup>
Oak Woodland	– 320m <sup>2</sup>
Wet Grassland	– 5000m <sup>2</sup>





Photo: Andy Parnell



Hedgerows	– 4560m <sup>2</sup>
Field Margins	– 6076m <sup>2</sup>
Tree-line	- 415 m <sup>2</sup>
Wild Bird Cover	– 4815m <sup>2</sup>
Skylark Plot	– 7040m <sup>2</sup>
Ponds	– 200m <sup>2</sup>
Rough Grassland	– 1000m <sup>2</sup>
Oak Woodland	– 320m <sup>2</sup>
Wet Grassland	– 5000m <sup>2</sup>

TOTAL BMA - 29,426 m<sup>2</sup>  
- 2.94 ha  
- 11.76%





Hedgerows	– 4560m <sup>2</sup>
Field Margins	– 6076m <sup>2</sup>
Tree-line	– 415 m <sup>2</sup>
Wild Bird Cover	– 4815m <sup>2</sup>
Skylark Plot	– 7040m <sup>2</sup>
Ponds	– 200m <sup>2</sup>
Rough Grassland	– 1000m <sup>2</sup>
Oak Woodland	– 320m <sup>2</sup>
Wet Grassland	– 5000m <sup>2</sup>

TOTAL BMA - 29,426 m<sup>2</sup>  
- 2.94 ha  
- 11.76%

•Bee Scrapes









Hedgerows	– 4560m <sup>2</sup>
Field Margins	– 6076m <sup>2</sup>
Tree-line	– 415 m <sup>2</sup>
Wild Bird Cover	– 4815m <sup>2</sup>
Skylark Plot	– 7040m <sup>2</sup>
Ponds	– 200m <sup>2</sup>
Rough Grassland	– 1000m <sup>2</sup>
Oak Woodland	– 320m <sup>2</sup>
Wet Grassland	– 5000m <sup>2</sup>

TOTAL BMA - 29,426 m<sup>2</sup>  
- 2.94 ha  
- 11.76%

- Bee Scrapes
- Nettle Patches









Hedgerows	– 4560m <sup>2</sup>
Field Margins	– 6076m <sup>2</sup>
Tree-line	– 415 m <sup>2</sup>
Wild Bird Cover	– 4815m <sup>2</sup>
Skylark Plot	– 7040m <sup>2</sup>
Ponds	– 200m <sup>2</sup>
Rough Grassland	– 1000m <sup>2</sup>
Oak Woodland	– 320m <sup>2</sup>
Wet Grassland	– 5000m <sup>2</sup>

TOTAL BMA - 29,426 m<sup>2</sup>  
- 2.94 ha  
- 11.76%

- Bee Scrapes
- Nettle Patches
- Pollinator Plot







Hedgerows – 4560m<sup>2</sup>  
Field Margins – 6076m<sup>2</sup>  
Tree-line – 415 m<sup>2</sup>  
Wild Bird Cover – 4815m<sup>2</sup>  
Skylark Plot – 7040m<sup>2</sup>  
Ponds – 200m<sup>2</sup>  
Rough Grassland – 1000m<sup>2</sup>  
Oak Woodland – 320m<sup>2</sup>  
Wet Grassland – 5000m<sup>2</sup>

TOTAL BMA - 29,426 m<sup>2</sup>  
- 2.94 ha  
- 11.76%

- Bee Scrapes
- Nettle Patches
- Pollinator Plot
- Multi-species Grassland

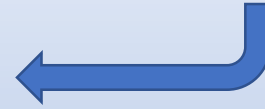








Sprayed Stubble Field



Unsprayed Stubble Field



## Farming with Nature - RBP Score Card

Habitat No. 15

**HEDGEROW (existing)** (Max Score = 100)

Date checked : **Summer**

1. Last Topped		
<1 year	1 - 4 years	5 years +
10	30	60

2. % Gaps (ground level)		
> 70 % gaps	10 - 70 % gaps	<10 % gaps
Autofail	8	20

3. Free from Disturbance	
No	Yes
See below	10

4. Cover of Invasive Species			
> 50%	25 - 50%	10 - 25%	<10%
0	2	5	10

Disturbance	Point Deduction
Pesticide Application	Autofail *
Dumping / Spoil	Autofail
Livestock Access	Autofail

Invasive Species	
Laurel	Japanese Knotweed
Travellers Joy	Snowberry
Bracken	Giant Hogweed
Himalayan Balsalm	

\* Unless under the guidance of an ecologist

[See **BRIDE Project Habitat Management Guidelines** for more detailed information]





## BRIDE PROJECT EIP

### Farming with Nature - RBP Score Card

Habitat No. 22

#### RIPARIAN BUFFER (Bride river) (Max Score = 100)

Date checked : **Annually**

1. % of Buffer 3+ metres			
<30%	30-60%	61-90%	>90%
0	10	30	70

2. Free from Disturbance	
No	Yes
See below	20

3. Cover of Invasive Species (%)			
> 50%	25 - 50%	10 - 25%	<10%
0	2	5	10

Invasive Species
Giant Hogweed
Himalayan Balsalm
Japanese Knotweed
Laurel
Travellers Joy
Bracken

Disturbance	Point Deduction
Livestock Access	Autofail
Farmyard Runoff	Autofail
Pesticide Application	Autofail*
Fertiliser Application	Autofail
Slurry Application	Autofail
Dumping/Spoil	Autofail

\* Unless under the guidance of the ecologist

# FARMLAND BIODIVERSITY INDEX PAYMENT

## BMA QUANTITY

### Baseline BMA

Hedgerow } 0.956 ha = 3.82%

Wet Grassland }

### Added BMA

Field Margin } 1.986 ha = 7.95%

Tree-line }

Wild bird cover }

Skylark Plot }

Pond }

Rough Grassland }

Woodland }

### Current BMA

2.942 ha 11.77%

## BMA QUALITY

Average Quality Score } 79% = B

QUANTITY PAYMENT : €1,471

(at rate of €500 / ha)

QUALITY PAYMENT: €2,300

TARGET SPECIES PAYMENT € 200

TARGET HABITAT PAYMENT € 100

8+ HABITATS PRESENT € 100

TOTAL PAYMENT :

€4,171

FARMLAND BIODIVERSITY INDEX :

12 B





# Biodiversity Desert





# Biodiversity Oasis



# Summary

## Changes that need to happen

- Advice on ecology and sustainability as well as agronomy
- Make environmental discussion positive – opportunity not an obstacle
- Focus on delivering a higher environmental standard of food production with a view to getting a premium.
- Farmers should be paid for delivering environmental benefits such as biodiversity, water quality and carbon storage as well as food production
- Specialist advisors leading the way on making the changes
- Consumer is king – doesn't matter what policy dictates. Market demands ecosystem services
- Going back to advising one on one as well as discussion group model
- NO GREENWASHING! Damage to farmers reputation