

Ballyhaise Agricultural
College 1/07/22
Initiatives undertaken at
Ballyhaise College to
reduce emissions



- College Opened in 1906
- The estate dates back to the Ulster Plantation of the early 1600s
- The current house was built for the Newburghs in the early 1700s by Richard Cassels
- The college was closed for three years around 1916 due to cutbacks

The staff

Principal	Assistant Principal
John Kelly	Marianne Lyons

Teachers/ Technicians	Admin	Farm staff	Domestic
24	4	9	1
9 Teachers and 5 Education Officers		1 Farm Manager	1 Domestic Staff
6 Technicians *		7 Farm Staff 1 Farm Technician	
4 FTE Contractor Teachers	1 technician is half H&S coordinator		

Catering is subcontracted out and run with 3-4 staff



A profile of Farms and learners in the region

CSO 2010	No. of Farmers	Dairy Farmers	Sheep Farmers	% of farmers from each county	Current L5 students by county	% L5 students from each county	L5 students - Dairy	L5 students - sheep
National	140k							
Cavan	5.3k	688	712	12%	39	32%	12	11
Donegal	9.2k	225	5,042	22%	18	15%	2	11
Monaghan	4.6k	722	357	11%	20	16%	7	4
Sligo	4.4k	178	1,346	10%	2	2%	0	1
Leitrim	3.7k	50	851	9%	4	3%	0	0
Louth	1.7k	169	344	4%	11	9%	2	3
Longford	2.6k	155	389	6%	4	3%	0	1
Westmeath	3.5k	291	760	8%	7	6%	0	3
Dublin	0.8	37	85	2%	1	1%	1	0
Kildare	2.6k	176	601	6%	0	0%	0	0
Meath	4.6k	594	971	11%	17	14%	5	4
Total/Avg for region	43k	3285	11458	100%	123	100%	29	38
	30.63%	8%	27%				24%	31%

- 146 Ha (360ac) of grass, 57 Ha of Forest
- 35 Suckler cows spring calving suckler herd finishing all progeny
- 200 ewes, 80 early and 120 main season
- 120 dairy cows run as a research farm



The Farm



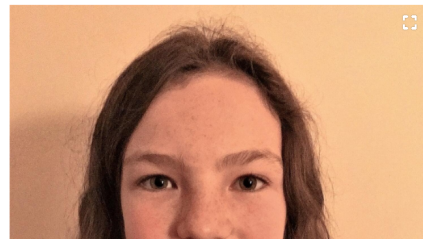


The Anglo-Celt

Home News Sport Entertainment Farming Gallery Marketplace ePaper Newspaper Archive Contact Us Search



Published: Fri 15 Nov 2019, 7:47 AM



Yasmin Peeters (12).

Children of the revolution

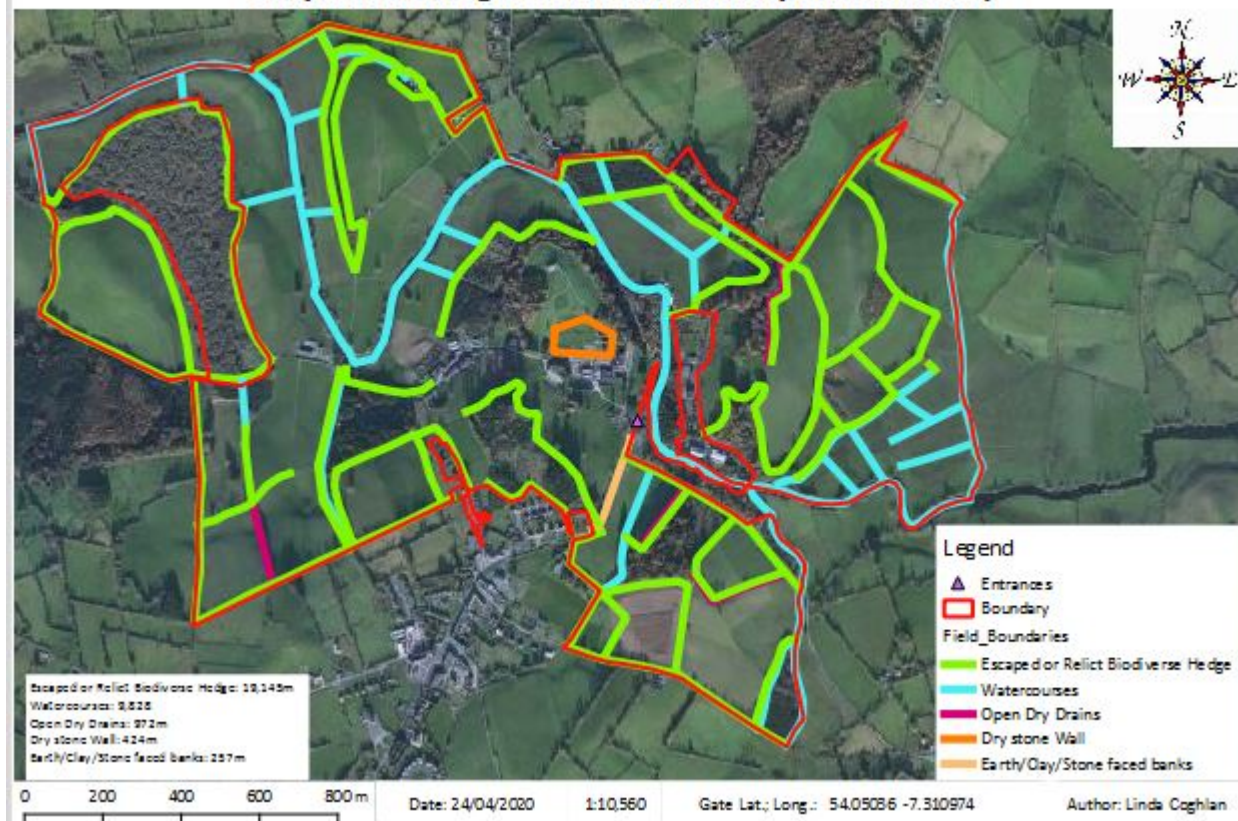
Two young people from County Cavan will be among the delegates to the first ever Youth Assembly on Climate at Dáil Éireann today (Friday). Yasmin Peeters and Conor Gannon have been selected to represent their peers at the Assembly as concern over climate change and green issues intensifies on a global scale. Reporter Thomas Lyons caught up with them ahead of their big day...

- The college has an ASSAP advisor based in the advisory office
- From the onset the college and farm manager have taken an active part in the Local Authority Waters Programme (LAWPRO)
- Part of the college land is the Annalee Priority Action Area (PAA)

Slide show 1

Grass Ha	153
Conifer Ha	15.26
Broadleaf Ha	17.44
Mixed Broadleaf/Conifer Ha	11
Agroforestry Ha	0.67
Scrub Ha	2.28
Lakes or Ponds Ha	6.86
Wild meadow grass – unfarmed Ha	2
Water courses and open drains	10km
Escaped or Relict Biodiverse Hedge	18.5km

Ballyhaise College Linear Biodiversity Features Map



Slide show 2

- The college farm is a signpost farm
- One of the college teachers is co-ordinating this
 - Early work was to allocate responsibility to the people best placed on the college to carry out actions under 4 categories, Farm & catchment, Water Quality, Gaseous Emissions and Biodiversity
- College accounts are being analysed
- Sustainability planner completed with agreed actions
- Use the college as a resource for communicating the solutions to our student and farmers
- Our college pasture development will be covered on the 8th of July 2022 in this series



Slide show 3

- Thanks
- Don't forget our open day Wednesday the 13th of July