

OAD Milking Conference 2021

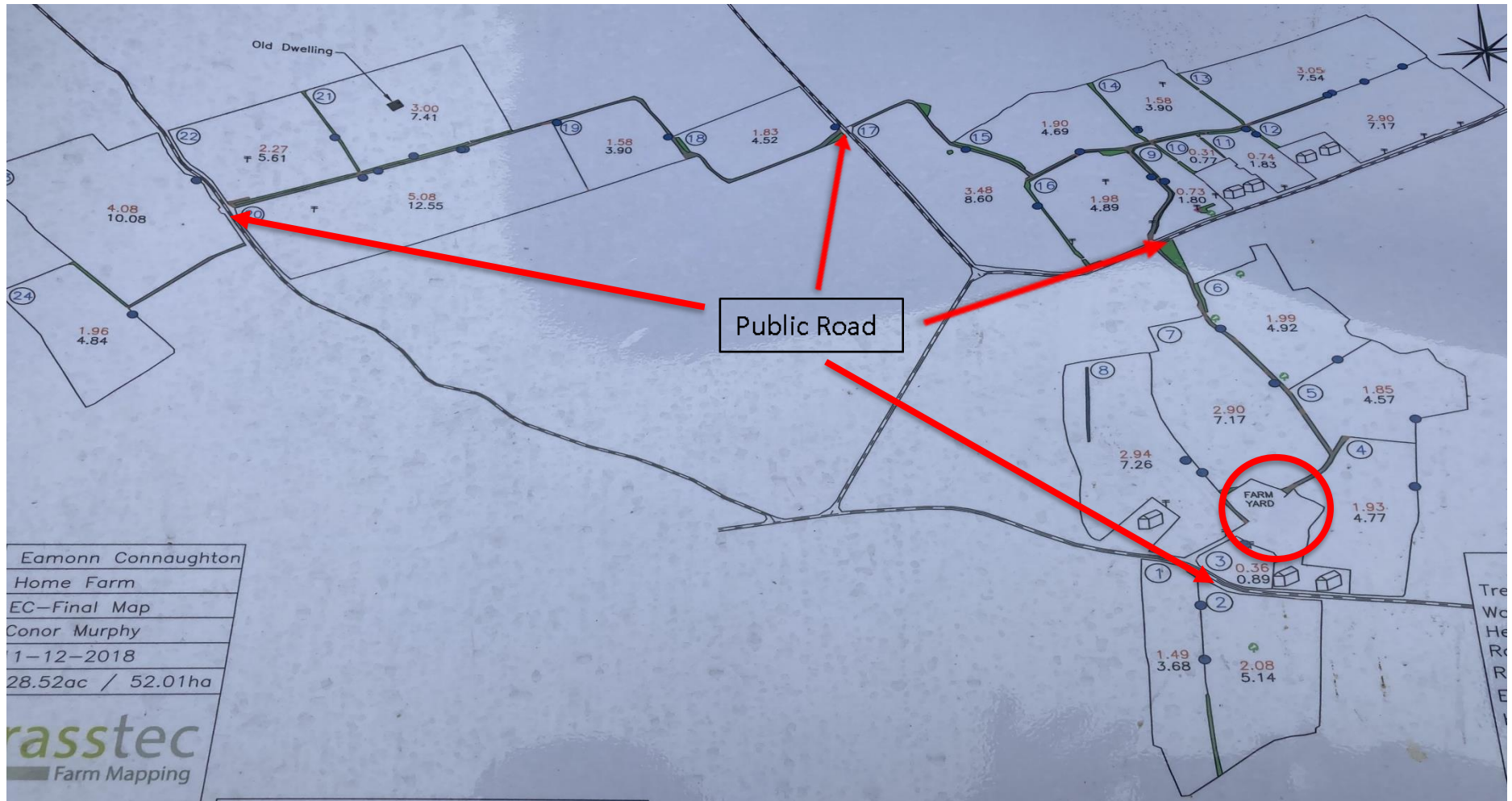
Is a high margin achievable?

*Eamonn Connaughton
Carracloough
Loughrea
Co Galway*

Intro & Farm Background

- 2012 - 2017 : Herd grew from 110 cows to 160 cows over the period
- 2018: Decision to go fulltime OAD
 - Loss of leased land beside parlour (22 Ha)
- Farming 54 hectares of land (Whole Farm SR 2.6)
- Fragmented farm with 2.5 kms walking distance to furthest paddocks
- 140 spring calving cows – (High EBI FR & JEX - €161)
- Contract rearing of heifers –cow only dairy farm
- 14 unit herringbone, 140 cubicles and adequate slurry storage on farm

Farm Layout



Cow Performance

	2017 (TAD)	2018 (1 st Yr OAD)	2019	2020	2021
Milk Yield (L)	5303	4233	4251	4298	4390
Protein (%)	3.79	3.86	4.02	4.05	4.00
Fat (%)	4.53	4.71	4.93	5.00	5.04
Milk Solids (kg)	454	374	392	404	410
Somatic Cell Count (SCC)	136,000	133,000	162,000	171,000	178,000
Calving Interval (days)	371	378	364	368	367
6 wk calving (%)	87	78	81	80	84

Financial Performance – E-Profit Monitor

		2017 (TAD)	2018	2019	2020	DG Av 2020
Gross output	Per Ha	€4309	€5014	€4683	€4577	€3887
	Per Cow	€2102	€1726	€1781	€1755	€2122
Variable Costs / cow		€681	€759	€655	€701	€801
Fixed Costs / cow		€468	€357	€364	€361	€653
Net Margin	Per Cow	€954	€609	€761	€702	€618
	Per Ha	€1955	€1770	€2081	€1847	€1241

Summary

- Business Decision – utilising the whole farm
- Can be highly profitable – focus on the profit drivers
 - Grass utilised per Ha
 - Excellent cow performance
 - Excellent cost control
- Lifestyle Benefits - flexible working hours
- ***“Time rather than labour”***