



An Roinn Talmhaíochta,
Bia agus Mara
Department of Agriculture,
Food and the Marine

TAMS Specifications

Dr Robert Leonard & Michael O'Donoghue

15th April 2025

Introduction



- Brief overview of specifications
- S.101
- S.123
- Explanatory Notes on Costings
- Website

S101 - Minimum Specification for the Structure of Agricultural Buildings



- Outlines minimum requirement for Tams grant aided farm buildings
- Other structural designs outside scope of S101 – report to be submitted from chartered engineer, submitted to Department for prior approval
- The contractor must be certified to EN 1090-1, even in cases where the steel frame is manufactured on site
- Where the building is being grant-aided, and the applicant manufactures the steel frame themselves, then the applicant shall submit up-to-date certificates of welding competence in accordance with EN ISO 9606-1:2013.

Building Types



- ***Simple Steel Frame – A2***
- ***Lean-To Structure – A3***
- **Steel Frame with Steel Truss Roof – A4**
- ***Steel Portal Frame – A5***
- **Simple Timber Frame – A6**
- **Timber Portal Frame – A7**
- **Traditional Solid Wall with Timber Roof – A8**
- **Concrete Framed Structure – A9**
- **Steel Hooped Structure – A10**

S.101: Overground buildings



- Covers full building requirements
- Wide range of building design options
- Design to 4.8m or 6.4m bays – most cost effective.
- Grafting to existing buildings
 - *Stanchion to be suitable for both buildings*
 - *Need to provide details of exiting building*
- Stanchion elimination
 - *Design is for simple steel frames up to 9.15m span, 4.8m bay and 3.0m eave*
 - *Portal frames always require engineers report.*

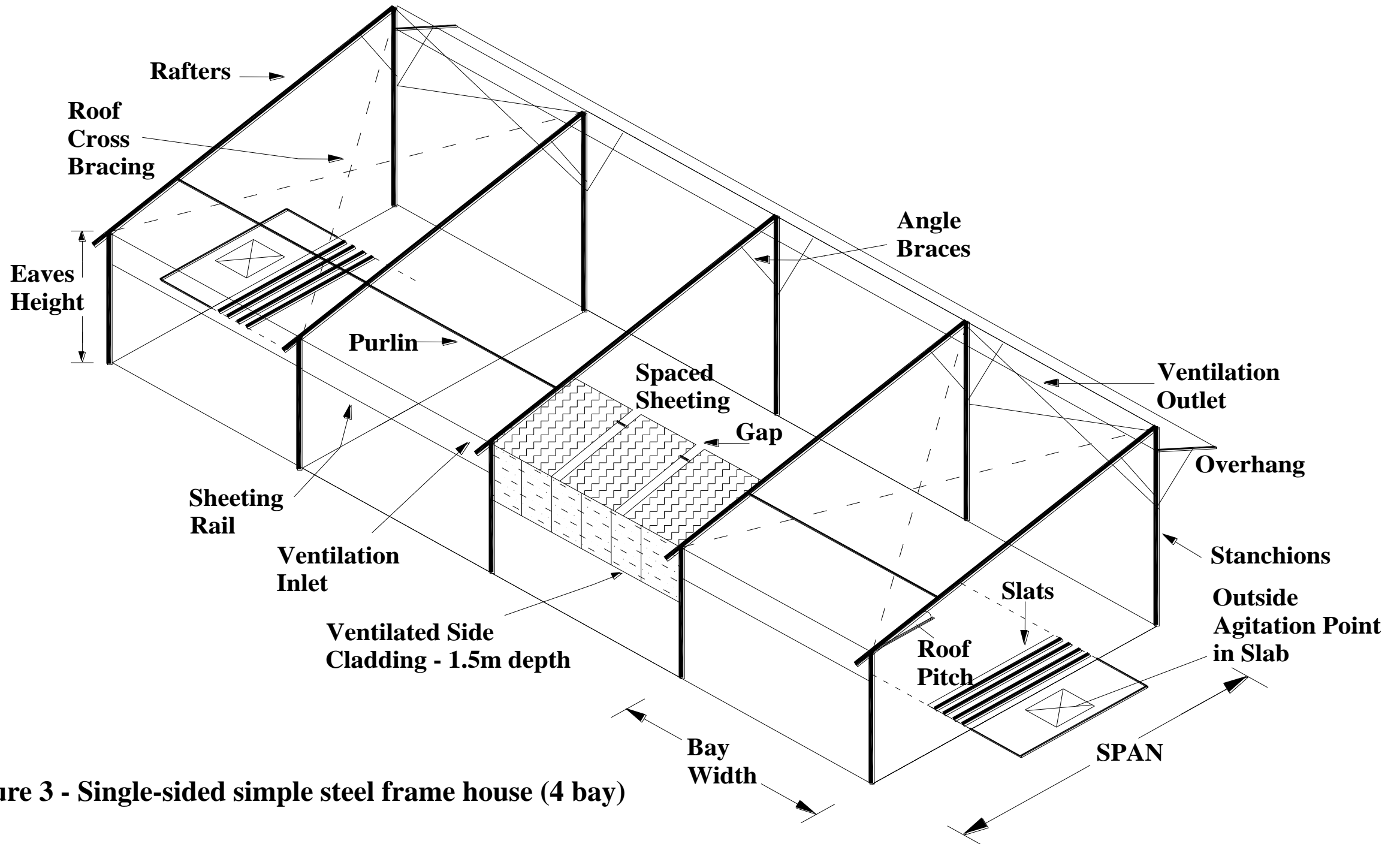


Figure 3 - Single-sided simple steel frame house (4 bay)

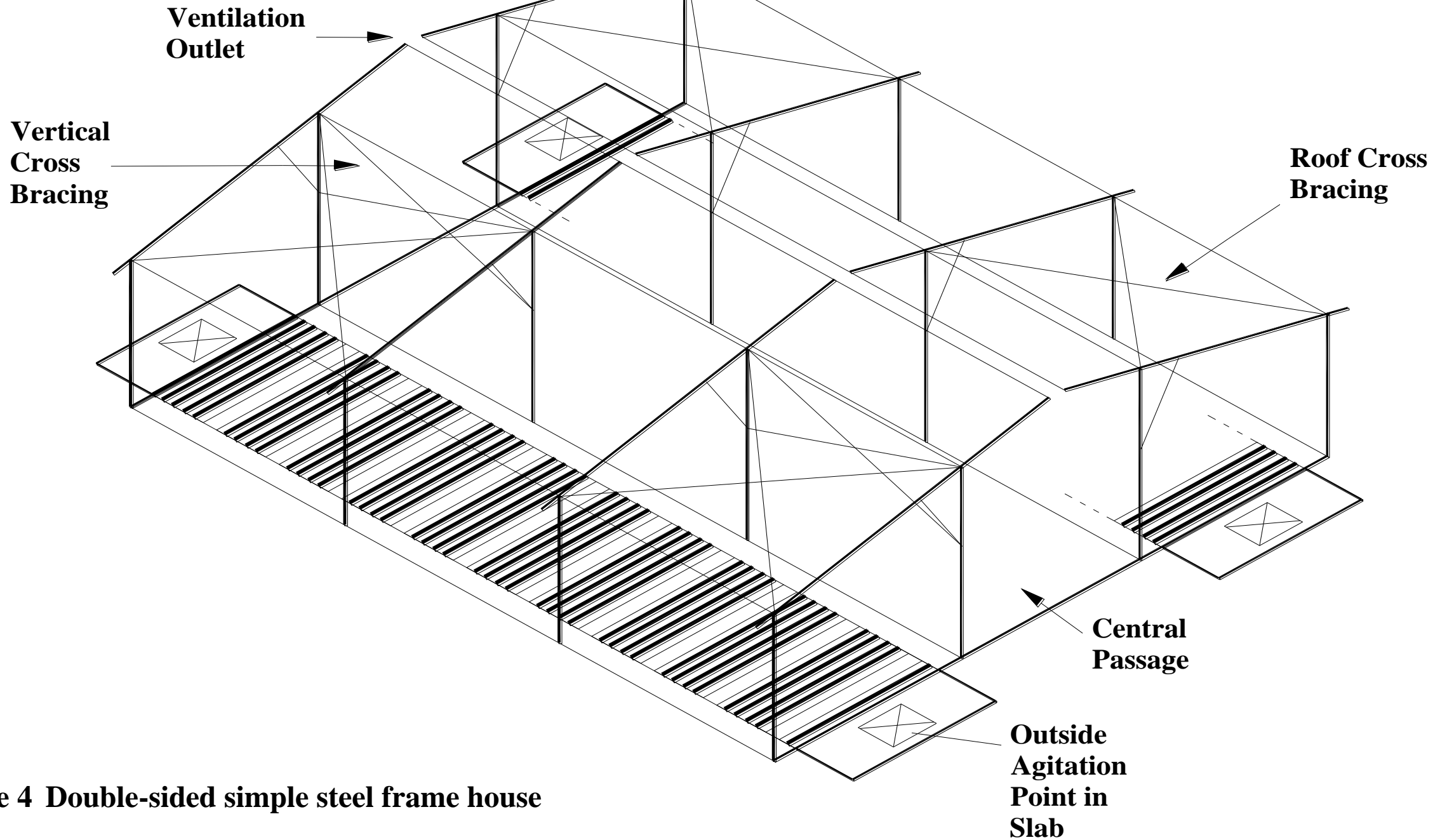


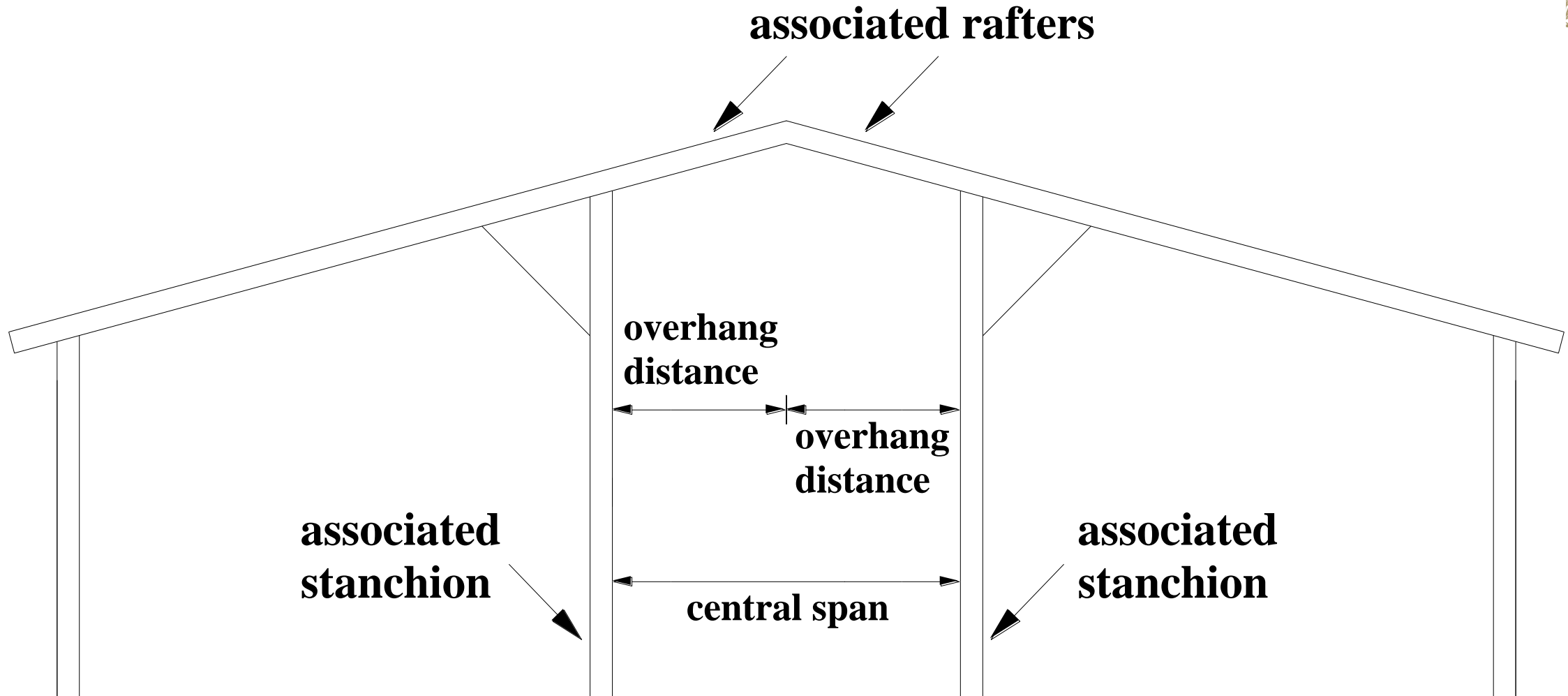
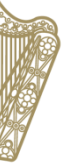
Figure 4 Double-sided simple steel frame house

S.101: Overground buildings - 1



- Stanchion sizes – ensure correct for eave height
- Offset Apex – may need to design to portal frame
 - *Both overhangs are 3.5m or less, simple steel frame sizing*
 - *One or both overhangs is greater than 3.5m and both less than 4.0m, simple steel frame sizing applies, but knee and apex braces as in steel portal frames shall be incorporated*
 - *One or both overhangs is greater than 4.0m, then full portal frame specification applies*

S.101: Overground buildings - 2



S.101: Overground buildings - 3



- Internal agitation points must be removed
 - *Common airspace with other buildings*
- Ventilation –
 - *Ensure gap over vented sheeting at sides for buildings over 15m wide*
 - *Ensure outlet ventilation is correct size*
 - *Do not impede ventilation of existing buildings*
- Purlin sizing
 - *Timber purlins – up to 4.8m*
 - *Steel purlins must be pre-painted and listed on S.102*

Concrete for all structures



- Concrete – either 37N or 45N – legal minimum requirement regardless of grant-aid for slurry and effluent stores.
- Always from a plant certified to EN 206
- Required strength important for durability.
- Cement Content and Water Cement Ratio are important

S123 - Minimum Specification for Bovine Livestock Units and Reinforced Tanks



- Bovine housing layout
 - Loose, slatted, suckler and cubicle houses
- Tank layout
- Space at agitation points and tank lengths
- Required reinforcing levels
- Floor and wall thickness
- Tank covers (slabs and slats)

S.123: Bovine building layout and tank design

- 1



- Access to pens not through other pens
- Cubicle cross-over points
 - *2.3m wide minimum*
 - *3.5m wide if drinker present- clear space.*
- Cubicle bed dimensions
 - *2.1m head-to-head, 2.4m recommended*
 - *2.4m long against wall, recommend 2.6m*
 - *1.15m wide (c/c dividers)*
- Precast cubicle beds
 - *Must be on Accepted Slat List*
 - *On HD slats or slabs only, or self supporting*

S.123: Bovine building layout and tank design

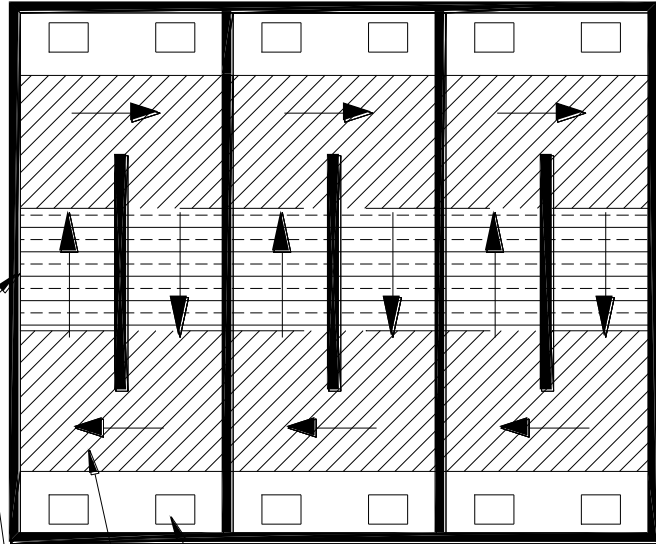
- 2



- All internal agitation points must be removed
- All Buildings shall be designed so that there is good air-flow around agitation points
- Sufficient space at agitation points
 - *9 metres between gables*
 - *6 metres at sides*
 - *6 metres gable to side*
 - *9 metres from agitation point to at least one wall when three sides*
- Avoid common air-space with building with internal agitation points

"A"

Shaded area = Roofed area



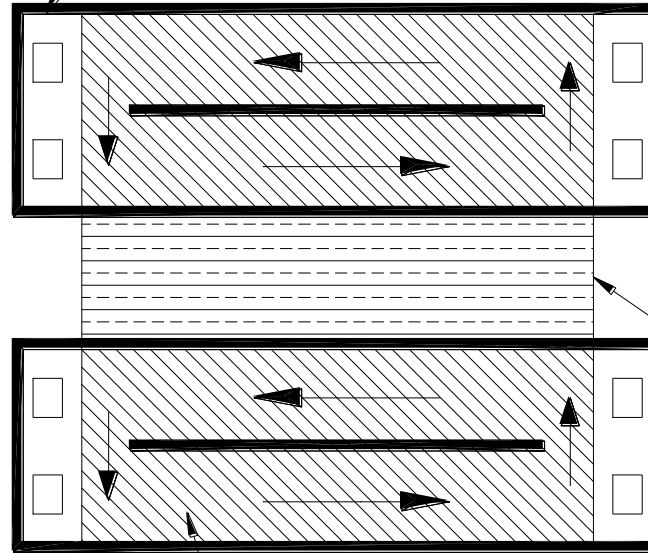
Agitation Points

Animal Area

Suspended central passage

"B"

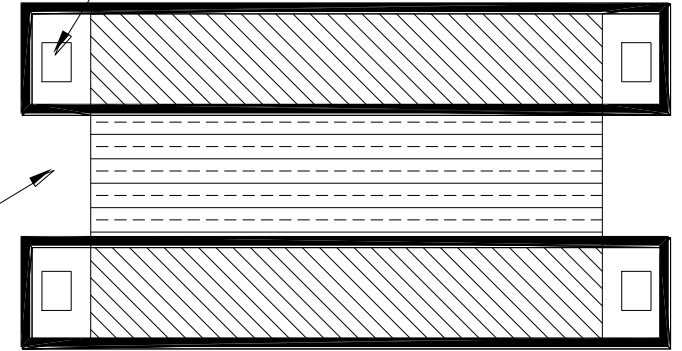
Agitation Points



Animal Area

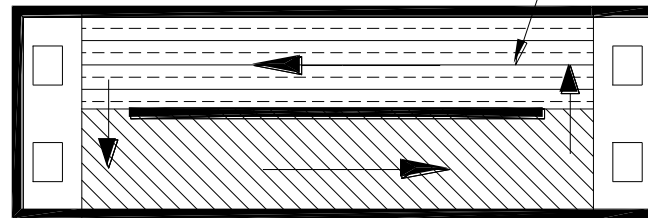
"C"

Agitation Points



Central passage

Suspended central passage



S.123: Bovine building layout and tank design

- 4



- Agitation points both ends:
 - *Type “A” & Type “B” tanks shall not be longer than 42m*
 - *Type “C” tanks shall not be longer than 32m*
- Agitation points at one end only:
 - *Type A & B tanks: shall not exceed 25.5m in length*
 - *Type C tanks: shall not exceed 16m in length*
- Pipe Agitation system:
 - *Tank length up to 37m for single agitation point*
 - *Tank length up to 61m for two agitation points*
- Aeration System:
 - *Tank length up to 75m*
 - *Extraction points every 50m*

S.123: Bovine building layout and tank design - 3



- Foundations under stanchions always brought down to firm strata
- Foundations outside tank walls to be of mass concrete – never use blocks.
- Wall thickness
 - *Minimum 225 mm for outer walls.*
 - *Minimum 300 mm for spine walls*
 - *Minimum 400mm for stanchion (outer wall), 500mm for spine wall.*
- Additional reinforcing required under stanchions on tank walls.
- Stanchions on beams – beam must be specifically designed

Engineers Reports for S.101 and S.123



- Can enable any design to be used.
- Must be agreed by DAFM prior to work being undertaken.
- Must be completed by a Chartered Engineer.
- Must provide detail of works and calculations.
- Required for all pillar and beam spine walls.
- Required if eave height above 5m.

11 Schemes Under TAMS 3



- AWNSS – Animal Welfare Scheme
- WFCIS – Women Farmers Scheme
- YFCIS – Young Farmers Scheme
- OCIS – Organics Scheme
- TCIS – Tillage Scheme
- PPIS – Pig and Poultry Scheme
- DES – Dairy Equipment Scheme
- FSS – Farm Safety Scheme
- LESS – Low Emission Slurry Spreading Scheme
- SCIS – Solar Scheme
- NISS – Nutrient Importation Storage Scheme

Drawing Quality



- Drawings must be clear and to scale.
 - *Neighbouring buildings should be shown*
- All relevant dimensions must be shown
 - *Required dimensions given in T&Cs*
 - *Plan and elevations required*
- All agitation points must be shown
 - *External and Internal*
- Farmyard plan must be clear and to scale

Explanatory Notes on Costings



- These are essential for completing an application or claim.
- These give the required measurement points and units for each investment.
- Every investment is covered by the Explanatory Notes on Costings.
- Investments divided into groups of similar type investments.
- Failure to follow will delay approvals and payments, and may lead to penalties.

TAMS 3 T&C's

gov.ie - Targeted Agriculture Modernisation Schemes (TAMS)
(www.gov.ie)



- [TAMS 3 Statistics](#)
- [TAMS 3 List of Eligible Items](#)
- [Tams 3 Support documents](#)
- [Solar Capital Investment Scheme](#)
- [Animal Welfare and Nutrient Storage Scheme](#)
- [Dairy Equipment Scheme](#)
- [Farm Safety Capital Investment Scheme](#)
- [Low Emission Slurry Spreading Scheme](#)
- [Nutrient Importation Storage Scheme](#)
- [Organic Capital Investment Scheme](#)
- [Pig and Poultry Investment Scheme](#)
- [Tillage Capital Investment Scheme](#)
- [Women Farmer Capital Investment Scheme](#)
- [Young Farmer Capital investment Scheme](#)

TAMS 3



[gov.ie](http://www.gov.ie) - Tams 3 Support documents (www.gov.ie)

Tams 3 Support Documents

From [Department of Agriculture, Food and the Marine](#)

Published on 28 March 2023

Last updated on 26 February 2025

1. [Explanatory Notes](#)
2. [Reference Costs](#)
3. [Equation Calculation Spreadsheet](#)
4. [Tanks Costings Spreadsheet for Tams 3](#)
5. [Tanks Costings Spreadsheet for Pig Houses under Tams 3](#)
6. [FAS Advisor Presentation - Spring 2024](#)
7. [Process for both Geotagging and Uploading Photographs](#)
8. [User Manual for TAMS 3](#)
9. [TAMS 3 Frequently Asked Questions](#)

General Issues



- Consult website
- Updates in specifications are highlighted in red
- List of when updates occurred at top of specification page
- Specifications are updated regularly.
- The list of relevant specifications are given on the Approval letter and must be followed.

TAMS Specifications

gov.ie - TAMS - Farm Building and Structures Specifications (www.gov.ie)



TAMS - Farm Building and Structures Specifications

From [Department of Agriculture, Food and the Marine](#)

Published on 6 November 2020

Last updated on 6 March 2025

1. [Planning & Development Regulations 2001](#)
2. [Health and Safety Guide for Construction Works](#)
3. [Listing of Dates of when Specifications were Updated](#)
4. [Structures Specifications](#)

gov.ie - TAMS - Farm Building and Structures Specifications

https://www.gov.ie/en/collection/65f5b-tams-farm-building-and-structures-specifications/

gov.ie - TAMS gov.ie - Department... SSO Login Google eZone NSSO - NSSO edocs eRisks - My risks eSubmissions - My... Other favourites

PDF

S100 Concrete Specification - October 2015

This specification sets out the minimum concrete specification for use in agricultural structures.

[Download](#)
[View](#)

PDF

S101: Minimum Specifications for the structure of Agricultural Buildings - July 2016

This specification gives the full structural details of all of the recommended types of agricultural buildings.

[Download](#)
[View](#)

PDF

S101A Non Load Bearing Wall Panels for use in Cattle and Sheep Houses - May 2019

This list details all the companies that are accepted as producing pre-cast wall panels that are eligible for use as non-load bearing walls in cattle and sheep house that are being grant-aided.

[Download](#)
[View](#)



General



- Read the Specifications
- Get to know the specifications
- Consult the specifications



**An Roinn Talmhaíochta,
Bia agus Mara**
Department of Agriculture,
Food and the Marine

**Thank you for your
attention.**