

Table of Contents

1. Important Note to all NMP Users: - Clear your cache today!.....	2
2. Milking Platform Introduction	2
3. Creating Milking Platform	2
4. How to deal with Milking Platform Conflicts.	5
5. Milking platform Pop up Explanation	6
6. Milking platform override panel	7
7. Delete or Reposition Milking Platform Pin.....	7
8. Map Viewer Milking Platform Layer	8

1. Important Note to all NMP Users: - **Clear your cache today!**

CTRL+F5 for desktop or FN+F5 for laptops and if there are still issues do a full Clear Cache (delete browsing history all time) [How to Clear your Cache](#)

2. Milking Platform Introduction

The 'Milking Platform Measure' under the 6th Nitrates Action Programme (GAP Regulations, S.I. 588 of 2025) balances nutrient distribution on fragmented intensive farms. Irish research shows that over-concentrating dairy cow manure and slurry near the milking parlour elevates nitrogen levels, significantly increasing the risk of nutrients runoff into water.

Please see Link to most recent NMP update [Information in Bulletin 55](#)

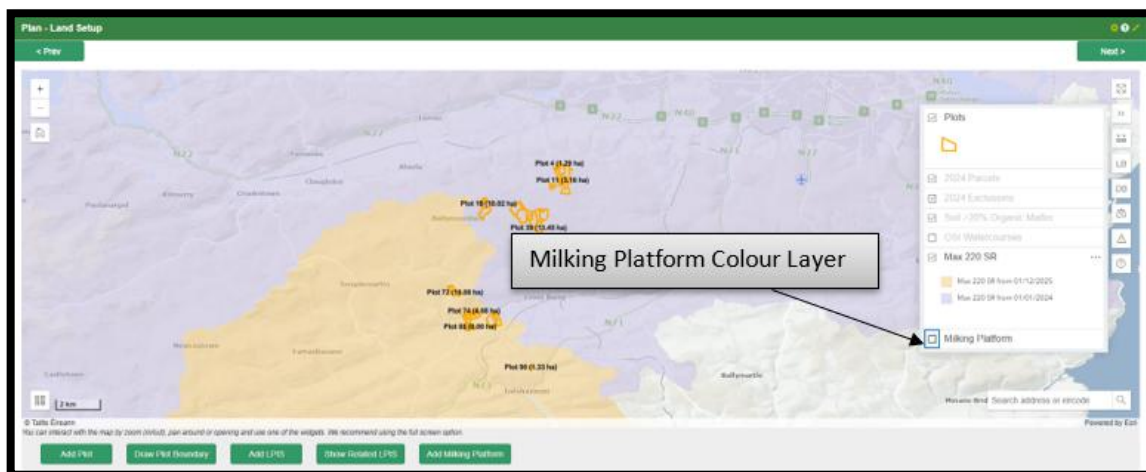
Please see link to DAFMs Frequently asked questions. [FAQ on Nitrates Milking Platform Measure 27042026](#)

Please see link to GAP Regulations, S.I. 588 of 2025. [Gap Regulations, S.I No. 588/2025](#)

3. Creating Milking Platform

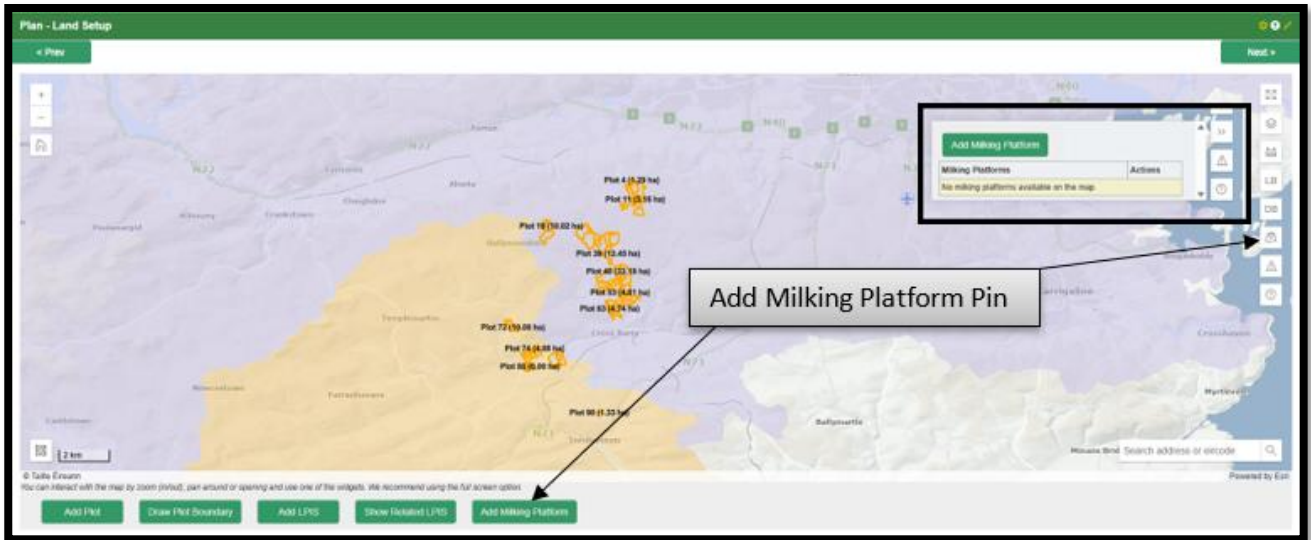
To create a milking platform, you first need to turn on the milking platform layer in land setup using the layer setting as this layer is defaulted off. If this step is skipped, you will not see the milking platform layer on the map when the pin is dropped.

Note: As the milking platform layer is defaulted off you will have to turn it on any time you want to see the layer in Land setup.

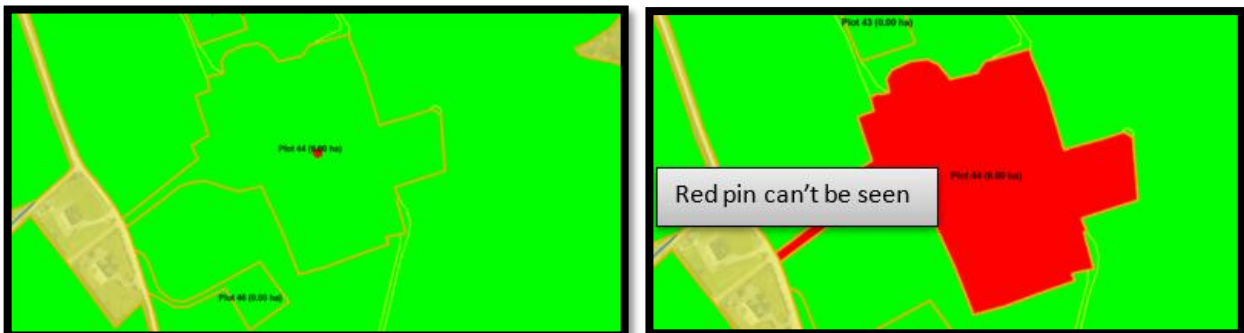


Once the layer is turned on you can add a pin by selecting add milking platform, there are two options to do this shown in the screenshot below.

If you have already added a milking platform pin you don't have to add it a second time unless there is a second milking platform in your plan.

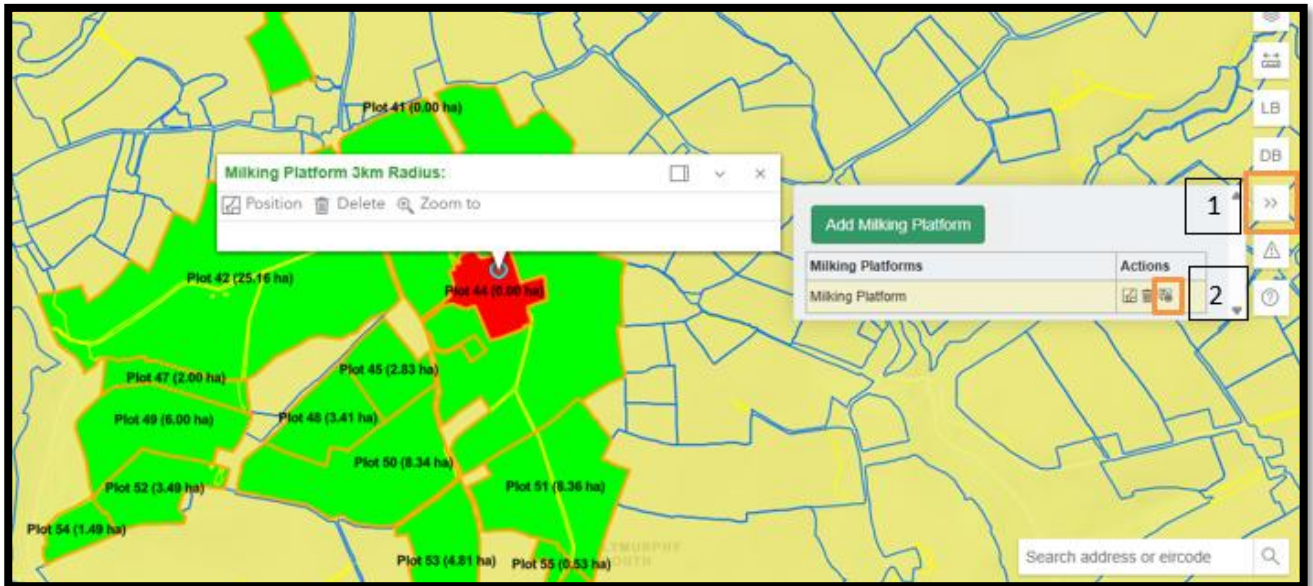


When selecting pin location, it is important that the pin is in the centre of the LPIS parcel and not over the milking parlour. (It is important to select the middle of the LPIS parcel and not the centre of the Plot in NMP as these may be different) As only plots in grassland are eligible you may have the change a farm yard plot in attributes to grazing while dropping a pin in order to see its location as once the colour layer is on the pin and layer clash and you won't see the pin. If you do this remember to change the plot use once happy with pin location.

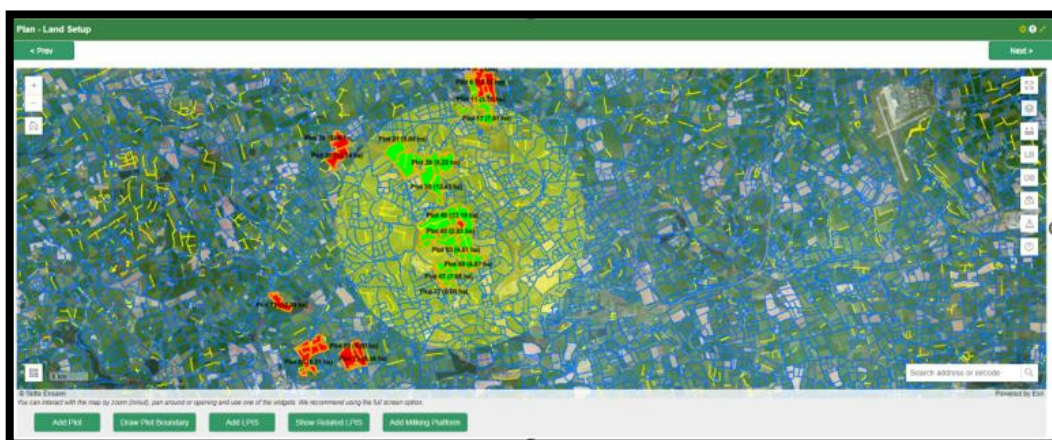
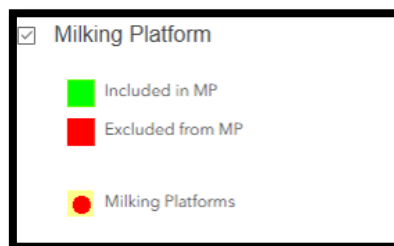


Another way to see where the location is to:

1. Click on Milking Platform Button
2. Click on Show detail for this Milking Platform



Once the milking platform pin is dropped you will see in green and red which Plots are eligible and ineligible. There is a yellow circle drawn which outlines the 3k m milking platform area. You will See legend below:

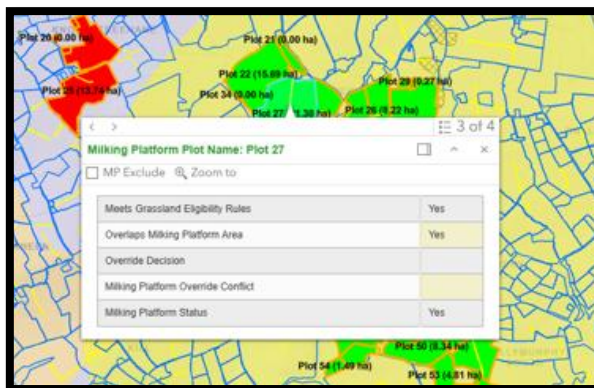


All parcels that intersect the yellow circle will be turned green if eligible under the milking platform rules. Commonage, farms yard/roads and tillage parcels are excluded from the Milking platform automatically and will show red.



4. How to deal with Milking Platform Conflicts.

A farmer may want to include or exclude NMP plots from the milking platform which they can do by clicking on the parcel using the arrows to move to the Milking Platform Page and selecting MP Include or MP Exclude depending on what needs to be done.



Reasons why a farmer may want to include or exclude parcels for the milking platform

- Land just outside the circle may be a part of a LPIS parcel inside the circle and would be eligible to be included in the milking platform.

- There may be land within the circle not used as part of the milking platform that a farmer wants to exclude.



5. Milking platform Pop up Explanation

By clicking on the plot use the arrows to move to the Milking Platform Page.

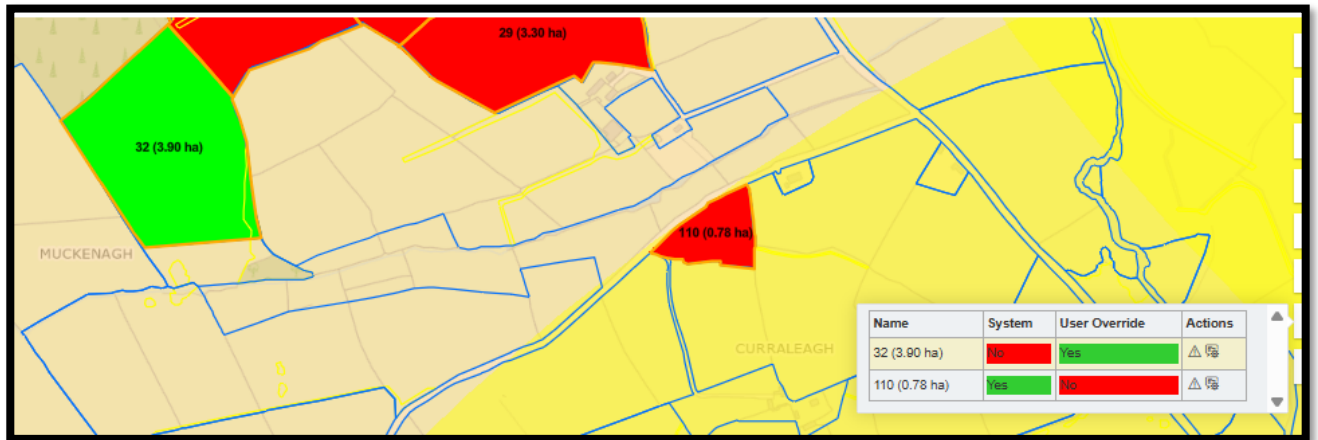
- Meets Grassland Eligibility – Is this a Grassland Plot
- Overlaps Milking Platform Area – Does this land intersect the 3 km circle
- Override decision – What has the parcel been changed to
- Milking Platform override Conflict - What has the parcel been changed to
- Milking Platform Status – What is this plots Milking platform status after the above rules



6. Milking platform override panel

The override / conflict panel is the last check to make sure any changes you have made in the milking platform layer is correct.

- System means what NMP recommends for this plan.
- User Override means what the user has change the parcel too with regards to the milking platform.



7. Delete or Reposition Milking Platform Pin

As can be seen in screen shot below there are two ways to change milking platform pin position or delete milking platform pin. You can get access to these buttons by clicking on the pin and selecting the Milking



platform 3km radius page or selecting this icon on the right-hand side of land setup page.

